



Awarded 'A' Grade by APSCHE, ISO 9001-2008 certified Institute  
(Approved by AICTE and Affiliated to JNTUK - Kakinada)  
Chirala, Prakasam District, Andhra Pradesh, India. Pin – 523157

## Student Satisfaction Survey - Analysis Report

Academic Year: **2021-2022**

Purpose of Survey: **Students Satisfaction Levels on Overall Institutional Performance**

Total Count of Students (All Years Including UG and PG): **749**

Count of Students filled Survey Form: **593**

Students Filled Survey Form Percentage: **79.1722%**

Dates of Survey: **02-05-2022 to 05-05-2022.**

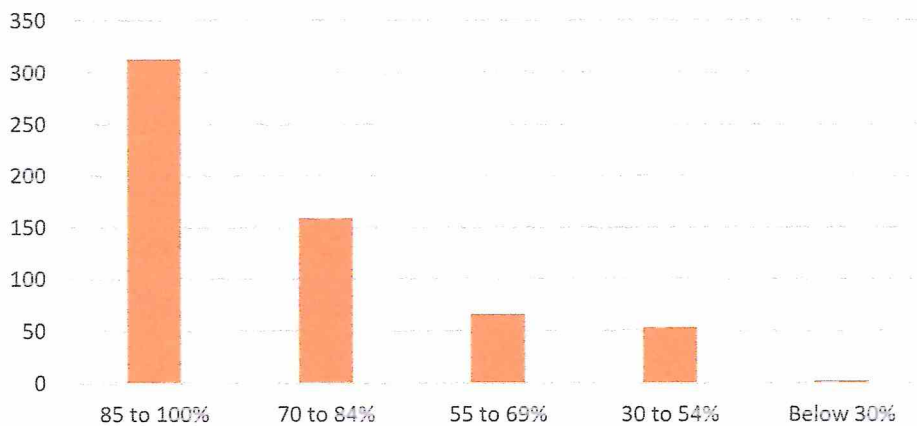
Data Collected Link:

<https://docs.google.com/spreadsheets/d/167XeQAefTRzDp3z2D01FNThI5EHKfljd/edit?usp=sharing&ouid=109810309536423957845&rtpof=true&sd=true>

### Survey Report for each Questionnaire:

1. How much of the syllabus was covered in the class?

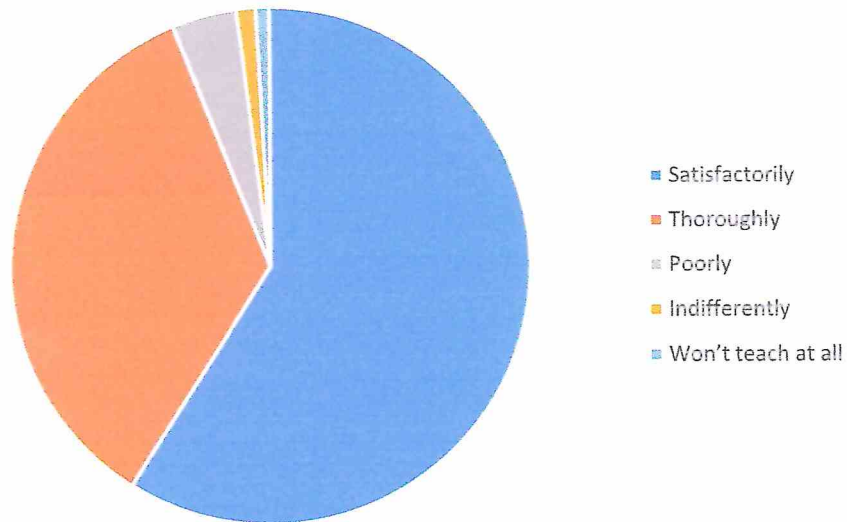
- 4 – 85 to 100%
- 3 – 70 to 84%
- 2 – 55 to 69%
- 1 – 30 to 54%
- 0 – Below 30%



$$\frac{\text{Each Option Responses}}{\text{Total No. of Responses}} = \frac{(4 * 313) + (3 * 159) + (2 * 66) + (1 * 53) + (0 * 2)}{593} = 3.227655$$

2. How well did the teachers prepare for the classes?

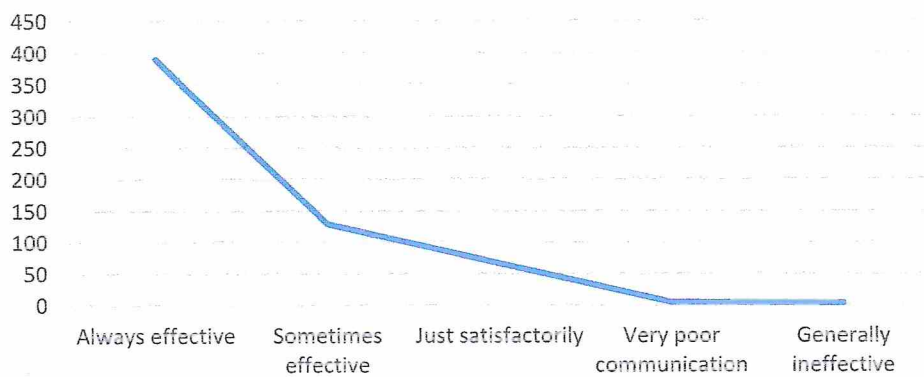
- 4 – Thoroughly
- 3 – Satisfactorily
- 2 – Poorly
- 1 – Indifferently
- 0 – Won't teach at all



$$\frac{\text{Each Option Responses}}{\text{Total No. of Responses}} = \frac{(4 * 350) + (3 * 207) + (2 * 24) + (1 * 7) + (0 * 5)}{593} = 3.500843$$

3. How well were the teachers able to communicate?

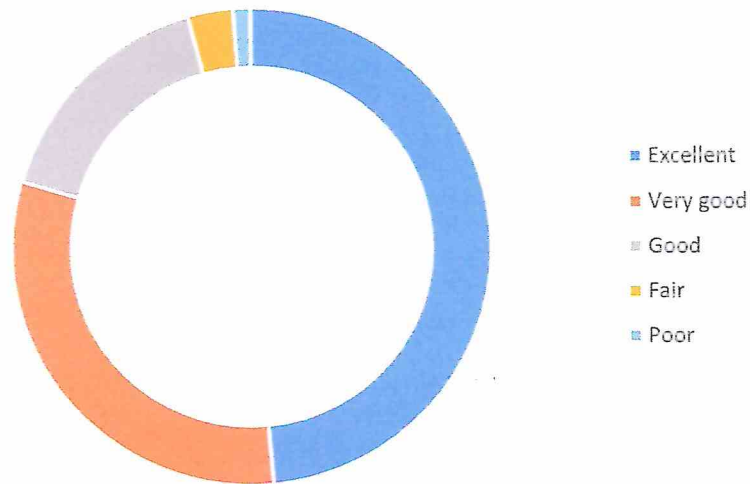
- 4 – Always effective
- 3 – Sometimes effective
- 2 – Just satisfactorily
- 1 – Generally ineffective
- 0 – Very poor communication



$$\frac{\text{Each Option Responses}}{\text{Total No. of Responses}} = \frac{(4 * 390) + (3 * 129) + (2 * 67) + (1 * 4) + (0 * 3)}{593} = 3.516020$$

4. The teacher's approach to teaching can best be described as

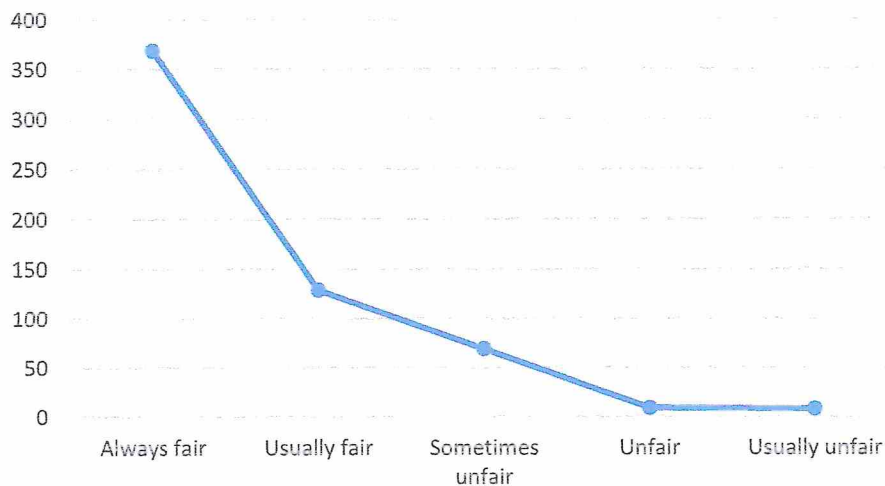
- 4 – Excellent
- 3 – Very good
- 2 – Good
- 1 – Fair
- 0 – Poor



$$\frac{\text{Each Option Responses}}{\text{Total No. of Responses}} = \frac{(4 * 288) + (3 * 184) + (2 * 96) + (1 * 18) + (0 * 7)}{593} = 3.227655$$

5. Fairness of the internal evaluation process by the teachers.

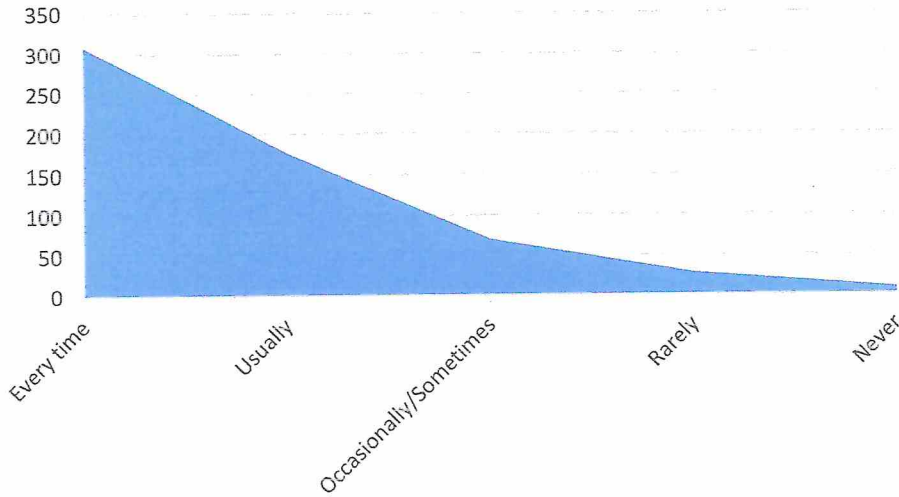
- 4 – Always fair
- 3 – Usually fair
- 2 – Sometimes unfair
- 1 – Usually unfair
- 0 – Unfair



$$\frac{\text{Each Option Responses}}{\text{Total No. of Responses}} = \frac{(4 * 378) + (3 * 129) + (2 * 69) + (1 * 9) + (0 * 8)}{593} = 3.450252$$

6. Was your performance in assignments discussed with you?

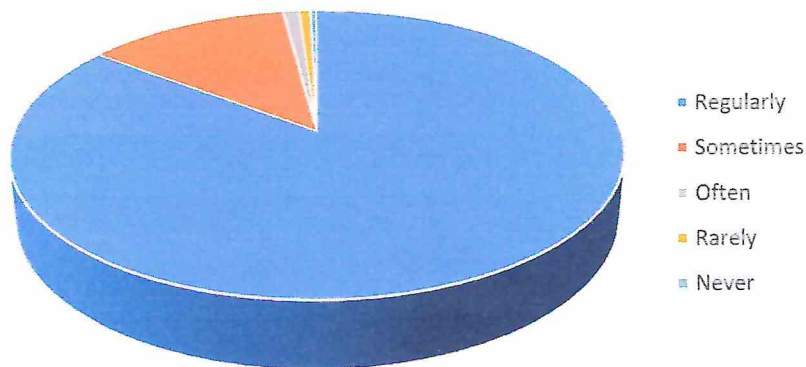
- 4 – Every time
- 3 – Usually
- 2 – Occasionally/Sometimes
- 1 – Rarely
- 0 – Never



$$\frac{\text{Each Option Responses}}{\text{Total No. of Responses}} = \frac{(4 * 309) + (3 * 177) + (2 * 70) + (1 * 28) + (0 * 9)}{593} = 3.263069$$

7. The institute takes active interest in promoting internship, student exchange, field visit opportunities for students.

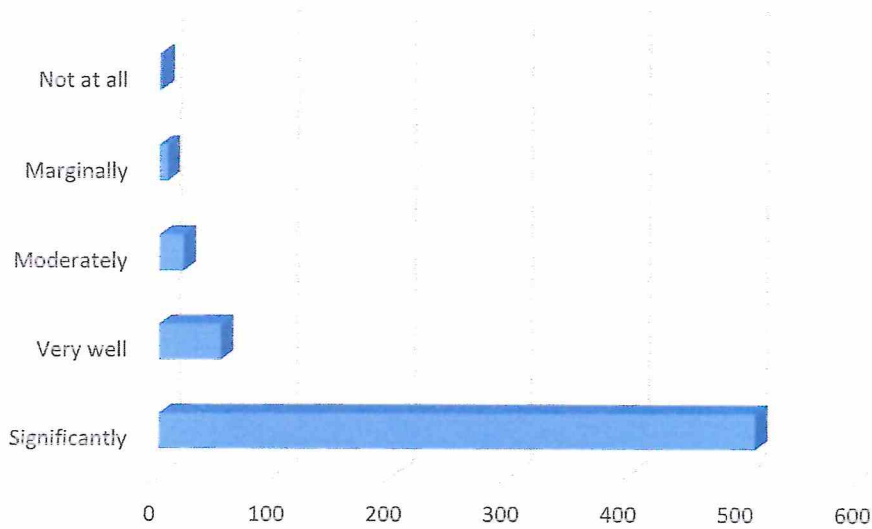
- 4 – Regularly
- 3 – Often
- 2 – Sometimes
- 1 – Rarely
- 0 – Never



$$\frac{\text{Each Option Responses}}{\text{Total No. of Responses}} = \frac{(4 * 507) + (3 * 74) + (2 * 6) + (1 * 4) + (0 * 2)}{593} = 3.821247$$

8. The teaching and mentoring process in your institution facilitates you in cognitive, social, and emotional growth.

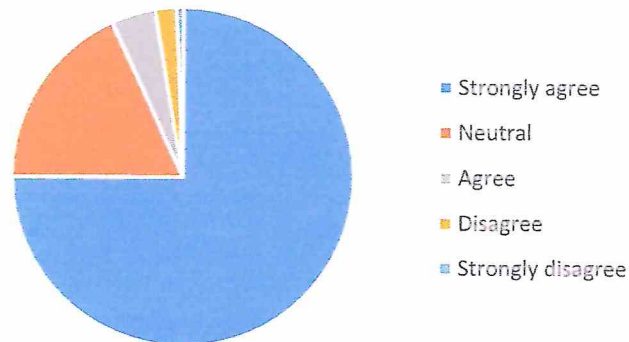
- 4 – Significantly
- 3 – Very well
- 2 – Moderately
- 1 – Marginally
- 0 – Not at all



$$\frac{\text{Each Option Responses}}{\text{Total No. of Responses}} = \frac{(4 * 509) + (3 * 54) + (2 * 21) + (1 * 7) + (0 * 2)}{593} = 3.789207$$

9. The institution provides multiple opportunities to learn and grow.

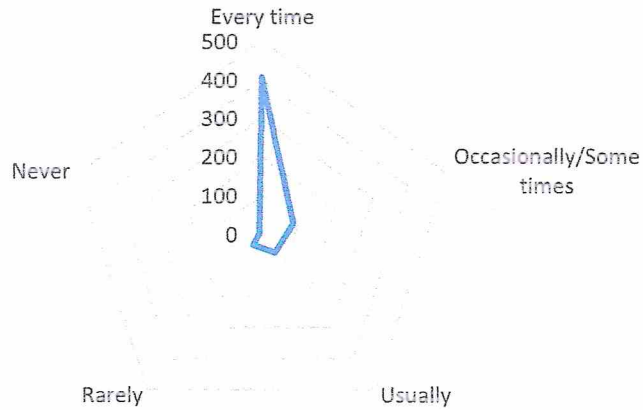
- 4 – Strongly agree
- 3 – Agree
- 2 – Neutral
- 1 – Disagree
- 0 – Strongly disagree



$$\frac{\text{Each Option Responses}}{\text{Total No. of Responses}} = \frac{(4 * 444) + (3 * 25) + (2 * 107) + (1 * 12) + (0 * 4)}{593} = 3.502529$$

10. Teachers inform you about your expected competencies, course outcomes and programme outcomes.

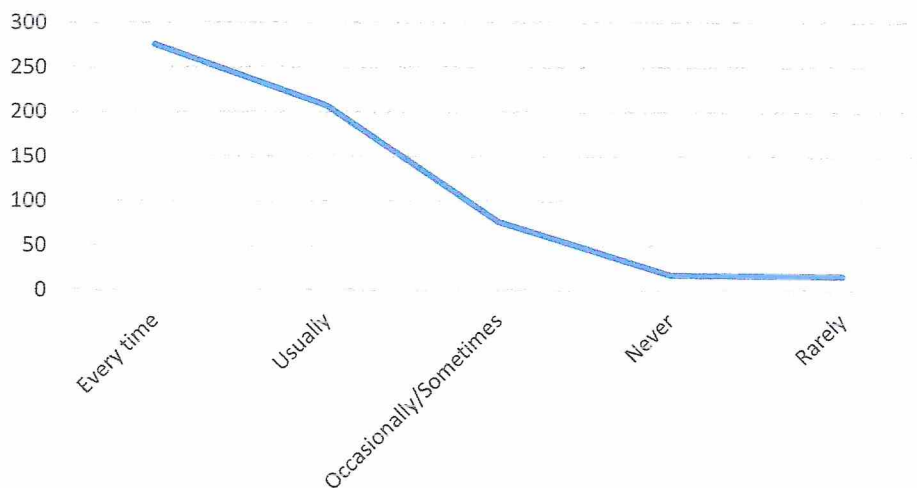
- 4 – Every time
- 3 – Usually
- 2 – Occasionally/Sometimes
- 1 – Rarely
- 0 – Never



$$\frac{\text{Each Option Responses}}{\text{Total No. of Responses}} = \frac{(4 * 406) + (3 * 59) + (2 * 86) + (1 * 36) + (0 * 6)}{593} = 3.387858$$

11. Your mentor does a necessary follow-up with an assigned task to you.

- 4 – Every time
- 3 – Usually
- 2 – Occasionally/Sometimes
- 1 – Rarely
- 0 – I don't have a mentor

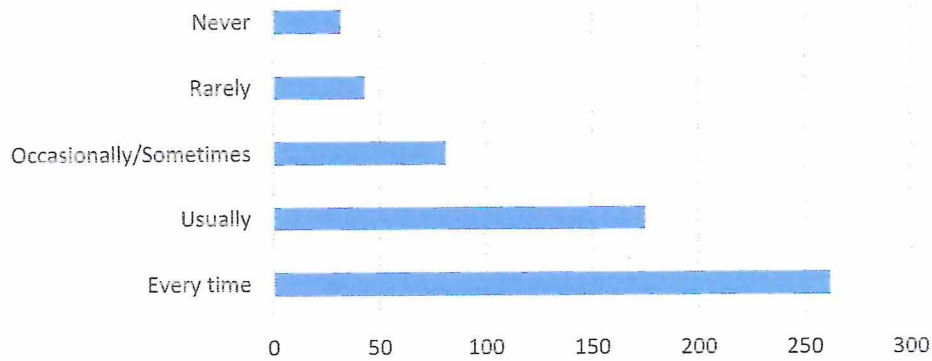


$$\frac{\text{Each Option Responses}}{\text{Total No. of Responses}} = \frac{(4 * 276) + (3 * 207) + (2 * 77) + (1 * 16) + (0 * 17)}{593} = 3.195615$$



12. The teachers illustrate the concepts through examples and applications.

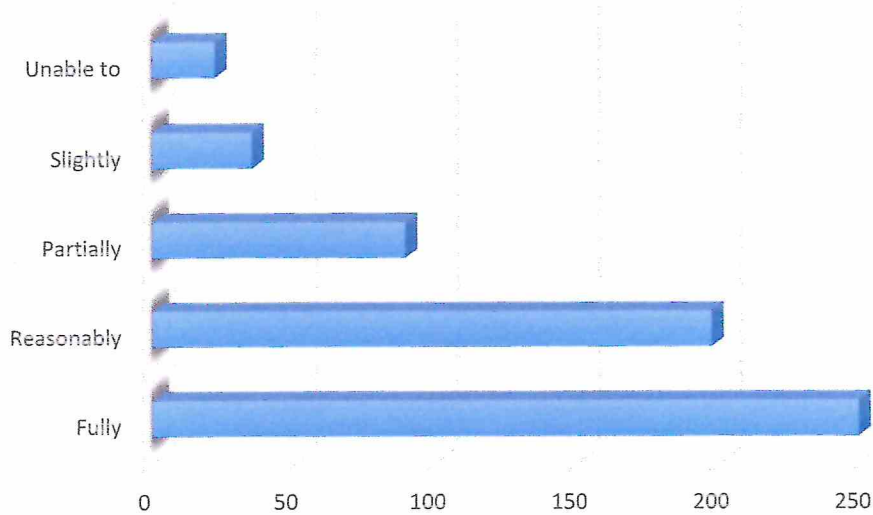
- 4 – Every time
- 3 – Usually
- 2 – Occasionally/Sometimes
- 1 – Rarely
- 0 – Never



$$\frac{\text{Each Option Responses}}{\text{Total No. of Responses}} = \frac{(4 * 262) + (3 * 170) + (2 * 79) + (1 * 41) + (0 * 32)}{593} = 2.962900$$

13. The teachers identify your strengths and encourage you with providing right level of challenges.

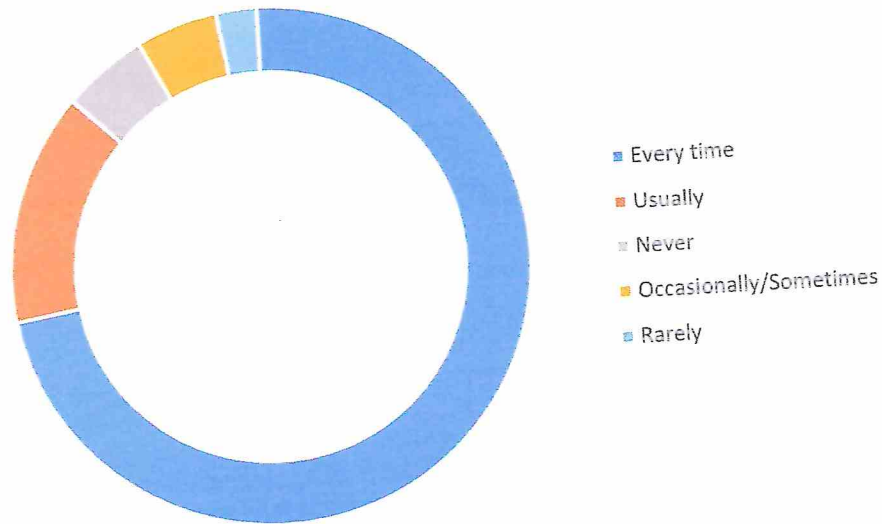
- 4 – Fully
- 3 – Reasonably
- 2 – Partially
- 1 – Slightly
- 0 – Unable to



$$\frac{\text{Each Option Responses}}{\text{Total No. of Responses}} = \frac{(4 * 249) + (3 * 198) + (2 * 89) + (1 * 35) + (0 * 22)}{593} = 3.040472$$

14. Teachers are able to identify your weaknesses and help you to overcome them.

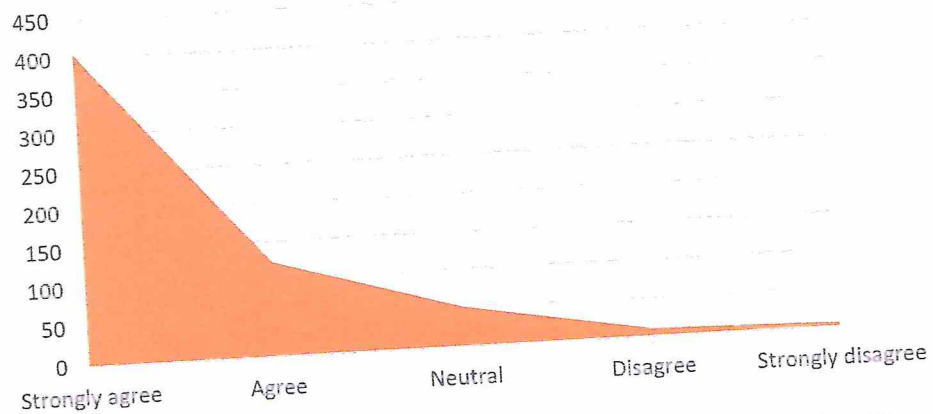
- 4 – Every time
- 3 – Usually
- 2 – Occasionally/Sometimes
- 1 – Rarely
- 0 – Never



$$\frac{\text{Each Option Responses}}{\text{Total No. of Responses}} = \frac{(4 * 430) + (3 * 86) + (2 * 32) + (1 * 30) + (0 * 15)}{593} = 3.494097$$

15. The institution makes effort to engage students in the monitoring, review and continuous quality improvement of the teaching learning process.

- 4 – Strongly agree
- 3 – Agree
- 2 – Neutral
- 1 – Disagree
- 0 – Strongly disagree

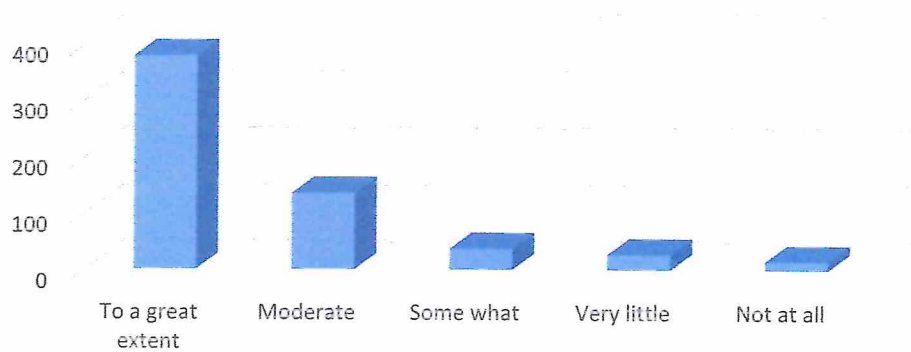


$$\frac{\text{Each Option Responses}}{\text{Total No. of Responses}} = \frac{(4 * 405) + (3 * 122) + (2 * 51) + (1 * 10) + (0 * 5)}{593} = 3.537942$$



16. The institute/ teachers use student centric methods, such as experiential learning, participative learning and problem-solving methodologies for enhancing learning experiences.

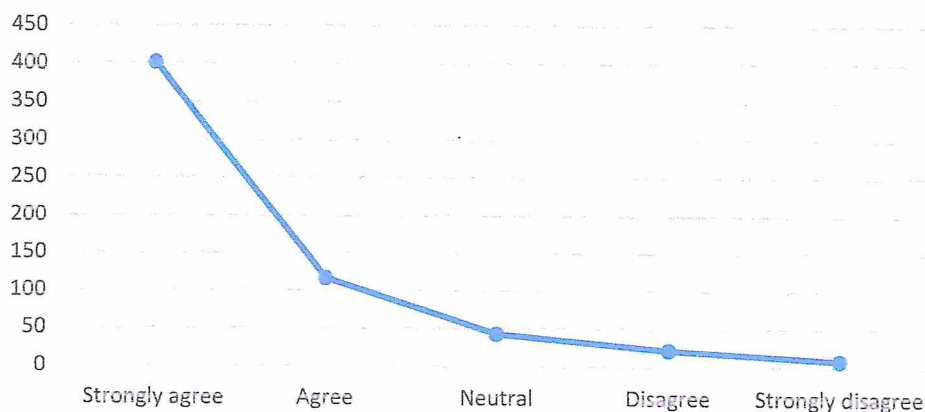
- 4 – To a great extent
- 3 – Moderate
- 2 – Some what
- 1 – Very little
- 0 – Not at all



$$\frac{\text{Each Option Responses}}{\text{Total No. of Responses}} = \frac{(4 * 378) + (3 * 136) + (2 * 37) + (1 * 27) + (0 * 15)}{593} = 3.408094$$

17. Teachers encourage you to participate in extracurricular activities.

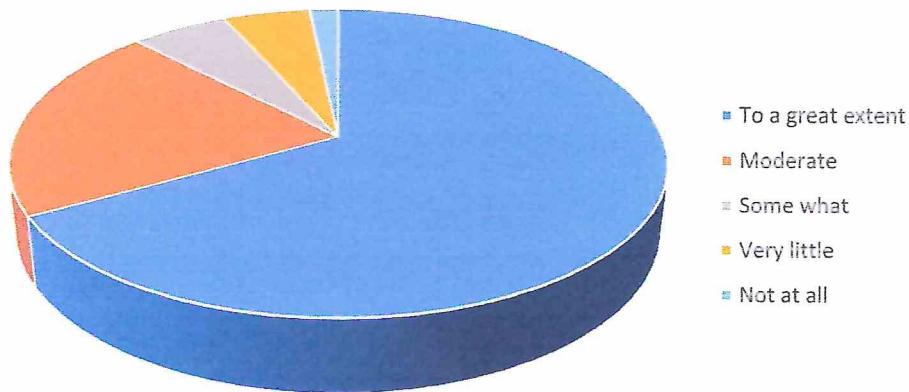
- 4 – Strongly agree
- 3 – Agree
- 2 – Neutral
- 1 – Disagree
- 0 – Strongly disagree



$$\frac{\text{Each Option Responses}}{\text{Total No. of Responses}} = \frac{(4 * 402) + (3 * 117) + (2 * 43) + (1 * 22) + (0 * 9)}{593} = 3.488566$$

18. Efforts are made by the institute/ teachers to inculcate soft skills, life skills and employability skills to make you ready for the world of work.

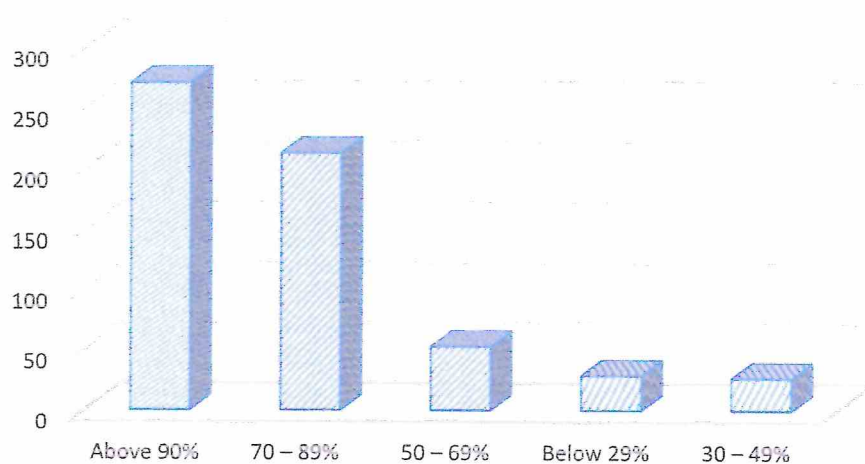
- 4 – To a great extent
- 3 – Moderate
- 2 – Some what
- 1 – Very little
- 0 – Not at all



$$\frac{\text{Each Option Responses}}{\text{Total No. of Responses}} = \frac{(4 * 396) + (3 * 123) + (2 * 34) + (1 * 30) + (0 * 10)}{593} = 3.458684$$

19. What percentage of teachers use ICT tools such as LCD projector, Multimedia, etc. while teaching.

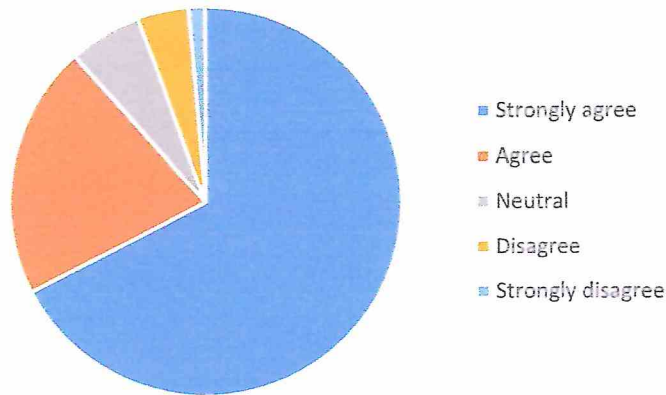
- 4 – Above 90%
- 3 – 70 – 89%
- 2 – 50 – 69%
- 1 – 30 – 49%
- 0 – Below 29%



$$\frac{\text{Each Option Responses}}{\text{Total No. of Responses}} = \frac{(4 * 271) + (3 * 213) + (2 * 53) + (1 * 27) + (0 * 29)}{593} = 3.129848$$

20. The overall quality of teaching-learning process in your institute is very good.

- 4 – Strongly agree
- 3 – Agree
- 2 – Neutral
- 1 – Disagree
- 0 – Strongly disagree



$$\frac{\text{Each Option Responses}}{\text{Total No. of Responses}} = \frac{(4 * 400) + (3 * 124) + (2 * 36) + (1 * 25) + (0 * 8)}{593} = 3.489038$$

21. Give three observation / suggestions to improve the overall teaching – learning experience in your institution.

- a) Use ICT Tools.
- b) Need Extra Curricular Activities.
- c) Nice.

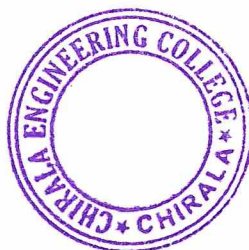
**Overall Rating:**


$$\text{Average} = \frac{3.394579}{4} = 84.865\%$$

**Necessary Actions to be Taken:**

- Suggested Every Department to Conduct Extra Curricular Activities Such as Quiz, Debates, JAMs, Paper Presentations, etc., Frequently.
- Suggested Faculty to use Advanced ICT Tools.

  
IQAC



  
PRINCIPAL  
PRINCIPAL  
CHIRALA ENGINEERING COLLEGE  
CHIRALA