



Guidelines for Identifying Advanced Learners (Bright Students) and Slow Learners

Slow learner and advanced learners are identified for each subject separately by respective subject teacher for all the semesters, based on the performance in Mid-1 Examinations. Process to identify of slow learners and advanced learners be conducted immediately after the first mid examinations.

Identification of Slow learners:

- Students are identified as slow learners, if they got <60% of marks.
- Every subject teacher conducts the remedial classes for the identified slow learners.
- After conduction of the remedial classes, slow learners performance will be reviewed based upon the marks in mid-2 examinations.

Identification of Advanced learners:

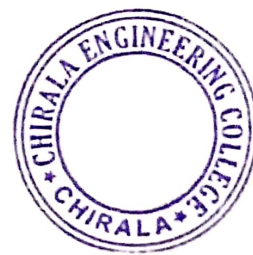
- Students who got more than 60% of marks in MID-I examination are considered as advanced learners.
- Advanced learners are encouraged to participate in Paper Presentations, Quiz, Seminars, Hackathons, Online Certification Courses, etc.

Every subject teacher conducts the remedial classes for the identified slow learners.

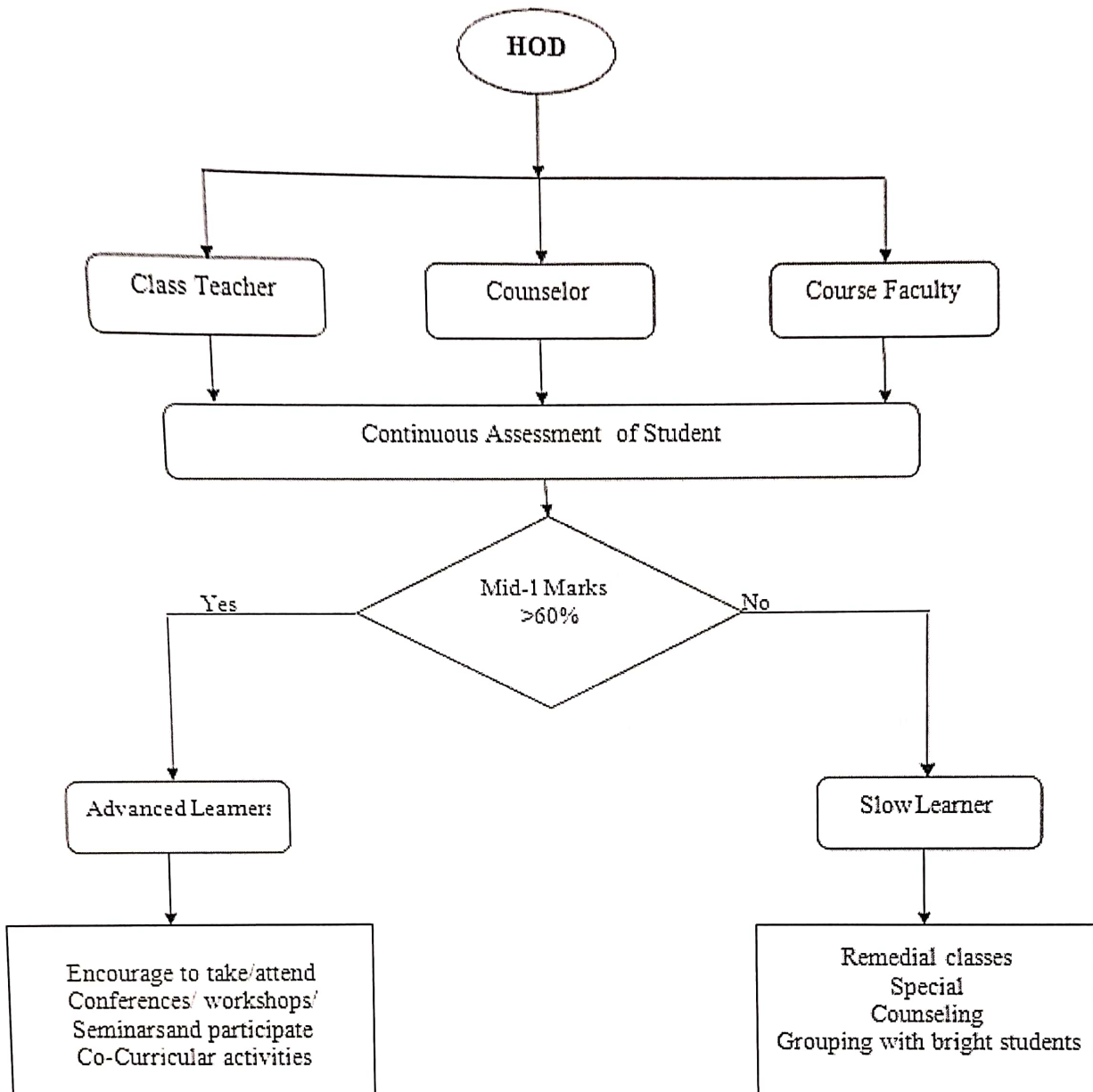
Guidelines for identifying Advanced Learners (bright students)

Following Special activities are conducted for Advanced Learners:

- i) Guiding for career planning.
- ii) Providing placement activities.
- iii) Discussion or seminar on the advanced topics
- iv) Taking up competitive exam training programs.
- v) Guiding the students for GATE/Competitive Examinations.
- vi) Encouraging to participate in various symposiums like quiz, poster presentation, Conferences, inter institution competition etc.



Identification Process of Slow and Advanced Learners

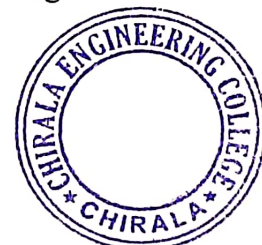


➤ Guidelines identifying for slow learner (Weak Students):

- Slow learners are identified based on their performance in University Examination of previous semester and internal examinations.

➤ Measures taken for improving academic performance of these students

- (i) Remedial/Extra classes are conducted with appropriate focus on the subject/topic Codes in which the students are found to be slow learners
- (ii) Individual academic counseling is done by concerned subject teacher.
- (iii) Students study groups are formed for peer-to-peer learning.



(iv) Personal counseling is done through mentoring (Teacher guardian) scheme which takes care of the student's mentors maintain the entire academic record of the student which is also conveyed to the parent's time to time by the teacher guardian. Slow learners are counseled and motivated by the mentors.

➤ **Roles and Responsibilities of Subject Teacher:**

Subject Teacher is responsible for carrying out different aspects of slow learner and advanced learner identification and activities to be conducted

➤ **Subject Teachers will be responsible for:**

- Conducting class test on unit 1 of 10 marks and duration of one hour.
- Evaluation of class test answer sheets and preparing the class test result report of class
- Preparing and maintaining report for whole class based on parameter decided for assessment of the learning levels of the students with their weightage.
- Preparing separate list of slow and advanced learners
- Preparing schedule for extra sessions /problem solving sessions / revision sessions for slow learners.
- Conducting the sessions for slow learners as per prepared schedule.
- Maintaining the attendance of slow learners' sessions.
- Preparing the list of advanced assignment or list of tasks assigned to advanced learners.
- Preparing the report after university result declaration of current semester which shows the improvement in performance of slow learners to close the loop.
- Maintain all records for slow learners and advanced learners' activity

➤ **Expected Outcome**

1. Timely conduction of slow learners' activities.
2. Records based on student progress and observation.
3. Improvement in University Result.




PRINCIPAL

PRINCIPAL
CHIRALA ENGINEERING COLLEGE
CHIRALA