



where professionalism speaks

CHIRALA ENGINEERING COLLEGE

RAMAPURAM BEACH ROAD, CHIRALA, ANDHRA PRADESH - 523157.

Approved by AICTE, Affiliated to JNTUK, Kakinada.

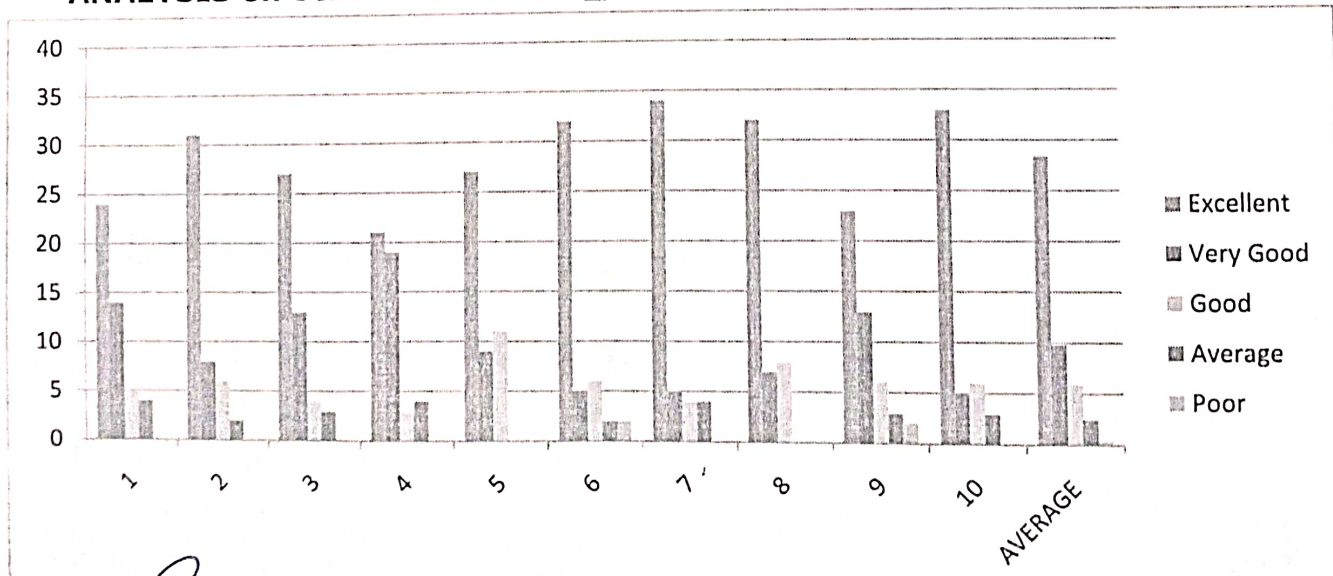
(ISO 9001:2008 Certified Institution)


SUMMARY OF STUDENT'S FEEDBACK FORM ON CURRICULUM (A.Y-2022-2023)

Program Year 2022 - 2023	Year-Semester II-I	Branch ECE	Total No. Of Samples 47
-----------------------------	-----------------------	---------------	----------------------------

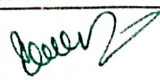
S.NO.	ATTRIBUTES/PARAMETERS	Excellent	Very Good	Good	Average	Poor
1	Rate the syllabus you studied in relation to the competencies required from the courses.	24	14	5	4	
2	The credit allotment for the course is appropriate.	31	8	6	2	
3	The depth of the course content is appropriate in relation to the intended course outcomes (COs).	27	13	4	3	
4	The syllabus's modules are properly ordered.	21	19	3	4	
5	The curriculum helped me increase my abilities to develop, analyze, and solve problems.	27	9	11		
6	Rate the evaluation scheme created for each course.	32	5	6	2	2
7	The course materials are readily available.	34	5	4	4	
8	Calculate the proportion (%) of courses that have lab components.	32	7	8		
9	The laboratory trials improved conceptual knowledge and allowed for the connection of theory to practice (Experiential Learning).	23	13	6	3	2
10	The entire syllabus was completed in the class by the teacher	33	5	6	3	
	AVERAGE	28.4	9.8	5.9	2.5	0.4

ANALYSIS on Student Feedback_ II B.Tech-I Semester AY 2022-2023




 Head of the Department
 Department of E.C
 CHIRALA ENGINEERING COLLEGE
 CHIRALA-523157




 Principal
 PRINCIPAL
 CHIRALA ENGINEERING COLLEGE,
 CHIRALA



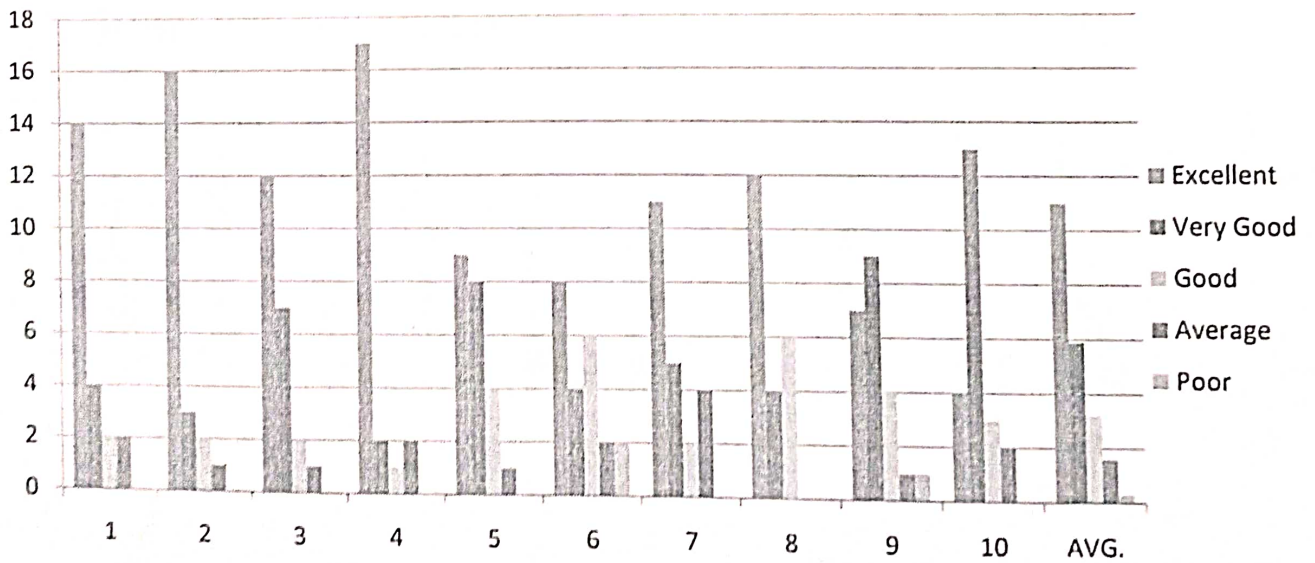
where professionalism speaks

CHIRALA ENGINEERING COLLEGE
 RAMAPURAM BEACH ROAD, CHIRALA, ANDHRA PRADESH - 523157.
 Approved by AICTE, Affiliated to JNTUK, Kakinada.
 (ISO 9001:2008 Certified Institution)

SUMMARY OF STUDENT'S FEEDBACK FORM ON CURRICULUM (A.Y-2022-2023)

Program Year.	Year-Semester	Branch	Total No. Of Samples			
2022 - 2023	III-I	ECE	22			
S.NO.	ATTRIBUTES/PARAMETERS	Excellent	Very Good	Good	Average	Poor
1	Rate the syllabus you studied in relation to the competencies required from the courses.	14	4	2	2	
2	The credit allotment for the course is appropriate.	16	3	2	1	
3	The depth of the course content is appropriate in relation to the intended course outcomes (COs).	12	7	2	1	
4	The syllabus's modules are properly ordered.	17	2	1	2	
5	The curriculum helped me increase my abilities to develop, analyze, and solve problems.	9	8	4	1	
6	Rate the evaluation scheme created for each course.	8	4	6	2	2
7	The course materials are readily available.	11	5	2	4	
8	Calculate the proportion (%) of courses that have lab components.	12	4	6		
9	The laboratory trials improved conceptual knowledge and allowed for the connection of theory to practice (Experiential Learning).	7	9	4	1	1
10	The entire syllabus was completed in the class by the teacher	4	13	3	2	
AVERAGE		11	5.9	3.2	1.6	0.3

ANALYSIS on Student Feedback_ III B.Tech-I Semester AY 2022-2023



Head of the Department
 Department of E.C.I
 CHIRALA ENGINEERING COLLEGE
 CHIRALA-523157



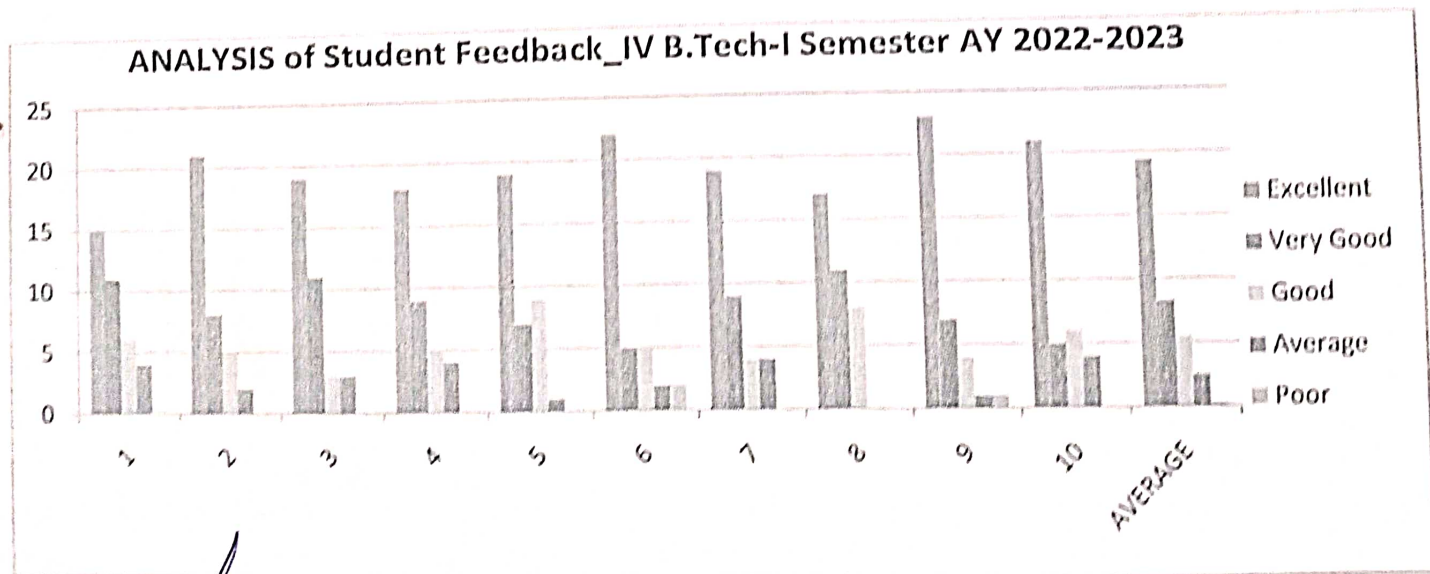
Principal
 PRINCIPAL
 CHIRALA ENGINEERING COLLEGE
 CHIRALA



CHIRALA ENGINEERING COLLEGE
 RAMAPURAM BEACH ROAD, CHIRALA, ANDHRA PRADESH - 523157.
 Approved by AICTE, Affiliated to JNTUK, Kakinada.
 (ISO 9001:2008 Certified Institution)

SUMMARY OF STUDENT'S FEEDBACK FORM ON CURRICULUM (A.Y-2022-2023)

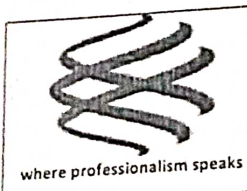
Program Year	Year-Semester	Branch	Total No. Of Samples				
2022 - 2023	IV-I	ECE	36				
S.NO.	ATTRIBUTES/PARAMETERS	Excellent	Very Good	Good	Average	Poor	
1	Rate the syllabus you studied in relation to the competencies required from the courses.	15	11	6	4		
2	The credit allotment for the course is appropriate.	21	8	5	2		
3	The depth of the course content is appropriate in relation to the intended course outcomes (COs).	19	11	3	3		
4	The syllabus's modules are properly ordered.	18	9	5	4		
5	The curriculum helped me increase my abilities to develop, analyze, and solve problems.	19	7	9	1		
6	Rate the evaluation scheme created for each course.	22	5	5	2	2	
7	The course materials are readily available.	19	9	4	4		
8	Calculate the proportion (%) of courses that have lab components.	17	11	8			
9	The laboratory trials improved conceptual knowledge and allowed for the connection of theory to practice (Experiential Learning).	23	7	4	1	1	
10	The entire syllabus was completed in the class by the teacher	21	5	6	4		
	AVERAGE	19.4	8.3	5.5	2.5	0.3	



[Signature]
 Head of the Department
 Department of E.C.E.
 CHIRALA ENGINEERING COLLEGE
 CHIRALA-523157



[Signature]
 Principal
 CHIRALA ENGINEERING COLLEGE
 CHIRALA



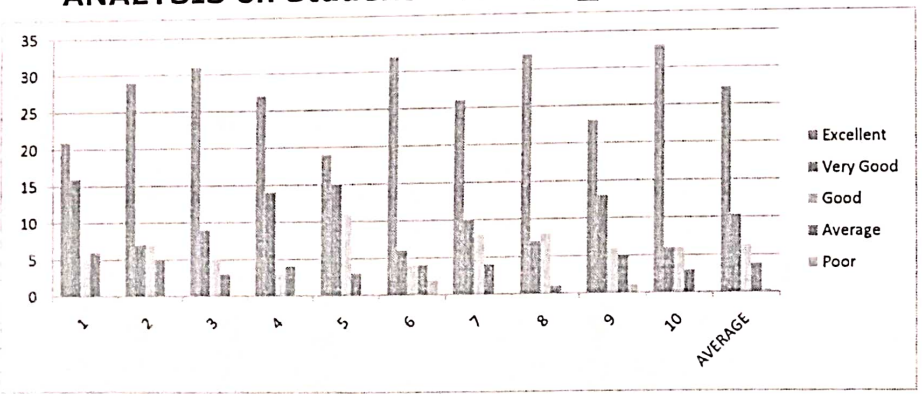
CHIRALA ENGINEERING COLLEGE
 RAMAPURAM BEACH ROAD, CHIRALA, ANDHRA PRADESH - 523157.
 Approved by AICTE, Affiliated to JNTUK, Kakinada.
 (ISO 9001:2008 Certified Institution)

SUMMARY OF STUDENT'S FEEDBACK FORM ON CURRICULUM

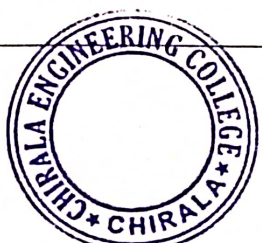
Program Year	Year-Semester	Branch	Total No. Of Samples
2022 - 2023	II-II	ECE	48

S.NO.	ATTRIBUTES/PARAMETERS	Excellent	Very Good	Good	Average	Poor
1	Rate the syllabus you studied in relation to the competencies required from the courses.	21	16	5	6	
2	The credit allotment for the course is appropriate.	29	7	7	5	
3	The depth of the course content is appropriate in relation to the intended course outcomes (COs).	31	9	5	3	
4	The syllabus's modules are properly ordered.	27	14	3	4	
5	The curriculum helped me increase my abilities to develop, analyze, and solve problems.	19	15	11	3	
6	Rate the evaluation scheme created for each course.	32	6	4	4	2
7	The course materials are readily available.	26	10	8	4	
8	Calculate the proportion (%) of courses that have lab components.	32	7	8	1	
9	The laboratory trials improved conceptual knowledge and allowed for the connection of theory to practice (Experiential Learning).	23	13	6	5	1
10	The entire syllabus was completed in the class by the teacher	33	6	6	3	
AVERAGE		27.3	10.3	6.3	3.8	0.3

ANALYSIS on Student Feedback_ II B.Tech-II Semester AY 2022-2023



[Signature]
 Head of the Department
 Department of E.C.E
 CHIRALA ENGINEERING COLLEGE
 CHIRALA-523157



[Signature]
 Principal
 PRINCIPAL
 CHIRALA ENGINEERING COLLEGE
 CHIRALA



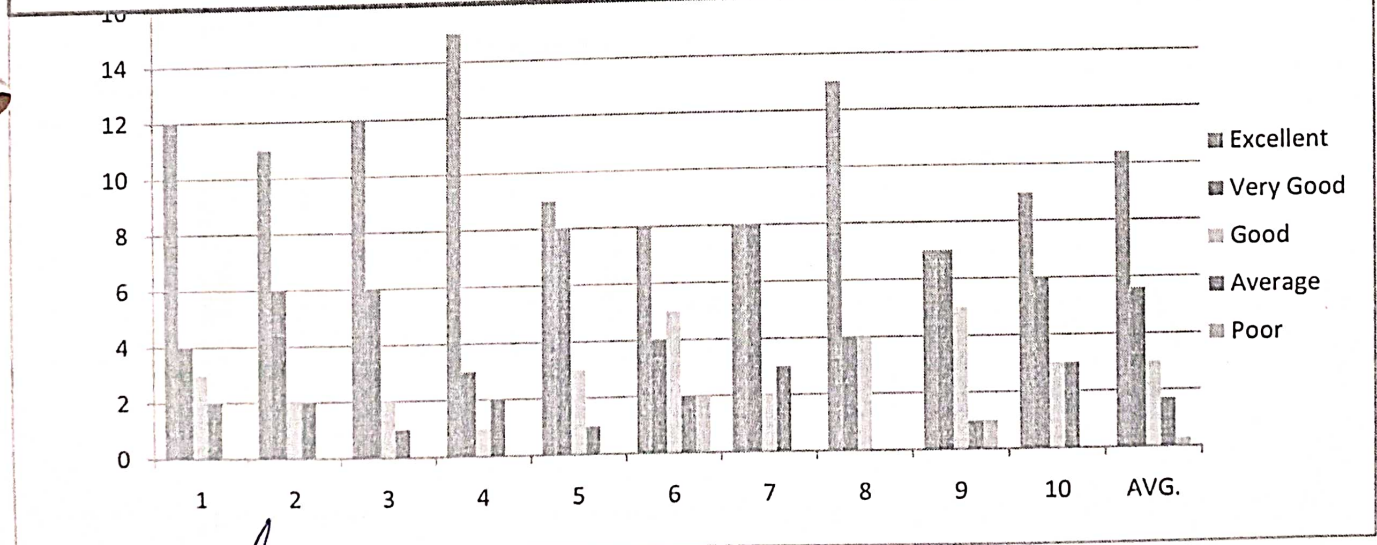
CHIRALA ENGINEERING COLLEGE
 RAMAPURAM BEACH ROAD, CHIRALA, ANDHRA PRADESH - 523157.
 Approved by AICTE, Affiliated to JNTUK, Kakinada.
 (ISO 9001:2008 Certified Institution)

SUMMARY OF STUDENT'S FEEDBACK FORM ON CURRICULUM

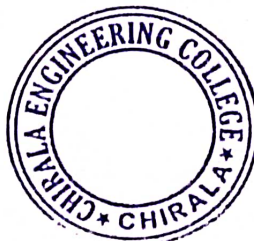
Program Year	Year-Semester	Branch	Total No. Of Samples
2022 - 2023	III-II	ECE	21

S.NO.	ATTRIBUTES/PARAMETERS	Excellent	Very Good	Good	Average	Poor
1	Rate the syllabus you studied in relation to the competencies required from the courses.	12	4	3	2	
2	The credit allotment for the course is appropriate.	11	6	2	2	
3	The depth of the course content is appropriate in relation to the intended course outcomes (COs).	12	6	2	1	
4	The syllabus's modules are properly ordered.	15	3	1	2	
5	The curriculum helped me increase my abilities to develop, analyze, and solve problems.	9	8	3	1	
6	Rate the evaluation scheme created for each course.	8	4	5	2	2
7	The course materials are readily available.	8	8	2	3	
8	Calculate the proportion (%) of courses that have lab components.	13	4	4		
9	The laboratory trials improved conceptual knowledge and allowed for the connection of theory to practice (Experiential Learning).	7	7	5	1	1
10	The entire syllabus was completed in the class by the teacher	9	6	3	3	
	AVERAGE	10.4	5.6	3	1.7	0.3

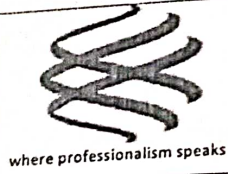
Analysis on student feedback_III B.Tech-II Semester For A.Y_2022-2023



[Signature]
 Head of the Department
 Department of E.C.E
 CHIRALA ENGINEERING COLLEGE
 CHIRALA-523157



[Signature]
 Principal
 CHIRALA ENGINEERING COLLEGE
 CHIRALA

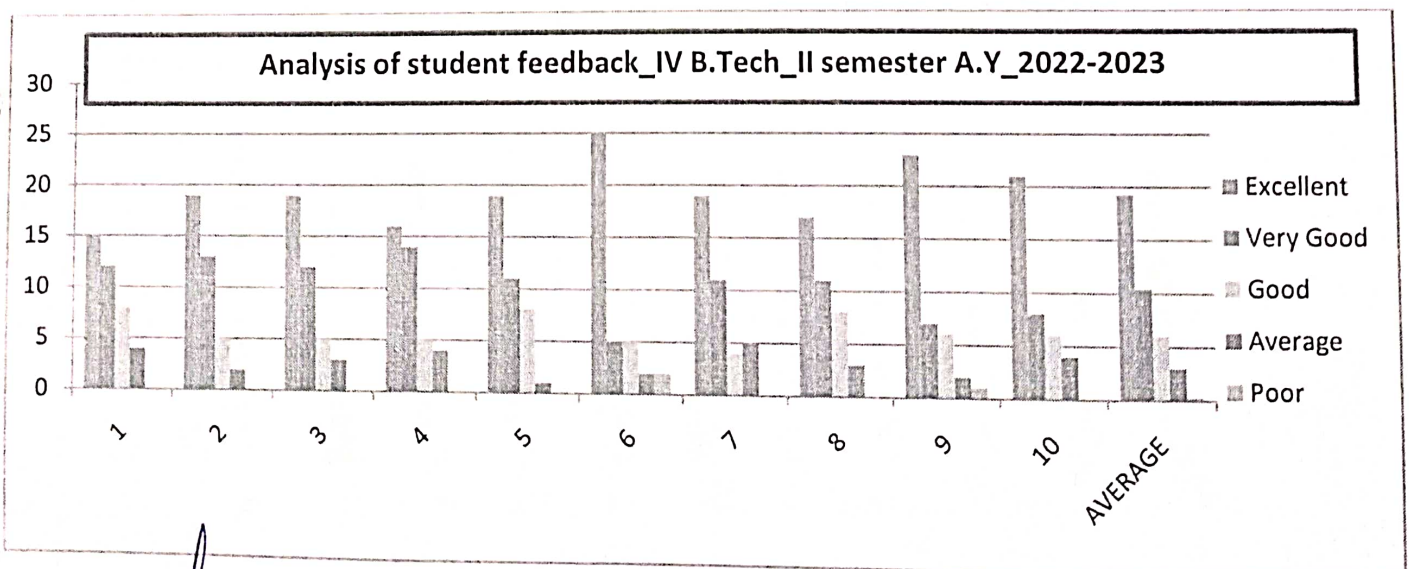


CHIRALA ENGINEERING COLLEGE
 RAMAPURAM BEACH ROAD, CHIRALA, ANDHRA PRADESH – 523157.
 Approved by AICTE, Affiliated to JNTUK, Kakinada.
 (ISO 9001:2008 Certified Institution)

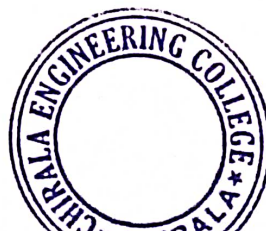
SUMMARY OF STUDENT'S FEEDBACK FORM ON CURRICULUM

Program Year 2022 - 2023	Year-Semester IV-II	Branch ECE	Total No. Of Samples 39
-----------------------------	------------------------	---------------	----------------------------

S.NO.	ATTRIBUTES/PARAMETERS	Excellent	Very Good	Good	Average	Poor
1	Rate the syllabus you studied in relation to the competencies required from the courses.	15	12	8	4	
2	The credit allotment for the course is appropriate.	19	13	5	2	
3	The depth of the course content is appropriate in relation to the intended course outcomes (COs).	19	12	5	3	
4	The syllabus's modules are properly ordered.	16	14	5	4	
5	The curriculum helped me increase my abilities to develop, analyze, and solve problems.	19	11	8	1	
6	Rate the evaluation scheme created for each course.	25	5	5	2	2
7	The course materials are readily available.	19	11	4	5	
8	Calculate the proportion (%) of courses that have lab components.	17	11	8	3	
9	The laboratory trials improved conceptual knowledge and allowed for the connection of theory to practice (Experiential Learning).	23	7	6	2	1
10	The entire syllabus was completed in the class by the teacher	21	8	6	4	
	AVERAGE	19.3	10.4	6	3	0.3



[Signature]
 Head of the Department
 Department of E.C.E
 CHIRALA ENGINEERING COLLEGE
 CHIRALA-523157



[Signature]
 Principal
 CHIRALA ENGINEERING COLLEGE
 CHIRALA



where professionalism speaks

CHIRALA ENGINEERING COLLEGE

RAMAPURAM BEACH ROAD, CHIRALA, Andhra Pradesh – 523157.

Approved by AICTE, Affiliated to JNTUK, Kakinada.

(ISO 9001:2008 Certified Institution)

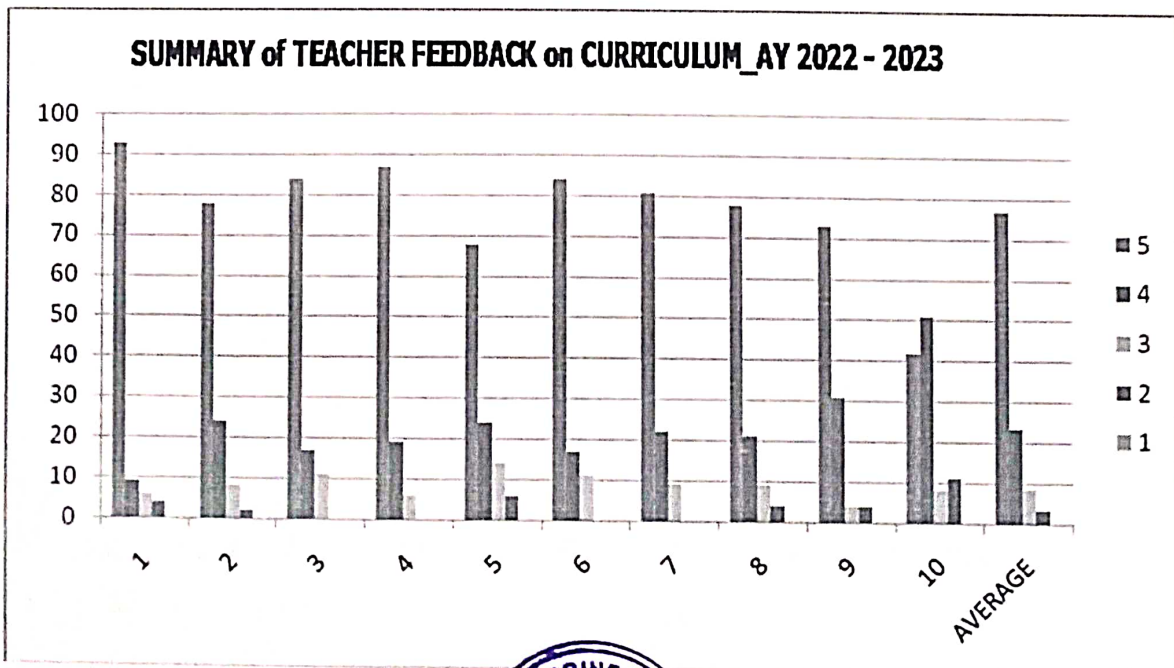
SUMMARY of TEACHER FEEDBACK ON CURRICULUM (A.Y-2022-2023)

The questionnaire is intended to collect information relating to your satisfaction towards the curriculum, learning and evaluation. The information provided by you will be kept confidential and will be used as feedback for quality improvement of the program of studies/institution.

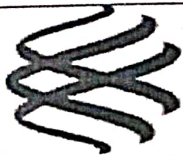
Directions: a score for each item please indicate your level of satisfaction with the following statement by choosing between 1 and 5.

*Rating score: Excellent (5), Very Good(4), Good(3), Average (2), Below Average(1)

S No	Curriculum, Teaching, Learning and Evaluation	5	4	3	2	1
1.	Curriculum and Syllabus are need based	93	9	6	4	
2.	The course outcomes are well defined and clear.	78	24	8	2	
3.	Sufficient number of relevant reading materials and digital resources are available in the Library	84	17	11		
4.	The course has good balance between theory and application.	87	19	6		
5.	The syllabus of this course increased my knowledge and perspective in the subject area.	68	24	14	6	
6.	I am able to achieve the minimum required course outcome attainment level for my class	84	17	11		
7.	I have taken sufficient steps to provide assistance to slow learners	81	22	9		
8.	I have contributed to the curriculum and/or syllabus development.	78	21	9	4	
9.	I have the freedom to propose, modify, suggest and incorporate new topics in the syllabus through proper forum.	73	31	4	4	
10.	I have the freedom to adopt new techniques/education tools strategies in teaching.	42	51	8	11	
	AVERAGE	76.8	23.5	8.6	3.1	0



[Signature]
Principal
CHIRALA ENGINEERING COLLEGE
CHIRALA,



where professionalism speaks

CHIRALA ENGINEERING COLLEGE

RAMAPURAM BEACH ROAD, CHIRALA, ANDHRA PRADESH – 523157.

Approved by AICTE, Affiliated to JNTUK, Kakinada.

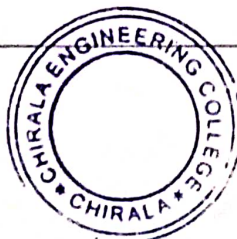
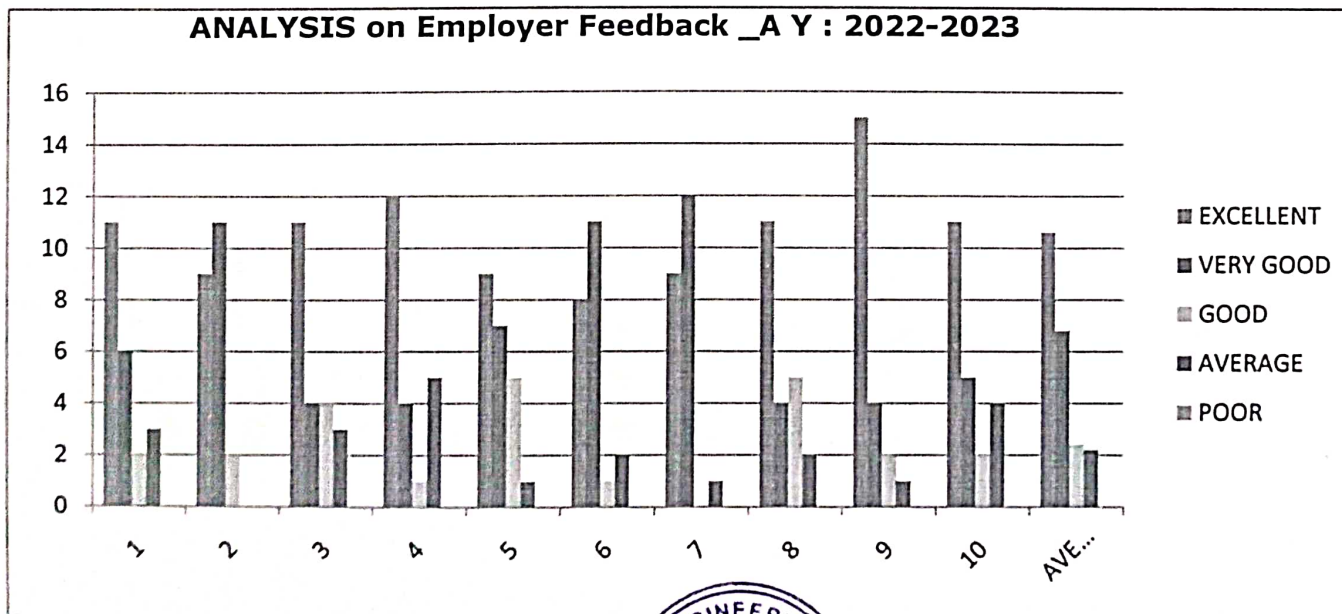
(ISO 9001:2008 Certified Institution)

SUMMARY OF EMPLOYER/INDUSTRY FEEDBACK

Employer feedback is collected and analyzed taken on curriculum designed by JNTUK. We have received total 22 employer feedback from department of electronics and communication engineering for the Academic year 2022-2023.

S.NO.	ATTRIBUTES	5	4	3	2	1
1.	How do you rate the technical knowledge of the students?	11	6	2	3	
2.	How do you rate the relevance of the curriculum for employability?	9	11	2		
3.	How do you rate the students' ability to work in teams?	11	4	4	3	
4.	How do you rate the students managerial and leadership qualities?	12	4	1	5	
5.	How do you rate the students' ability to learn and mould themselves in the industrial practices?	9	7	5	1	
6.	How do you rate the students' contribution to the growth of industries?	8	11	1	2	
7.	How do you rate the communication skills of the students?	9	12		1	
8.	How do you rate the offering of electives in relation to the technological advancements?	11	4	5	2	
9.	How do you rate the training and placement support in the curriculum?	15	4	2	1	
10.	How do you rate the overall learning ambience of the college?	11	5	2	4	
Average		10.6	6.8	2.4	2.2	0

ANALYSIS on Employer Feedback _A Y : 2022-2023



[Signature]
Principal
CHIRALA ENGINEERING COLLEGE
CHIRALA.



where professionalism speaks

CHIRALA ENGINEERING COLLEGE

RAMAPURAM BEACH ROAD, CHIRALA, Andhra Pradesh - 523157.

Approved by AICTE, Affiliated to JNTUK, Kakinada.

(ISO 9001:2008 Certified Institution)

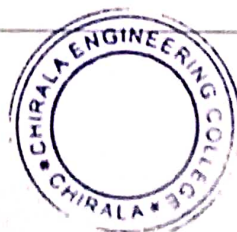
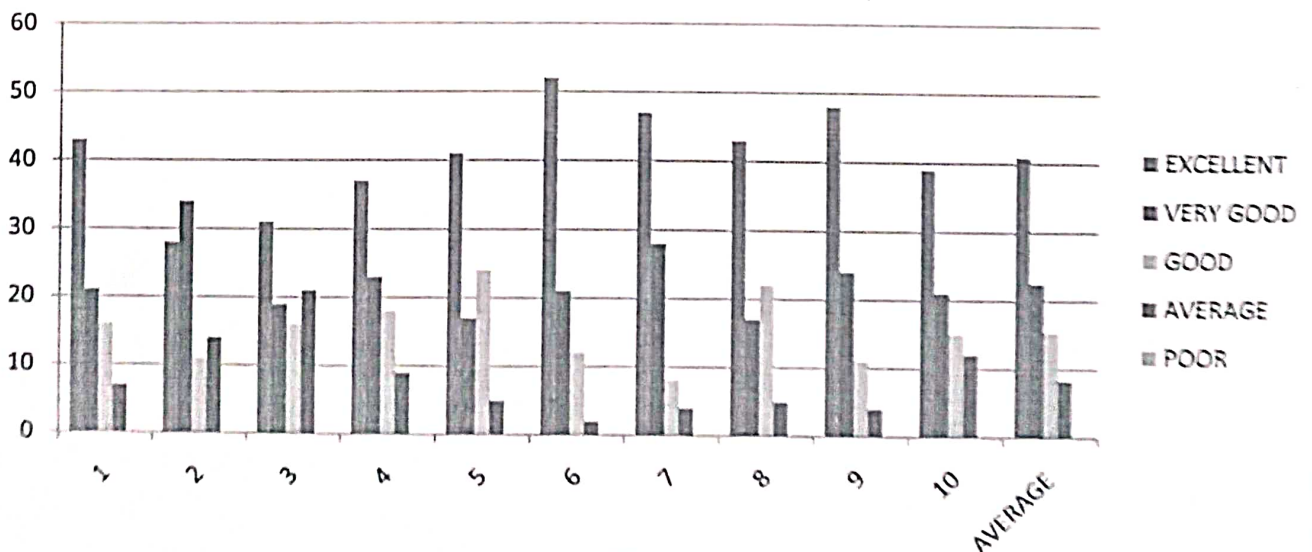
SUMMARY of ALUMNI FEEDBACK ON CURRICULUM (A.Y-2022-2023)

This feedback on Curriculum, Teaching, Learning and Evaluation is intended to collect information to obtain alumni input on the quality of education they received and the level of preparation they had at University. The purpose of this survey is to assess the quality of the academic program. We seek your help in completing this survey

*Rating score: Excellent (5), Very Good(4), Good(3), Average (2), Below Average(1)

S No	Questionnaire	5	4	3	2	1
1.	How do you rate the appropriateness of curriculum and syllabus content for your placement/higher education?	43	21	16	7	
2.	How do you rate co-curricular activities arranged during your study period?	28	34	11	14	
3.	How do you rate the availability of relevant reading materials and digital resources in the Library?	31	19	16	21	
4.	How do you rate the usefulness of institute-industry tie ups?	37	23	18	9	
5.	How do you rate experiential learning (hands-on) of the courses?	41	17	24	5	
6.	How do you rate the transparency of the academic processes of the institute?	52	21	12	2	
7.	How do you rate the academic initiatives undertaken for the benefit of students?	47	28	8	4	
8.	How do you rate the improvement of your inter and intra personal skills during your study period?	43	17	22	5	
9.	How do you rate the training and placement support in the curriculum?	48	24	11	4	
10.	How do you rate the leaning ambience of the college?	39	21	15	12	
	AVERAGE	40.9	22.5	15.3	8.3	0

SUMMARY of ALUMNI FEEDBACK on CURRICULUM _AY 2022 - 2023



Principal
PRINCIPAL
 CHIRALA ENGINEERING COLLEGE
 CHIRALA.