



where professionalism speaks

# CHIRALA ENGINEERING COLLEGE

RAMAPURAM BEACH ROAD, CHIRALA, ANDHRA PRADESH - 523157.

Approved by AICTE, Affiliated to JNTUK, Kakinada.

(ISO 9001:2008 Certified Institution)

## STUDENT'S FEEDBACK FORM ON CURRICULUM

Academic year	Course Year	Semester	Branch
2022-23	IV	I	ECE

S.NO.	ATTRIBUTES/PARAMETERS	Excellent	Very Good	Good	Average	Poor
1	Rate the syllabus you studied in relation to the competencies required from the courses.	✓				
2	The credit allotment for the course is appropriate.		✓			
3	The depth of the course content is appropriate in relation to the intended course outcomes (COs).			✓		
4	The syllabus's modules are properly ordered.		✓			
5	The curriculum helped me increase my abilities to develop, analyze, and solve problems.	✓				
6	Rate the evaluation scheme created for each course.			✓		
7	The course materials are readily available.	✓				
8	Calculate the proportion (%) of courses that have lab components.		✓			
9	The laboratory trials improved conceptual knowledge and allowed for the connection of theory to practice (Experiential Learning).	✓				
10	The entire syllabus was completed in the class by the teacher			✓		
11	Comments/Suggestions if any:					



where professionalism speaks

# CHIRALA ENGINEERING COLLEGE

RAMAPURAM BEACH ROAD, CHIRALA, ANDHRA PRADESH - 523157.

Approved by AICTE, Affiliated to JNTUK, Kakinada.

(ISO 9001:2008 Certified Institution)

## STUDENT'S FEEDBACK FORM ON CURRICULUM

Academic year	Course Year	Semester	Branch
2022 - 23	IV	I	ECE

S.NO.	ATTRIBUTES/PARAMETERS	Excellent	Very Good	Good	Average	Poor
1	Rate the syllabus you studied in relation to the competencies required from the courses.	✓				
2	The credit allotment for the course is appropriate.		✓			
3	The depth of the course content is appropriate in relation to the intended course outcomes (COs).			✓		
4	The syllabus's modules are properly ordered.	✓				
5	The curriculum helped me increase my abilities to develop, analyze, and solve problems.		✓			
6	Rate the evaluation scheme created for each course.	✓				
7	The course materials are readily available.		✓			
8	Calculate the proportion (%) of courses that have lab components.	✓				
9	The laboratory trials improved conceptual knowledge and allowed for the connection of theory to practice (Experiential Learning).			✓		
10	The entire syllabus was completed in the class by the teacher	✓				
11	Comments/Suggestions if any:					



where professionalism speaks

# CHIRALA ENGINEERING COLLEGE

RAMAPURAM BEACH ROAD, CHIRALA, ANDHRA PRADESH - 523157.

Approved by AICTE, Affiliated to JNTUK, Kakinada.

(ISO 9001:2008 Certified Institution)

## STUDENT'S FEEDBACK FORM ON CURRICULUM

Academic year	Course Year	Semester	Branch
2022 - 23	IV	I	ECE

S.NO.	ATTRIBUTES/PARAMETERS	Excellent	Very Good	Good	Average	Poor
1	Rate the syllabus you studied in relation to the competencies required from the courses.		✓			
2	The credit allotment for the course is appropriate.	✓				
3	The depth of the course content is appropriate in relation to the intended course outcomes (COs).			✓		
4	The syllabus's modules are properly ordered.	✓				
5	The curriculum helped me increase my abilities to develop, analyze, and solve problems.		✓			
6	Rate the evaluation scheme created for each course.	✓				
7	The course materials are readily available.			✓		
8	Calculate the proportion (%) of courses that have lab components.		✓			
9	The laboratory trials improved conceptual knowledge and allowed for the connection of theory to practice (Experiential Learning).		✓			
10	The entire syllabus was completed in the class by the teacher	✓				
11	Comments/Suggestions if any:					



where professionalism speaks

# CHIRALA ENGINEERING COLLEGE

RAMAPURAM BEACH ROAD, CHIRALA, ANDHRA PRADESH - 523157.

Approved by AICTE, Affiliated to JNTUK, Kakinada.

(ISO 9001:2008 Certified Institution)

## STUDENT'S FEEDBACK FORM ON CURRICULUM

Academic year	Course Year	Semester	Branch
2022 - 23	IV	I	ECE

S.NO.	ATTRIBUTES/PARAMETERS	Excellent	Very Good	Good	Average	Poor
1	Rate the syllabus you studied in relation to the competencies required from the courses.		✓			
2	The credit allotment for the course is appropriate.	✓				
3	The depth of the course content is appropriate in relation to the intended course outcomes (COs).		✓			
4	The syllabus's modules are properly ordered.	✓				
5	The curriculum helped me increase my abilities to develop, analyze, and solve problems.		✓			
6	Rate the evaluation scheme created for each course.			✓		
7	The course materials are readily available.	✓				
8	Calculate the proportion (%) of courses that have lab components.		✓			
9	The laboratory trials improved conceptual knowledge and allowed for the connection of theory to practice (Experiential Learning).	✓		✓		
10	The entire syllabus was completed in the class by the teacher			✓		
11	Comments/Suggestions if any:					



where professionalism speaks

# CHIRALA ENGINEERING COLLEGE

RAMAPURAM BEACH ROAD, CHIRALA, ANDHRA PRADESH - 523157.

Approved by AICTE, Affiliated to JNTUK, Kakinada.

(ISO 9001:2008 Certified Institution)

## STUDENT'S FEEDBACK FORM ON CURRICULUM

Academic year	Course Year	Semester	Branch
2022-23	IV	I	ECE

S.NO.	ATTRIBUTES/PARAMETERS	Excellent	Very Good	Good	Average	Poor
1	Rate the syllabus you studied in relation to the competencies required from the courses.	✓				
2	The credit allotment for the course is appropriate.		✓			
3	The depth of the course content is appropriate in relation to the intended course outcomes (COs).		✓			
4	The syllabus's modules are properly ordered.	✓				
5	The curriculum helped me increase my abilities to develop, analyze, and solve problems.		✓			
6	Rate the evaluation scheme created for each course.	✓				
7	The course materials are readily available.		✓			
8	Calculate the proportion (%) of courses that have lab components.			✓		
9	The laboratory trials improved conceptual knowledge and allowed for the connection of theory to practice (Experiential Learning).		✓			
10	The entire syllabus was completed in the class by the teacher	✓				
11	Comments/Suggestions if any:					



# CHIRALA ENGINEERING COLLEGE

RAMAPURAM BEACH ROAD, CHIRALA, ANDHRA PRADESH - 523157.

Approved by AICTE, Affiliated to JNTUK, Kakinada.

(ISO 9001:2008 Certified Institution)

## STUDENT'S FEEDBACK FORM ON CURRICULUM

Academic year	Course Year	Semester	Branch
2022-23	III	3	ECE

S.NO.	ATTRIBUTES/PARAMETERS	Excellent	Very Good	Good	Average	Poor
1	Rate the syllabus you studied in relation to the competencies required from the courses.	✓				
2	The credit allotment for the course is appropriate.			✓		
3	The depth of the course content is appropriate in relation to the intended course outcomes (COs).	✓				
4	The syllabus's modules are properly ordered.		✓			
5	The curriculum helped me increase my abilities to develop, analyze, and solve problems.			✓		
6	Rate the evaluation scheme created for each course.	✓				
7	The course materials are readily available.		✓			
8	Calculate the proportion (%) of courses that have lab components.	✓				
9	The laboratory trials improved conceptual knowledge and allowed for the connection of theory to practice (Experiential Learning).			✓		
10	The entire syllabus was completed in the class by the teacher		✓			
11	Comments/Suggestions if any:					



where professionalism speaks

# CHIRALA ENGINEERING COLLEGE

RAMAPURAM BEACH ROAD, CHIRALA, ANDHRA PRADESH - 523157.

Approved by AICTE, Affiliated to JNTUK, Kakinada.

(ISO 9001:2008 Certified Institution)

## STUDENT'S FEEDBACK FORM ON CURRICULUM

Academic year	Course Year	Semester	Branch
2022 - 23	III	I	ECE

S.NO.	ATTRIBUTES/PARAMETERS	Excellent	Very Good	Good	Average	Poor
1	Rate the syllabus you studied in relation to the competencies required from the courses.	✓				
2	The credit allotment for the course is appropriate.		✓			
3	The depth of the course content is appropriate in relation to the intended course outcomes (COs).	✓				
4	The syllabus's modules are properly ordered.			✓		
5	The curriculum helped me increase my abilities to develop, analyze, and solve problems.		✓			
6	Rate the evaluation scheme created for each course.	✓				
7	The course materials are readily available.			✓		
8	Calculate the proportion (%) of courses that have lab components.	✓				
9	The laboratory trials improved conceptual knowledge and allowed for the connection of theory to practice (Experiential Learning).	✓				
10	The entire syllabus was completed in the class by the teacher		✓			
11	Comments/Suggestions if any:					



where professionalism speaks

# CHIRALA ENGINEERING COLLEGE

RAMAPURAM BEACH ROAD, CHIRALA, ANDHRA PRADESH - 523157.

Approved by AICTE, Affiliated to JNTUK, Kakinada.

(ISO 9001:2008 Certified Institution)

## STUDENT'S FEEDBACK FORM ON CURRICULUM

Academic year	Course Year	Semester	Branch
2022-23	IV	I	ECE

S.NO.	ATTRIBUTES/PARAMETERS	Excellent	Very Good	Good	Average	Poor
1	Rate the syllabus you studied in relation to the competencies required from the courses.	✓				
2	The credit allotment for the course is appropriate.		✓			
3	The depth of the course content is appropriate in relation to the intended course outcomes (COs).			✓		
4	The syllabus's modules are properly ordered.			✓		
5	The curriculum helped me increase my abilities to develop, analyze, and solve problems.	✓				
6	Rate the evaluation scheme created for each course.		✓			
7	The course materials are readily available.	✓				
8	Calculate the proportion (%) of courses that have lab components.		✓			
9	The laboratory trials improved conceptual knowledge and allowed for the connection of theory to practice (Experiential Learning).			✓		
10	The entire syllabus was completed in the class by the teacher	✓				
11	Comments/Suggestions if any:					





where professionalism speaks

# CHIRALA ENGINEERING COLLEGE

RAMAPURAM BEACH ROAD, CHIRALA, ANDHRA PRADESH - 523157.

Approved by AICTE, Affiliated to JNTUK, Kakinada.

(ISO 9001:2008 Certified Institution)

## STUDENT'S FEEDBACK FORM ON CURRICULUM

Academic year	Course Year	Semester	Branch
2022 - 23	III	I	ECE

S.NO.	ATTRIBUTES/PARAMETERS	Excellent	Very Good	Good	Average	Poor
1	Rate the syllabus you studied in relation to the competencies required from the courses.		✓			
2	The credit allotment for the course is appropriate.	✓				
3	The depth of the course content is appropriate in relation to the intended course outcomes (COs).	✓				
4	The syllabus's modules are properly ordered.		✓			
5	The curriculum helped me increase my abilities to develop, analyze, and solve problems.			✓		
6	Rate the evaluation scheme created for each course.	✓				
7	The course materials are readily available.		✓			
8	Calculate the proportion (%) of courses that have lab components.			✓		
9	The laboratory trials improved conceptual knowledge and allowed for the connection of theory to practice (Experiential Learning).		✓			
10	The entire syllabus was completed in the class by the teacher	✓				
11	Comments/Suggestions if any:					



# CHIRALA ENGINEERING COLLEGE

RAMAPURAM BEACH ROAD, CHIRALA, ANDHRA PRADESH - 523157.

Approved by AICTE, Affiliated to JNTUK, Kakinada.

(ISO 9001:2008 Certified Institution)

## STUDENT'S FEEDBACK FORM ON CURRICULUM

Academic year	Course Year	Semester	Branch
2022-23	III	I	ECE

S.NO.	ATTRIBUTES/PARAMETERS	Excellent	Very Good	Good	Average	Poor
1	Rate the syllabus you studied in relation to the competencies required from the courses.	✓				
2	The credit allotment for the course is appropriate.		✓			
3	The depth of the course content is appropriate in relation to the intended course outcomes (COs).		✓			
4	The syllabus's modules are properly ordered.	✓				
5	The curriculum helped me increase my abilities to develop, analyze, and solve problems.	✓				
6	Rate the evaluation scheme created for each course.			✓		
7	The course materials are readily available.		✓			
8	Calculate the proportion (%) of courses that have lab components.	✓				
9	The laboratory trials improved conceptual knowledge and allowed for the connection of theory to practice (Experiential Learning).	✓				
10	The entire syllabus was completed in the class by the teacher		✓			
11	Comments/Suggestions if any:					



where professionalism speaks

# CHIRALA ENGINEERING COLLEGE

RAMAPURAM BEACH ROAD, CHIRALA, ANDHRA PRADESH - 523157.

Approved by AICTE, Affiliated to JNTUK, Kakinada.

(ISO 9001:2008 Certified Institution)

## STUDENT'S FEEDBACK FORM ON CURRICULUM

Academic year	Course Year	Semester	Branch
2022-23	II	I	ECE

S.NO.	ATTRIBUTES/PARAMETERS	Excellent	Very Good	Good	Average	Poor
1	Rate the syllabus you studied in relation to the competencies required from the courses.	✓				
2	The credit allotment for the course is appropriate.		✓			
3	The depth of the course content is appropriate in relation to the intended course outcomes (COs).	✓				
4	The syllabus's modules are properly ordered.			✓		
5	The curriculum helped me increase my abilities to develop, analyze, and solve problems.	✓				
6	Rate the evaluation scheme created for each course.		✓			
7	The course materials are readily available.					
8	Calculate the proportion (%) of courses that have lab components.	✓		✓		
9	The laboratory trials improved conceptual knowledge and allowed for the connection of theory to practice (Experiential Learning).	✓				
10	The entire syllabus was completed in the class by the teacher		✓			
11	Comments/Suggestions if any:					



where professionalism speaks

# CHIRALA ENGINEERING COLLEGE

RAMAPURAM BEACH ROAD, CHIRALA, ANDHRA PRADESH - 523157.

Approved by AICTE, Affiliated to JNTUK, Kakinada.

(ISO 9001:2008 Certified Institution)

## STUDENT'S FEEDBACK FORM ON CURRICULUM

Academic year	Course Year	Semester	Branch
2022-23	II	I	ECC

S.NO.	ATTRIBUTES/PARAMETERS	Excellent	Very Good	Good	Average	Poor
1	Rate the syllabus you studied in relation to the competencies required from the courses.	✓				
2	The credit allotment for the course is appropriate.			✓		
3	The depth of the course content is appropriate in relation to the intended course outcomes (COs).		✓			
4	The syllabus's modules are properly ordered.	✓				
5	The curriculum helped me increase my abilities to develop, analyze, and solve problems.		✓			
6	Rate the evaluation scheme created for each course.	✓				
7	The course materials are readily available.		✓			
8	Calculate the proportion (%) of courses that have lab components.	✓				
9	The laboratory trials improved conceptual knowledge and allowed for the connection of theory to practice (Experiential Learning).		✓			
10	The entire syllabus was completed in the class by the teacher	✓				
11	Comments/Suggestions if any:					



where professionalism speaks

# CHIRALA ENGINEERING COLLEGE

RAMAPURAM BEACH ROAD, CHIRALA, ANDHRA PRADESH - 523157.

Approved by AICTE, Affiliated to JNTUK, Kakinada.

(ISO 9001:2008 Certified Institution)

## STUDENT'S FEEDBACK FORM ON CURRICULUM

Academic year	Course Year	Semester	Branch
2022-23	II	I	FCE

S.NO.	ATTRIBUTES/PARAMETERS	Excellent	Very Good	Good	Average	Poor
1	Rate the syllabus you studied in relation to the competencies required from the courses.	✓				
2	The credit allotment for the course is appropriate.		✓			
3	The depth of the course content is appropriate in relation to the intended course outcomes (COs).	✓				
4	The syllabus's modules are properly ordered.		✓			
5	The curriculum helped me increase my abilities to develop, analyze, and solve problems.	✓				
6	Rate the evaluation scheme created for each course.		✓			
7	The course materials are readily available.		✓			
8	Calculate the proportion (%) of courses that have lab components.		✓			
9	The laboratory trials improved conceptual knowledge and allowed for the connection of theory to practice (Experiential Learning).	✓				
10	The entire syllabus was completed in the class by the teacher		✓			
11	Comments/Suggestions if any:	Need extend library hours for weekly.				



where professionalism speaks

## CHIRALA ENGINEERING COLLEGE

RAMAPURAM BEACH ROAD, CHIRALA, ANDHRA PRADESH - 523157.

Approved by AICTE, Affiliated to JNTUK, Kakinada.

(ISO 9001:2008 Certified Institution)

### STUDENT'S FEEDBACK FORM ON CURRICULUM

Academic year	Course Year	Semester	Branch
2022-23	II	I	ECE

S.NO.	ATTRIBUTES/PARAMETERS	Excellent	Very Good	Good	Average	Poor
1	Rate the syllabus you studied in relation to the competencies required from the courses.	✓				
2	The credit allotment for the course is appropriate.		✓			
3	The depth of the course content is appropriate in relation to the intended course outcomes (COs).	✓				
4	The syllabus's modules are properly ordered.			✓		
5	The curriculum helped me increase my abilities to develop, analyze, and solve problems.	✓				
6	Rate the evaluation scheme created for each course.	✓				
7	The course materials are readily available.		✓			
8	Calculate the proportion (%) of courses that have lab components.	✓				
9	The laboratory trials improved conceptual knowledge and allowed for the connection of theory to practice (Experiential Learning).			✓		
10	The entire syllabus was completed in the class by the teacher		✓			
11	Comments/Suggestions if any:					



# CHIRALA ENGINEERING COLLEGE

RAMAPURAM BEACH ROAD, CHIRALA, ANDHRA PRADESH - 523157.

Approved by AICTE, Affiliated to JNTUK, Kakinada.

(ISO 9001:2008 Certified Institution)

## STUDENT'S FEEDBACK FORM ON CURRICULUM

Academic year	Course Year	Semester	Branch
2022-23	II	I	ECE

S.NO.	ATTRIBUTES/PARAMETERS	Excellent	Very Good	Good	Average	Poor
1	Rate the syllabus you studied in relation to the competencies required from the courses.		✓			
2	The credit allotment for the course is appropriate.	✓				
3	The depth of the course content is appropriate in relation to the intended course outcomes (COs).			✓		
4	The syllabus's modules are properly ordered.	✓				
5	The curriculum helped me increase my abilities to develop, analyze, and solve problems.		✓			
6	Rate the evaluation scheme created for each course.	✓				
7	The course materials are readily available.			✓		
8	Calculate the proportion (%) of courses that have lab components.		✓			
9	The laboratory trials improved conceptual knowledge and allowed for the connection of theory to practice (Experiential Learning).	✓				
10	The entire syllabus was completed in the class by the teacher		✓			
11	Comments/Suggestions if any:					



# CHIRALA ENGINEERING COLLEGE

RAMAPURAM BEACH ROAD, CHIRALA, ANDHRA PRADESH - 523157.

Approved by AICTE, Affiliated to JNTUK, Kakinada.

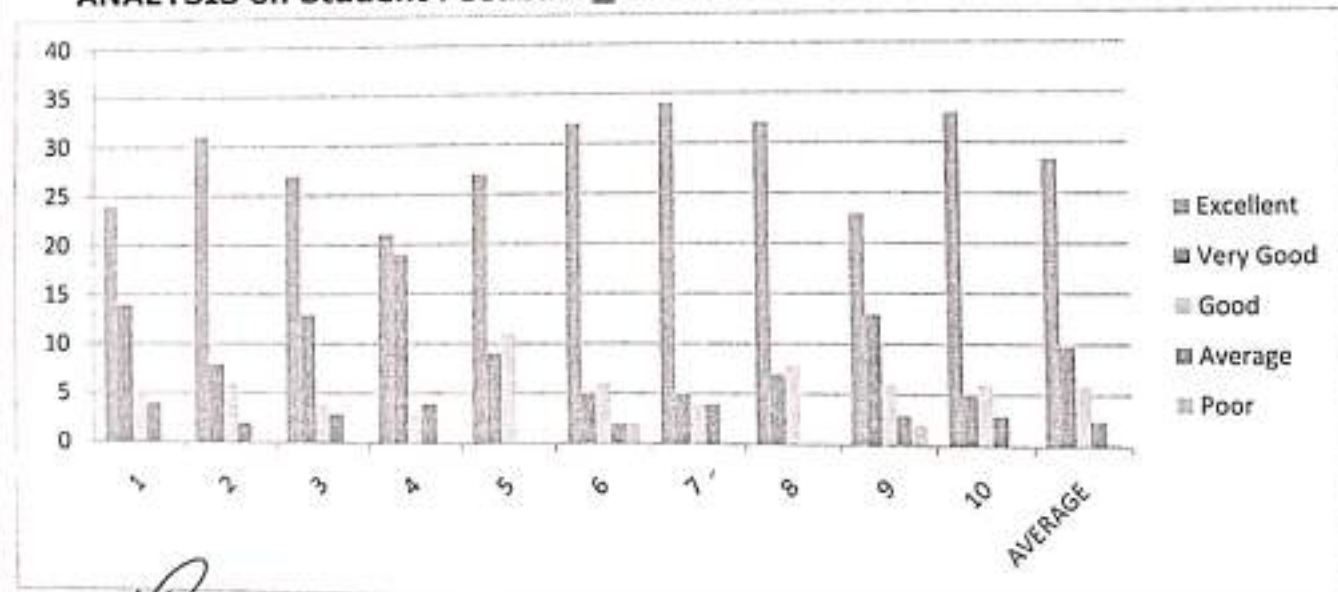
(ISO 9001:2008 Certified Institution)

## SUMMARY OF STUDENT'S FEEDBACK FORM ON CURRICULUM (A.Y-2022-2023)

Program Year 2022 - 2023	Year-Semester II-I	Branch ECE	Total No. Of Samples 47
-----------------------------	-----------------------	---------------	----------------------------

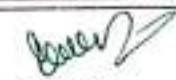
S.NO.	ATTRIBUTES/PARAMETERS	Excellent	Very Good	Good	Average	Poor
1	Rate the syllabus you studied in relation to the competencies required from the courses.	24	14	5	4	
2	The credit allotment for the course is appropriate.	31	8	6	2	
3	The depth of the course content is appropriate in relation to the intended course outcomes (COs).	27	13	4	3	
4	The syllabus's modules are properly ordered.	21	19	3	4	
5	The curriculum helped me increase my abilities to develop, analyze, and solve problems.	27	9	11		
6	Rate the evaluation scheme created for each course.	32	5	6	2	2
7	The course materials are readily available.	34	5	4	4	
8	Calculate the proportion (%) of courses that have lab components.	32	7	8		
9	The laboratory trials improved conceptual knowledge and allowed for the connection of theory to practice (Experiential Learning).	23	13	6	3	2
10	The entire syllabus was completed in the class by the teacher	33	5	6	3	
	AVERAGE	28.4	9.8	5.9	2.5	0.4

### ANALYSIS on Student Feedback\_ II B.Tech-I Semester AY 2022-2023



  
 Head of the Department  
 Department of E.C  
 CHIRALA ENGINEERING COLLEGE  
 CHIRALA-523157



  
 Principal  
 PRINCIPAL  
 CHIRALA ENGINEERING COLLEGE,  
 CHIRALA





where professionalism speaks

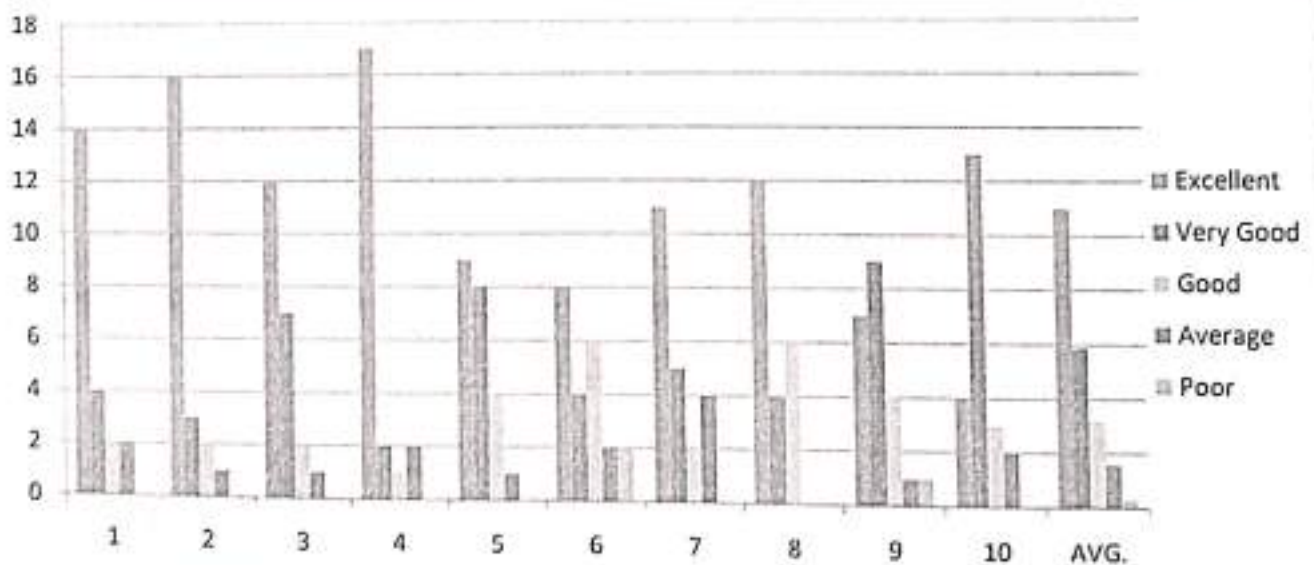
**CHIRALA ENGINEERING COLLEGE**  
RAMAPURAM BEACH ROAD, CHIRALA, ANDHRA PRADESH - 523157.  
Approved by AICTE, Affiliated to JNTUK, Kakinada.  
(ISO 9001:2008 Certified Institution)

**SUMMARY OF STUDENT'S FEEDBACK FORM ON CURRICULUM (A.Y-2022-2023)**

Program Year	Year-Semester	Branch	Total No. Of Samples
2022 - 2023	III-I	ECE	22

S.NO.	ATTRIBUTES/PARAMETERS	Excellent	Very Good	Good	Average	Poor
1	Rate the syllabus you studied in relation to the competencies required from the courses.	14	4	2	2	
2	The credit allotment for the course is appropriate.	16	3	2	1	
3	The depth of the course content is appropriate in relation to the intended course outcomes (COs).	12	7	2	1	
4	The syllabus's modules are properly ordered.	17	2	1	2	
5	The curriculum helped me increase my abilities to develop, analyze, and solve problems.	9	8	4	1	
6	Rate the evaluation scheme created for each course.	8	4	6	2	2
7	The course materials are readily available.	11	5	2	4	
8	Calculate the proportion (%) of courses that have lab components.	12	4	6		
9	The laboratory trials improved conceptual knowledge and allowed for the connection of theory to practice (Experiential Learning).	7	9	4	1	1
10	The entire syllabus was completed in the class by the teacher	4	13	3	2	
	AVERAGE	11	5.9	3.2	1.6	0.3

**ANALYSIS on Student Feedback\_ III B.Tech-I Semester AY 2022-2023**



*[Signature]*  
Head of the Department  
Department of E.C.E  
CHIRALA ENGINEERING COLLEGE  
CHIRALA-523157



*[Signature]*  
Principal  
PRINCIPAL  
CHIRALA ENGINEERING COLLEGE  
CHIRALA



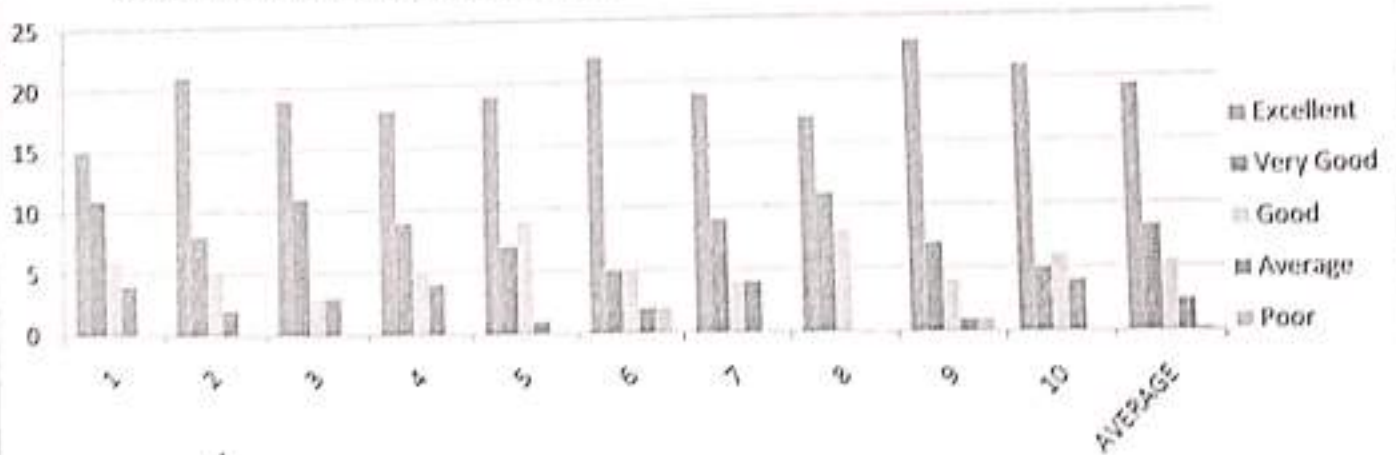
# CHIRALA ENGINEERING COLLEGE

RAMAPURAM BEACH ROAD, CHIRALA, ANDHRA PRADESH - 523157.  
Approved by AICTE, Affiliated to JNTUK, Kakinada.  
(ISO 9001:2008 Certified Institution)

## SUMMARY OF STUDENT'S FEEDBACK FORM ON CURRICULUM (A.Y-2022-2023)

Program Year 2022 - 2023	Year-Semester IV-I	Branch ECE	Total No. Of Samples 36			
S.NO.	ATTRIBUTES/PARAMETERS	Excellent	Very Good	Good	Average	Poor
1	Rate the syllabus you studied in relation to the competencies required from the courses.	15	11	6	4	
2	The credit allotment for the course is appropriate.	21	8	5	2	
3	The depth of the course content is appropriate in relation to the intended course outcomes (COs).	19	11	3	3	
4	The syllabus's modules are properly ordered.	18	9	5	4	
5	The curriculum helped me increase my abilities to develop, analyze, and solve problems.	19	7	9	1	
6	Rate the evaluation scheme created for each course.	22	5	5	2	2
7	The course materials are readily available.	19	9	4	4	
8	Calculate the proportion (%) of courses that have lab components.	17	11	8		
9	The laboratory trials improved conceptual knowledge and allowed for the connection of theory to practice (Experiential Learning).	23	7	4	1	1
10	The entire syllabus was completed in the class by the teacher	21	5	6	4	
<b>AVERAGE</b>		<b>19.4</b>	<b>8.3</b>	<b>5.5</b>	<b>2.5</b>	<b>0.3</b>

**ANALYSIS of Student Feedback\_IV B.Tech-I Semester AY 2022-2023**



Head of the Department  
 Department of E.C.E.  
**CHIRALA ENGINEERING COLLEGE**  
 CHIRALA-523157



Principal  
**CHIRALA ENGINEERING COLLEGE**  
 CHIRALA



where professionalism speaks

# CHIRALA ENGINEERING COLLEGE

RAMAPURAM BEACH ROAD, CHIRALA, ANDHRA PRADESH - 523157.

Approved by AICTE, Affiliated to JNTUK, Kakinada.

(ISO 9001:2008 Certified Institution)

## STUDENT'S FEEDBACK FORM ON CURRICULUM

Academic year	Course Year	Semester	Branch
2022-23	IV	II	ECE

S.NO.	ATTRIBUTES/PARAMETERS	Excellent	Very Good	Good	Average	Poor
1	Rate the syllabus you studied in relation to the competencies required from the courses.	✓				
2	The credit allotment for the course is appropriate.	✓				
3	The depth of the course content is appropriate in relation to the intended course outcomes (COs).	✓				
4	The syllabus's modules are properly ordered.		✓			
5	The curriculum helped me increase my abilities to develop, analyze, and solve problems.		✓			
6	Rate the evaluation scheme created for each course.			✓		
7	The course materials are readily available.	✓				
8	Calculate the proportion (%) of courses that have lab components.		✓			
9	The laboratory trials improved conceptual knowledge and allowed for the connection of theory to practice (Experiential Learning).	✓				
10	The entire syllabus was completed in the class by the teacher		✓			
11	Comments/Suggestions if any:					



where professionalism speaks

# CHIRALA ENGINEERING COLLEGE

RAMAPURAM BEACH ROAD, CHIRALA, ANDHRA PRADESH - 523157.

Approved by AICTE, Affiliated to JNTUK, Kakinada.

(ISO 9001:2008 Certified Institution)

## STUDENT'S FEEDBACK FORM ON CURRICULUM

Academic year	Course Year	Semester	Branch
2022-23	IV	II	ECE

S.NO.	ATTRIBUTES/PARAMETERS	Excellent	Very Good	Good	Average	Poor
1	Rate the syllabus you studied in relation to the competencies required from the courses.	✓				
2	The credit allotment for the course is appropriate.			✓		
3	The depth of the course content is appropriate in relation to the intended course outcomes (COs).		✓			
4	The syllabus's modules are properly ordered.	✓				
5	The curriculum helped me increase my abilities to develop, analyze, and solve problems.			✓		
6	Rate the evaluation scheme created for each course.		✓			
7	The course materials are readily available.	✓				
8	Calculate the proportion (%) of courses that have lab components.		✓			
9	The laboratory trials improved conceptual knowledge and allowed for the connection of theory to practice (Experiential Learning).			✓		
10	The entire syllabus was completed in the class by the teacher		✓			
11	Comments/Suggestions if any:					



where professionalism speaks

# CHIRALA ENGINEERING COLLEGE

RAMAPURAM BEACH ROAD, CHIRALA, ANDHRA PRADESH - 523157.

Approved by AICTE, Affiliated to JNTUK, Kakinada.

(ISO 9001:2008 Certified Institution)

## STUDENT'S FEEDBACK FORM ON CURRICULUM

Academic year	Course Year	Semester	Branch
2022 - 23	IV	II	ECE

S.NO.	ATTRIBUTES/PARAMETERS	Excellent	Very Good	Good	Average	Poor
1	Rate the syllabus you studied in relation to the competencies required from the courses.		✓			
2	The credit allotment for the course is appropriate.	✓				
3	The depth of the course content is appropriate in relation to the intended course outcomes (COs).		✓			
4	The syllabus's modules are properly ordered.			✓		
5	The curriculum helped me increase my abilities to develop, analyze, and solve problems.	✓				
6	Rate the evaluation scheme created for each course.		✓			
7	The course materials are readily available.		✓			
8	Calculate the proportion (%) of courses that have lab components.	✓				
9	The laboratory trials improved conceptual knowledge and allowed for the connection of theory to practice (Experiential Learning).			✓		
10	The entire syllabus was completed in the class by the teacher	✓				
11	Comments/Suggestions if any:					



where professionalism speaks

# CHIRALA ENGINEERING COLLEGE

RAMAPURAM BEACH ROAD, CHIRALA, ANDHRA PRADESH - 523157.

Approved by AICTE, Affiliated to JNTUK, Kakinada.

(ISO 9001:2008 Certified Institution)

## STUDENT'S FEEDBACK FORM ON CURRICULUM

Academic year	Course Year	Semester	Branch
2022 - 23	IV	II	ECE

S.NO.	ATTRIBUTES/PARAMETERS	Excellent	Very Good	Good	Average	Poor
1	Rate the syllabus you studied in relation to the competencies required from the courses.	✓				
2	The credit allotment for the course is appropriate.		✓			
3	The depth of the course content is appropriate in relation to the intended course outcomes (COs).			✓		
4	The syllabus's modules are properly ordered.	✓				
5	The curriculum helped me increase my abilities to develop, analyze, and solve problems.			✓		
6	Rate the evaluation scheme created for each course.			✓		
7	The course materials are readily available.	✓				
8	Calculate the proportion (%) of courses that have lab components.		✓			
9	The laboratory trials improved conceptual knowledge and allowed for the connection of theory to practice (Experiential Learning).	✓				
10	The entire syllabus was completed in the class by the teacher		✓			
11	Comments/Suggestions if any:					



where professionalism speaks

# CHIRALA ENGINEERING COLLEGE

RAMAPURAM BEACH ROAD, CHIRALA, ANDHRA PRADESH - 523157.

Approved by AICTE, Affiliated to JNTUK, Kakinada.

(ISO 9001:2008 Certified Institution)

## STUDENT'S FEEDBACK FORM ON CURRICULUM

Academic year	Course Year	Semester	Branch
2022-23	III	II	ECF

S.NO.	ATTRIBUTES/PARAMETERS	Excellent	Very Good	Good	Average	Poor
1	Rate the syllabus you studied in relation to the competencies required from the courses.	✓				
2	The credit allotment for the course is appropriate.		✓			
3	The depth of the course content is appropriate in relation to the intended course outcomes (COs).	✓				
4	The syllabus's modules are properly ordered.		✓			
5	The curriculum helped me increase my abilities to develop, analyze, and solve problems.	✓				
6	Rate the evaluation scheme created for each course.		✓			
7	The course materials are readily available.			✓		
8	Calculate the proportion (%) of courses that have lab components.		✓			
9	The laboratory trials improved conceptual knowledge and allowed for the connection of theory to practice (Experiential Learning).		✓			
10	The entire syllabus was completed in the class by the teacher	✓				
11	Comments/Suggestions if any:	Reviews question paper Experiments needed.				



where professionalism speaks

# CHIRALA ENGINEERING COLLEGE

RAMAPURAM BEACH ROAD, CHIRALA, ANDHRA PRADESH - 523157.

Approved by AICTE, Affiliated to JNTUK, Kakinada.

(ISO 9001:2008 Certified Institution)

## STUDENT'S FEEDBACK FORM ON CURRICULUM

Academic year	Course Year	Semester	Branch
2022-23	III	II	ECE

S.NO.	ATTRIBUTES/PARAMETERS	Excellent	Very Good	Good	Average	Poor
1	Rate the syllabus you studied in relation to the competencies required from the courses.	✓				
2	The credit allotment for the course is appropriate.		✓			
3	The depth of the course content is appropriate in relation to the intended course outcomes (COs).			✓		
4	The syllabus's modules are properly ordered.	✓				
5	The curriculum helped me increase my abilities to develop, analyze, and solve problems.	✓				
6	Rate the evaluation scheme created for each course.		✓			
7	The course materials are readily available.			✓		
8	Calculate the proportion (%) of courses that have lab components.	✓				
9	The laboratory trials improved conceptual knowledge and allowed for the connection of theory to practice (Experiential Learning).			✓		
10	The entire syllabus was completed in the class by the teacher	✓				
11	Comments/Suggestions if any:					





# CHIRALA ENGINEERING COLLEGE

RAMAPURAM BEACH ROAD, CHIRALA, ANDHRA PRADESH - 523157.

Approved by AICTE, Affiliated to JNTUK, Kakinada.

(ISO 9001:2008 Certified Institution)

## STUDENT'S FEEDBACK FORM ON CURRICULUM

Academic year	Program Year	Semester	Branch
2022-23	III	II	ECE

S.NO.	ATTRIBUTES/PARAMETERS	Excellent	Very Good	Good	Average	Poor
1	Rate the syllabus you studied in relation to the competencies required from the courses.	✓				
2	The credit allotment for the course is appropriate.			✓		
3	The depth of the course content is appropriate in relation to the intended course outcomes (COs).		✓			
4	The syllabus's modules are properly ordered.	✓				
5	The curriculum helped me increase my abilities to develop, analyze, and solve problems.		✓			
6	Rate the evaluation scheme created for each course.			✓		
7	The course materials are readily available.	✓				
8	Calculate the proportion (%) of courses that have lab components.			✓		
9	The laboratory trials improved conceptual knowledge and allowed for the connection of theory to practice (Experiential Learning).		✓			
10	The entire syllabus was completed in the class by the teacher	✓				
11	Comments/Suggestions if any:					



where professionalism speaks

# CHIRALA ENGINEERING COLLEGE

RAMAPURAM BEACH ROAD, CHIRALA, ANDHRA PRADESH - 523157.

Approved by AICTE, Affiliated to JNTUK, Kakinada.

(ISO 9001:2008 Certified Institution)

## STUDENT'S FEEDBACK FORM ON CURRICULUM

Academic year	Course Year	Semester	Branch
2022 - 23	III	II	ECE

S.NO.	ATTRIBUTES/PARAMETERS	Excellent	Very Good	Good	Average	Poor
1	Rate the syllabus you studied in relation to the competencies required from the courses.		✓			
2	The credit allotment for the course is appropriate.	✓				
3	The depth of the course content is appropriate in relation to the intended course outcomes (COs).			✓		
4	The syllabus's modules are properly ordered.	✓				
5	The curriculum helped me increase my abilities to develop, analyze, and solve problems.		✓			
6	Rate the evaluation scheme created for each course.		✓			
7	The course materials are readily available.			✓		
8	Calculate the proportion (%) of courses that have lab components.	✓				
9	The laboratory trials improved conceptual knowledge and allowed for the connection of theory to practice (Experiential Learning).		✓			
10	The entire syllabus was completed in the class by the teacher	✓				
11	Comments/Suggestions if any:					



where professionalism speaks

# CHIRALA ENGINEERING COLLEGE

RAMAPURAM BEACH ROAD, CHIRALA, ANDHRA PRADESH - 523157.

Approved by AICTE, Affiliated to JNTUK, Kakinada.

(ISO 9001:2008 Certified Institution)

## STUDENT'S FEEDBACK FORM ON CURRICULUM

Academic year	Course Year	Semester	Branch
2022 - 23	II	II	ECE

S.NO.	ATTRIBUTES/PARAMETERS	Excellent	Very Good	Good	Average	Poor
1	Rate the syllabus you studied in relation to the competencies required from the courses.		✓			
2	The credit allotment for the course is appropriate.	✓				
3	The depth of the course content is appropriate in relation to the intended course outcomes (COs).	✓				
4	The syllabus's modules are properly ordered.			✓		
5	The curriculum helped me increase my abilities to develop, analyze, and solve problems.		✓			
6	Rate the evaluation scheme created for each course.	✓				
7	The course materials are readily available.		✓			
8	Calculate the proportion (%) of courses that have lab components.			✓		
9	The laboratory trials improved conceptual knowledge and allowed for the connection of theory to practice (Experiential Learning).	✓				
10	The entire syllabus was completed in the class by the teacher		✓			
11	Comments/Suggestions if any:	Explanation on previous University question paper is need.				



where professionalism speaks

# CHIRALA ENGINEERING COLLEGE

RAMAPURAM BEACH ROAD, CHIRALA, ANDHRA PRADESH - 523157.

Approved by AICTE, Affiliated to JNTUK, Kakinada.

(ISO 9001:2008 Certified Institution)

## STUDENT'S FEEDBACK FORM ON CURRICULUM

Academic year	Course Year	Semester	Branch
2022-23	1	1	ECC

S.NO.	ATTRIBUTES/PARAMETERS	Excellent	Very Good	Good	Average	Poor
1	Rate the syllabus you studied in relation to the competencies required from the courses.	✓				
2	The credit allotment for the course is appropriate.		✓			
3	The depth of the course content is appropriate in relation to the intended course outcomes (COs).			✓		
4	The syllabus's modules are properly ordered.	✓				
5	The curriculum helped me increase my abilities to develop, analyze, and solve problems.			✓		
6	Rate the evaluation scheme created for each course.		✓			
7	The course materials are readily available.	✓				
8	Calculate the proportion (%) of courses that have lab components.			✓		
9	The laboratory trials improved conceptual knowledge and allowed for the connection of theory to practice (Experiential Learning).	✓				
10	The entire syllabus was completed in the class by the teacher		✓			
11	Comments/Suggestions if any:					



where professionalism speaks

# CHIRALA ENGINEERING COLLEGE

RAMAPURAM BEACH ROAD, CHIRALA, ANDHRA PRADESH - 523157.

Approved by AICTE, Affiliated to JNTUK, Kakinada.

(ISO 9001:2008 Certified Institution)

## STUDENT'S FEEDBACK FORM ON CURRICULUM

Academic year	Program Year	Semester	Branch
2022-23	II	II	ECE

S.NO.	ATTRIBUTES/PARAMETERS	Excellent	Very Good	Good	Average	Poor
1	Rate the syllabus you studied in relation to the competencies required from the courses.	✓				
2	The credit allotment for the course is appropriate.		✓			
3	The depth of the course content is appropriate in relation to the intended course outcomes (COs).			✓		
4	The syllabus's modules are properly ordered.	✓				
5	The curriculum helped me increase my abilities to develop, analyze, and solve problems.	✓				
6	Rate the evaluation scheme created for each course.		✓			
7	The course materials are readily available.	✓				
8	Calculate the proportion (%) of courses that have lab components.			✓		
9	The laboratory trials improved conceptual knowledge and allowed for the connection of theory to practice (Experiential Learning).		✓			
10	The entire syllabus was completed in the class by the teacher	✓				
11	Comments/Suggestions if any:					



# CHIRALA ENGINEERING COLLEGE

RAMAPURAM BEACH ROAD, CHIRALA, ANDHRA PRADESH - 523157.

Approved by AICTE, Affiliated to JNTUK, Kakinada.

(ISO 9001:2008 Certified Institution)

## STUDENT'S FEEDBACK FORM ON CURRICULUM

Academic year	Course Year	Semester	Branch
2022-23	II	II	ECE

S.NO.	ATTRIBUTES/PARAMETERS	Excellent	Very Good	Good	Average	Poor
1	Rate the syllabus you studied in relation to the competencies required from the courses.	✓				
2	The credit allotment for the course is appropriate.	✓				
3	The depth of the course content is appropriate in relation to the intended course outcomes (COs).		✓			
4	The syllabus's modules are properly ordered.	✓				
5	The curriculum helped me increase my abilities to develop, analyze, and solve problems.		✓			
6	Rate the evaluation scheme created for each course.	✓				
7	The course materials are readily available.		✓			
8	Calculate the proportion (%) of courses that have lab components.			✓		
9	The laboratory trials improved conceptual knowledge and allowed for the connection of theory to practice (Experiential Learning).	✓				
10	The entire syllabus was completed in the class by the teacher		✓			
11	Comments/Suggestions if any:					



# CHIRALA ENGINEERING COLLEGE

RAMAPURAM BEACH ROAD, CHIRALA, ANDHRA PRADESH - 523157.

Approved by AICTE, Affiliated to JNTUK, Kakinada.

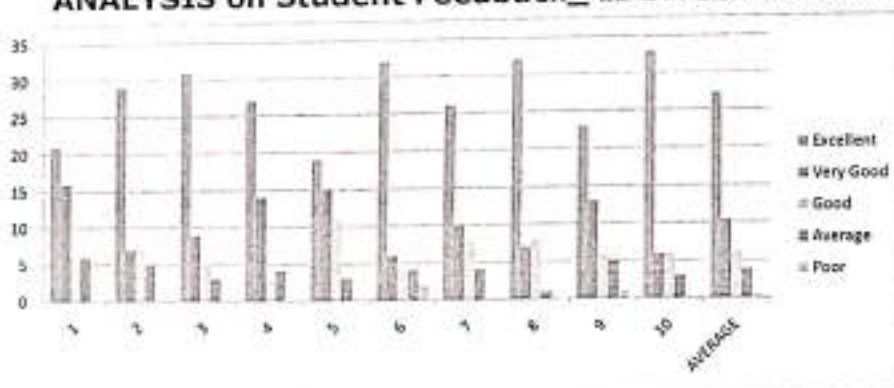
(ISO 9001:2008 Certified Institution)

## SUMMARY OF STUDENT'S FEEDBACK FORM ON CURRICULUM

Program Year	Year-Semester	Branch	Total No. Of Samples
2022 - 2023	II-II	ECE	48

S.NO.	ATTRIBUTES/PARAMETERS	Excellent	Very Good	Good	Average	Poor
1	Rate the syllabus you studied in relation to the competencies required from the courses.	21	16	5	6	
2	The credit allotment for the course is appropriate.	29	7	7	5	
3	The depth of the course content is appropriate in relation to the intended course outcomes (COs).	31	9	5	3	
4	The syllabus's modules are properly ordered.	27	14	3	4	
5	The curriculum helped me increase my abilities to develop, analyze, and solve problems.	19	15	11	3	
6	Rate the evaluation scheme created for each course.	32	6	4	4	2
7	The course materials are readily available.	26	10	8	4	
8	Calculate the proportion (%) of courses that have lab components.	32	7	8	1	
9	The laboratory trials improved conceptual knowledge and allowed for the connection of theory to practice (Experiential Learning).	23	13	6	5	1
10	The entire syllabus was completed in the class by the teacher	33	6	6	3	
AVERAGE		27.3	10.3	6.3	3.8	0.3

### ANALYSIS on Student Feedback\_ II B.Tech-II Semester AY 2022-2023



  
 Head of the Department  
 Department of E.C.E  
 CHIRALA ENGINEERING COLLEGE  
 CHIRALA-523157



  
 Principal  
 PRINCIPAL  
 CHIRALA ENGINEERING COLLEGE  
 CHIRALA



where professionalism speaks

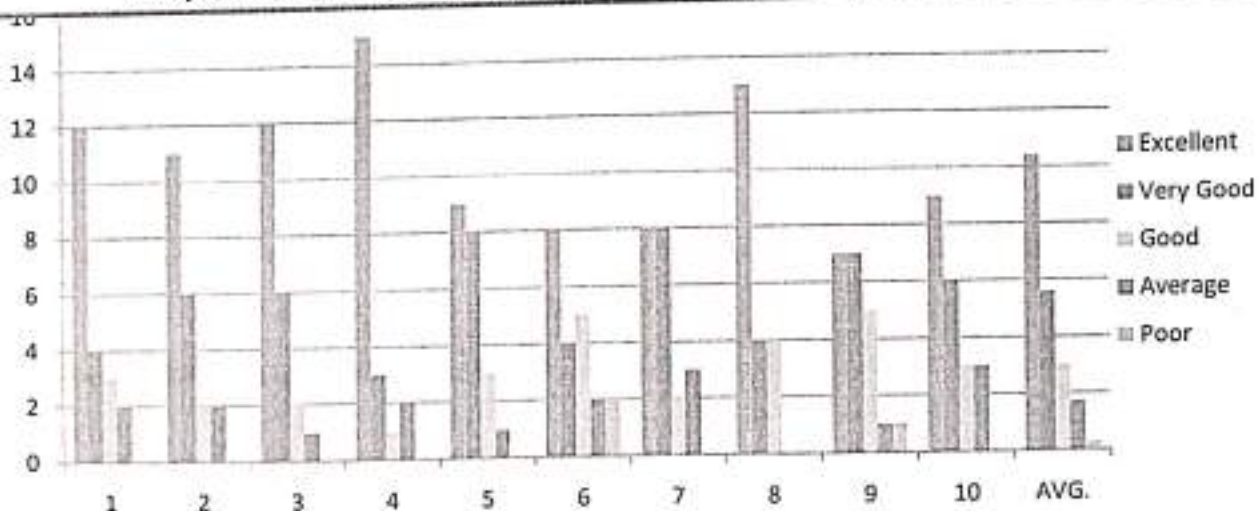
**CHIRALA ENGINEERING COLLEGE**  
 RAMAPURAM BEACH ROAD, CHIRALA, ANDHRA PRADESH - 523157.  
 Approved by AICTE, Affiliated to JNTUK, Kakinada.  
 (ISO 9001:2008 Certified Institution)

**SUMMARY OF STUDENT'S FEEDBACK FORM ON CURRICULUM**

Program Year	Year-Semester	Branch	Total No. Of Samples
2022 - 2023	III-II	ECE	21

S.NO.	ATTRIBUTES/PARAMETERS	Excellent	Very Good	Good	Average	Poor
1	Rate the syllabus you studied in relation to the competencies required from the courses.	12	4	3	2	
2	The credit allotment for the course is appropriate.	11	6	2	2	
3	The depth of the course content is appropriate in relation to the intended course outcomes (COs).	12	6	2	1	
4	The syllabus's modules are properly ordered.	15	3	1	2	
5	The curriculum helped me increase my abilities to develop, analyze, and solve problems.	9	8	3	1	
6	Rate the evaluation scheme created for each course.	8	4	5	2	2
7	The course materials are readily available.	8	8	2	3	
8	Calculate the proportion (%) of courses that have lab components.	13	4	4		
9	The laboratory trials improved conceptual knowledge and allowed for the connection of theory to practice (Experiential Learning).	7	7	5	1	1
10	The entire syllabus was completed in the class by the teacher	9	6	3	3	
	AVERAGE	10.4	5.6	3	1.7	0.3

Analysis on student feedback\_III B.Tech-II Semester For A.Y\_2022-2023



*[Signature]*  
 Head of the Department  
 Department of E.C.E  
 CHIRALA ENGINEERING COLLEGE  
 CHIRALA-523157



*[Signature]*  
 Principal  
 CHIRALA ENGINEERING COLLEGE  
 CHIRALA





where professionalism speaks

# CHIRALA ENGINEERING COLLEGE

RAMAPURAM BEACH ROAD, CHIRALA, ANDHRA PRADESH - 523157.

Approved by AICTE, Affiliated to JNTUK, Kakinada.

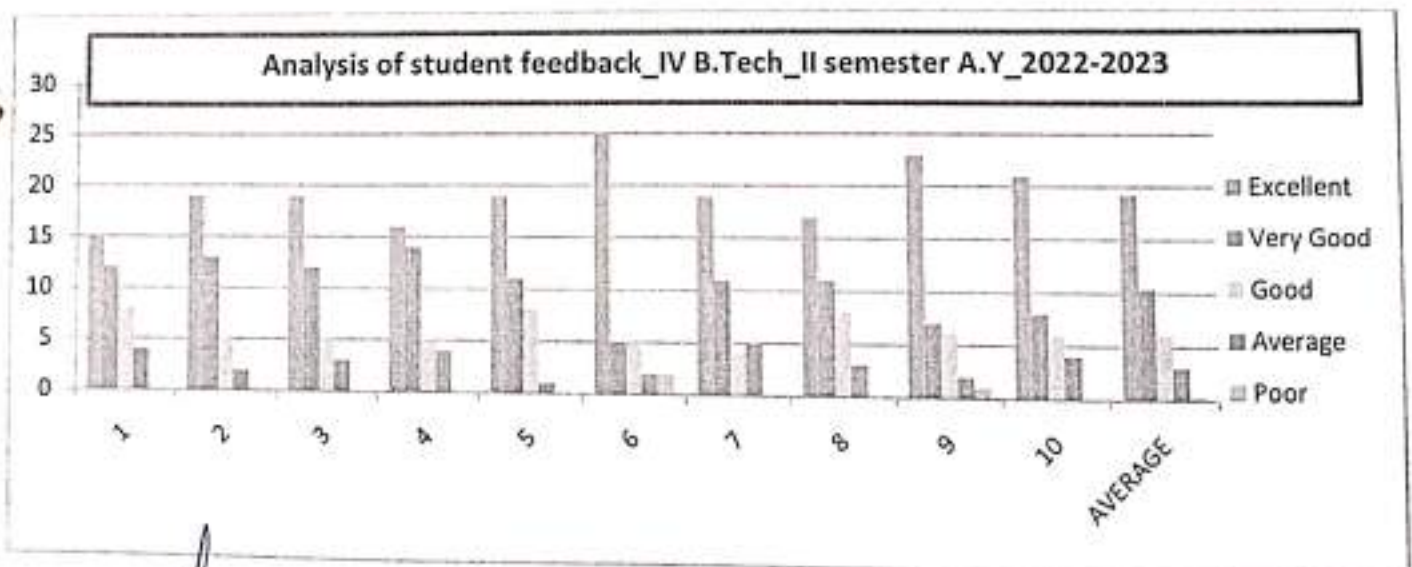
(ISO 9001:2008 Certified Institution)

## SUMMARY OF STUDENT'S FEEDBACK FORM ON CURRICULUM

Program Year	Year-Semester	Branch	Total No. Of Samples		
2022 - 2023	IV-II	ECE	39		

S.NO.	ATTRIBUTES/PARAMETERS	Excellent	Very Good	Good	Average	Poor
1	Rate the syllabus you studied in relation to the competencies required from the courses.	15	12	8	4	
2	The credit allotment for the course is appropriate.	19	13	5	2	
3	The depth of the course content is appropriate in relation to the intended course outcomes (COs).	19	12	5	3	
4	The syllabus's modules are properly ordered.	16	14	5	4	
5	The curriculum helped me increase my abilities to develop, analyze, and solve problems.	19	11	8	1	
6	Rate the evaluation scheme created for each course.	25	5	5	2	2
7	The course materials are readily available.	19	11	4	5	
8	Calculate the proportion (%) of courses that have lab components.	17	11	8	3	
9	The laboratory trials improved conceptual knowledge and allowed for the connection of theory to practice (Experiential Learning).	23	7	6	2	1
10	The entire syllabus was completed in the class by the teacher	21	8	6	4	
AVERAGE		19.3	10.4	6	3	0.3



  
 Head of the Department  
 Department of E.C.E  
 CHIRALA ENGINEERING COLLEGE  
 CHIRALA-523157



  
 Principal  
 CHIRALA ENGINEERING COLLEGE  
 CHIRALA



# CHIRALA ENGINEERING COLLEGE

RAMAPURAM BEACH ROAD, CHIRALA, Andhra Pradesh - 523157.

Approved by AICTE, Affiliated to JNTUK, Kakinada.

(ISO 9001:2008 Certified Institution)

## TEACHERS FEEDBACK ON CURRICULUM (A.Y-2022-2023)

The questionnaire is intended to collect information relating to your satisfaction towards the curriculum, learning and evaluation. The information provided by you will be kept confidential and will be used as feedback for quality improvement of the program of studies/institution.

Directions: a score for each item please indicate your level of satisfaction with the following statement by choosing between 1 and 5.

\*Rating score: Excellent (5), Very Good(4), Good(3), Average (2), Below Average(1)  
State what you would like to change for the improvement of the curriculum: \_\_\_\_\_

S No	Curriculum, Teaching, Learning and Evaluation	5	4	3	2	1
1.	Curriculum and Syllabus are need based	✓				
2.	The course outcomes are well defined and clear.		✓			
3.	Sufficient number of relevant reading materials and digital resources are available in the Library	✓				
4.	The course has good balance between theory and application.		✓			
5.	The syllabus of this course increased my knowledge and perspective in the subject area.		✓			
6.	I am able to achieve the minimum required course outcome attainment level for my class	✓				
7.	I have taken sufficient steps to provide assistance to slow learners	✓				
8.	I have contributed to the curriculum and/or syllabus development.	✓				
9.	I have the freedom to propose, modify, suggest and incorporate new topics in the syllabus through proper forum.		✓			
10.	I have the freedom to adopt new techniques/education tools strategies in teaching.		✓			

Your suggestions: All activities of Academic process good



where professionalism speaks

# CHIRALA ENGINEERING COLLEGE

RAMAPURAM BEACH ROAD, CHIRALA, Andhra Pradesh – 523157.

Approved by AICTE, Affiliated to JNTUK, Kakinada.

(ISO 9001:2008 Certified Institution)

## TEACHERS FEEDBACK ON CURRICULUM (A.Y-2022-2023)

The questionnaire is intended to collect information relating to your satisfaction towards the curriculum, learning and evaluation. The information provided by you will be kept confidential and will be used as feedback for quality improvement of the program of studies/institution.

Directions: a score for each item please indicate your level of satisfaction with the following statement by choosing between 1 and 5.

\*Rating score: Excellent (5), Very Good(4), Good(3), Average (2), Below Average(1)

State what you would like to change for the improvement of the curriculum: \_\_\_\_\_

S No	Curriculum, Teaching, Learning and Evaluation	5	4	3	2	1
1.	Curriculum and Syllabus are need based	✓				
2.	The course outcomes are well defined and clear.	✓				
3.	Sufficient number of relevant reading materials and digital resources are available in the Library	✓				
4.	The course has good balance between theory and application.		✓			
5.	The syllabus of this course increased my knowledge and perspective in the subject area.	✓				
6.	I am able to achieve the minimum required course outcome attainment level for my class			✓		
7.	I have taken sufficient steps to provide assistance to slow learners		✓			
8.	I have contributed to the curriculum and/or syllabus development.			✓		
9.	I have the freedom to propose, modify, suggest and incorporate new topics in the syllabus through proper forum.				✓	
10.	I have the freedom to adopt new techniques/education tools strategies in teaching.	✓				

Your suggestions: Good curriculum, need some real life real time practical topics in syllabus. overall good and decent curriculum.



where professionalism speaks

# CHIRALA ENGINEERING COLLEGE

RAMAPURAM BEACH ROAD, CHIRALA, Andhra Pradesh - 523157.

Approved by AICTE, Affiliated to JNTUK, Kakinada.

(ISO 9001:2008 Certified Institution)

## TEACHERS FEEDBACK ON CURRICULUM (A.Y-2022-2023)

The questionnaire is intended to collect information relating to your satisfaction towards the curriculum, learning and evaluation. The information provided by you will be kept confidential and will be used as feedback for quality improvement of the program of studies/institution.

Directions: a score for each item please indicate your level of satisfaction with the following statement by choosing between 1 and 5.

\*Rating score: Excellent (5), Very Good(4), Good(3), Average (2), Below Average(1)

State what you would like to change for the improvement of the curriculum: \_\_\_\_\_

S No	Curriculum, Teaching, Learning and Evaluation	5	4	3	2	1
1.	Curriculum and Syllabus are need based	✓				
2.	The course outcomes are well defined and clear.		✓			
3.	Sufficient number of relevant reading materials and digital resources are available in the Library			✓		
4.	The course has good balance between theory and application.				✓	
5.	The syllabus of this course increased my knowledge and perspective in the subject area.		✓			
6.	I am able to achieve the minimum required course outcome attainment level for my class	✓				
7.	I have taken sufficient steps to provide assistance to slow learners		✓			
8.	I have contributed to the curriculum and/or syllabus development.			✓		
9.	I have the freedom to propose, modify, suggest and incorporate new topics in the syllabus through proper forum.	✓				
10.	I have the freedom to adopt new techniques/education tools strategies in teaching.	✓				

Your suggestions: Need to introduce Advanced Courses



where professionalism speaks

# CHIRALA ENGINEERING COLLEGE

RAMAPURAM BEACH ROAD, CHIRALA, Andhra Pradesh – 523157.

Approved by AICTE, Affiliated to JNTUK, Kakinada.

(ISO 9001:2008 Certified Institution)

## TEACHERS FEEDBACK ON CURRICULUM (A.Y-2022-2023)

The questionnaire is intended to collect information relating to your satisfaction towards the curriculum, learning and evaluation. The information provided by you will be kept confidential and will be used as feedback for quality improvement of the program of studies/institution.

Directions: a score for each item please indicate your level of satisfaction with the following statement by choosing between 1 and 5.

\*Rating score: Excellent (5), Very Good(4), Good(3), Average (2), Below Average(1)

State what you would like to change for the improvement of the curriculum: \_\_\_\_\_

S No	Curriculum, Teaching, Learning and Evaluation	5	4	3	2	1
1.	Curriculum and Syllabus are need based		/			
2.	The course outcomes are well defined and clear.	/				
3.	Sufficient number of relevant reading materials and digital resources are available in the Library		/			
4.	The course has good balance between theory and application.			/		
5.	The syllabus of this course increased my knowledge and perspective in the subject area.	/				
6.	I am able to achieve the minimum required course outcome attainment level for my class	/				
7.	I have taken sufficient steps to provide assistance to slow learners		/			
8.	I have contributed to the curriculum and/or syllabus development.		/			
9.	I have the freedom to propose, modify, suggest and incorporate new topics in the syllabus through proper forum.	/				
10.	I have the freedom to adopt new techniques/education tools strategies in teaching.	/				

Your suggestions: \_\_\_\_\_



where professionalism speaks

# CHIRALA ENGINEERING COLLEGE

RAMAPURAM BEACH ROAD, CHIRALA, Andhra Pradesh - 523157.

Approved by AICTE, Affiliated to JNTUK, Kakinada.

(ISO 9001:2008 Certified Institution)

## TEACHERS FEEDBACK ON CURRICULUM (A.Y-2022-2023)

The questionnaire is intended to collect information relating to your satisfaction towards the curriculum, learning and evaluation. The information provided by you will be kept confidential and will be used as feedback for quality improvement of the program of studies/institution.

Directions: a score for each item please indicate your level of satisfaction with the following statement by choosing between 1 and 5.

\*Rating score: Excellent (5), Very Good(4), Good(3), Average (2), Below Average(1)

State what you would like to change for the improvement of the curriculum: \_\_\_\_\_

S No	Curriculum, Teaching, Learning and Evaluation	5	4	3	2	1
1.	Curriculum and Syllabus are need based	✓				
2.	The course outcomes are well defined and clear.	✓				
3.	Sufficient number of relevant reading materials and digital resources are available in the Library		✓			
4.	The course has good balance between theory and application.			✓		
5.	The syllabus of this course increased my knowledge and perspective in the subject area.		✓			
6.	I am able to achieve the minimum required course outcome attainment level for my class	✓				
7.	I have taken sufficient steps to provide assistance to slow learners		✓			
8.	I have contributed to the curriculum and/or syllabus development.	✓				
9.	I have the freedom to propose, modify, suggest and incorporate new topics in the syllabus through proper forum.	✓				
10.	I have the freedom to adopt new techniques/education tools strategies in teaching.		✓			

Your suggestions: \_\_\_\_\_



where professionalism speaks

# CHIRALA ENGINEERING COLLEGE

RAMAPURAM BEACH ROAD, CHIRALA, Andhra Pradesh – 523157.

Approved by AICTE, Affiliated to JNTUK, Kakinada.

(ISO 9001:2008 Certified Institution)

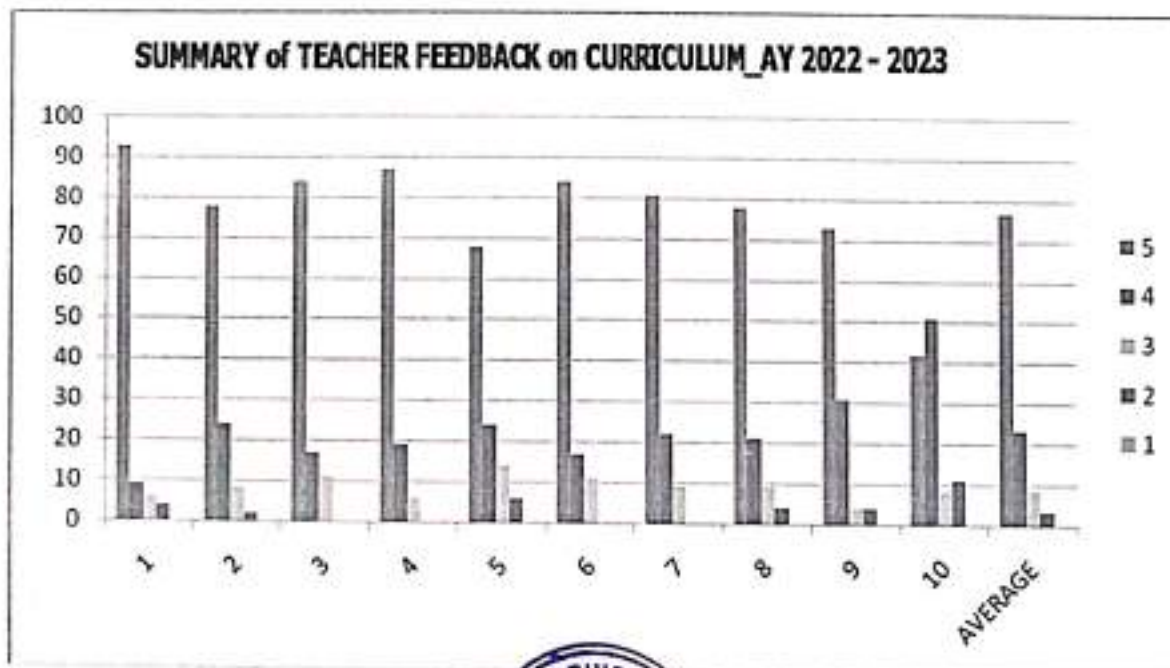
## SUMMARY of TEACHER FEEDBACK ON CURRICULUM (A.Y-2022-2023)

The questionnaire is intended to collect information relating to your satisfaction towards the curriculum, learning and evaluation. The information provided by you will be kept confidential and will be used as feedback for quality improvement of the program of studies/institution.

Directions: a score for each item please indicate your level of satisfaction with the following statement by choosing between 1 and 5.

\*Rating score: Excellent (5), Very Good(4), Good(3), Average (2), Below Average(1)

S No	Curriculum, Teaching, Learning and Evaluation	5	4	3	2	1
1.	Curriculum and Syllabus are need based	93	9	6	4	
2.	The course outcomes are well defined and clear.	78	24	8	2	
3.	Sufficient number of relevant reading materials and digital resources are available in the Library	84	17	11		
4.	The course has good balance between theory and application.	87	19	6		
5.	The syllabus of this course increased my knowledge and perspective in the subject area.	68	24	14	6	
6.	I am able to achieve the minimum required course outcome attainment level for my class	84	17	11		
7.	I have taken sufficient steps to provide assistance to slow learners	81	22	9		
8.	I have contributed to the curriculum and/or syllabus development.	78	21	9	4	
9.	I have the freedom to propose, modify, suggest and incorporate new topics in the syllabus through proper forum.	73	31	4	4	
10.	I have the freedom to adopt new techniques/education tools strategies in teaching.	42	51	8	11	
	AVERAGE	76.8	23.5	8.6	3.1	0



*Kanwar*  
Principal  
CHIRALA ENGINEERING COLLEGE  
CHIRALA,



# CHIRALA ENGINEERING COLLEGE

RAMAPURAM BEACH ROAD, CHIRALA, ANDHRA PRADESH - 523157.

Approved by AICTE, Affiliated to JNTUK, Kakinada.

(ISO 9001:2008 Certified Institution)

## EMPLOYER/INDUSTRY FEEDBACK FOR THE A.Y:2022-2023

Many graduates from our institute are already working in your organization. We are thankful to you for providing them employment with your esteemed organization. We appreciate if you can share your valuable time to fill up this feedback form. It will help us to improve the Institute further and provide you better employees in future.

\*Rating score: Excellent (5), Very Good (4), Good (3), Average (2), Below Average (1)

S.NO.	ATTRIBUTES	5	4	3	2	1
1.	How do you rate the technical knowledge of the students?	✓				
2.	How do you rate the relevance of the curriculum for employability?	✓				
3.	How do you rate the students' ability to work in teams?	✓				
4.	How do you rate the students managerial and leadership qualities?		✓			
5.	How do you rate the students' ability to learn and mould themselves in the industrial practices?		✓			
6.	How do you rate the students' contribution to the growth of industries?			✓		
7.	How do you rate the communication skills of the students?	✓				
8.	How do you rate the offering of electives in relation to the technological advancements?					✓
9.	How do you rate the training and placement support in the curriculum?		✓			
10.	How do you rate the overall learning ambience of the college?	✓				

Your suggestions if any for improvement in the curriculum: More benefits need to be given





where professionalism speaks

# CHIRALA ENGINEERING COLLEGE

RAMAPURAM BEACH ROAD, CHIRALA, ANDHRA PRADESH - 523157.

Approved by AICTE, Affiliated to JNTUK, Kakinada.

(ISO 9001:2008 Certified Institution)

## EMPLOYER/INDUSTRY FEEDBACK FOR THE A.Y:2022-2023

Many graduates from our institute are already working in your organization. We are thankful to you for providing them employment with your esteemed organization. We appreciate if you can share your valuable time to fill up this feedback form. It will help us to improve the Institute further and provide you better employees in future.

\*Rating score: Excellent (5), Very Good (4), Good (3), Average (2), Below Average (1)

S.NO.	ATTRIBUTES	5	4	3	2	1
1.	How do you rate the technical knowledge of the students?	✓				
2.	How do you rate the relevance of the curriculum for employability?		✓			
3.	How do you rate the students' ability to work in teams?			✓		
4.	How do you rate the students managerial and leadership qualities?			✓		
5.	How do you rate the students' ability to learn and mould themselves in the industrial practices?				✓	
6.	How do you rate the students' contribution to the growth of industries?		✓			
7.	How do you rate the communication skills of the students?				✓	
8.	How do you rate the offering of electives in relation to the technological advancements?			✓		
9.	How do you rate the training and placement support in the curriculum?	✓				
10.	How do you rate the overall learning ambience of the college?	✓				

Your suggestions if any for improvement in the curriculum: Good Learning Environment



# CHIRALA ENGINEERING COLLEGE

RAMAPURAM BEACH ROAD, CHIRALA, ANDHRA PRADESH - 523157.

Approved by AICTE, Affiliated to JNTUK, Kakinada.

(ISO 9001:2008 Certified Institution)

## EMPLOYER/INDUSTRY FEEDBACK FOR THE A.Y:2022-2023

Many graduates from our institute are already working in your organization. We are thankful to you for providing them employment with your esteemed organization. We appreciate if you can share your valuable time to fill up this feedback form. It will help us to improve the Institute further and provide you better employees in future.

\*Rating score: Excellent (5), Very Good (4), Good (3), Average (2), Below Average (1)

S.NO.	ATTRIBUTES	5	4	3	2	1
1.	How do you rate the technical knowledge of the students?	✓				
2.	How do you rate the relevance of the curriculum for employability?		✓			
3.	How do you rate the students' ability to work in teams?	✓				
4.	How do you rate the students managerial and leadership qualities?	✓				
5.	How do you rate the students' ability to learn and mould themselves in the industrial practices?		✓			
6.	How do you rate the students' contribution to the growth of industries?	✓				
7.	How do you rate the communication skills of the students?	✓				
8.	How do you rate the offering of electives in relation to the technological advancements?		✓			
9.	How do you rate the training and placement support in the curriculum?			✓		
10.	How do you rate the overall learning ambience of the college?		✓			

Your suggestions if any for improvement in the curriculum: \_\_\_\_\_



where professionalism speaks

# CHIRALA ENGINEERING COLLEGE

RAMAPURAM BEACH ROAD, CHIRALA, ANDHRA PRADESH - 523157.

Approved by AICTE, Affiliated to JNTUK, Kakinada.

(ISO 9001:2008 Certified Institution)

## EMPLOYER/INDUSTRY FEEDBACK FOR THE A.Y:2022-2023

Many graduates from our institute are already working in your organization. We are thankful to you for providing them employment with your esteemed organization. We appreciate if you can share your valuable time to fill up this feedback form. It will help us to improve the Institute further and provide you better employees in future.

\*Rating score: Excellent (5), Very Good (4), Good (3), Average (2), Below Average (1)

S.NO.	ATTRIBUTES	5	4	3	2	1
1.	How do you rate the technical knowledge of the students?	✓				
2.	How do you rate the relevance of the curriculum for employability?		✓			
3.	How do you rate the students' ability to work in teams?		✓			
4.	How do you rate the students managerial and leadership qualities?		✓			
5.	How do you rate the students' ability to learn and mould themselves in the industrial practices?	✓				
6.	How do you rate the students' contribution to the growth of industries?	✓				
7.	How do you rate the communication skills of the students?	✓				
8.	How do you rate the offering of electives in relation to the technological advancements?		✓			
9.	How do you rate the training and placement support in the curriculum?		✓			
10.	How do you rate the overall learning ambience of the college?	✓				

Your suggestions if any for improvement in the curriculum: Conduct CRT on  
New Software Languages



# CHIRALA ENGINEERING COLLEGE

RAMAPURAM BEACH ROAD, CHIRALA, ANDHRA PRADESH - 523157.

Approved by AICTE, Affiliated to JNTUK, Kakinada.

(ISO 9001:2008 Certified Institution)

## EMPLOYER/INDUSTRY FEEDBACK FOR THE A.Y:2022-2023

Many graduates from our institute are already working in your organization. We are thankful to you for providing them employment with your esteemed organization. We appreciate if you can share your valuable time to fill up this feedback form. It will help us to improve the Institute further and provide you better employees in future.

\*Rating score: Excellent (5), Very Good (4), Good (3), Average (2), Below Average (1)

S.NO.	ATTRIBUTES	5	4	3	2	1
1.	How do you rate the technical knowledge of the students?	✓				
2.	How do you rate the relevance of the curriculum for employability?		✓			
3.	How do you rate the students' ability to work in teams?		✓			
4.	How do you rate the students managerial and leadership qualities?		✓			
5.	How do you rate the students' ability to learn and mould themselves in the industrial practices?		✓			
6.	How do you rate the students' contribution to the growth of industries?	✓				
7.	How do you rate the communication skills of the students?	✓				
8.	How do you rate the offering of electives in relation to the technological advancements?	✓				
9.	How do you rate the training and placement support in the curriculum?		✓			
10.	How do you rate the overall learning ambience of the college?		✓			

Your suggestions if any for improvement in the curriculum: \_\_\_\_\_



where professionalism speaks

# CHIRALA ENGINEERING COLLEGE

RAMAPURAM BEACH ROAD, CHIRALA, ANDHRA PRADESH - 523157.

Approved by AICTE, Affiliated to JNTUK, Kakinada.

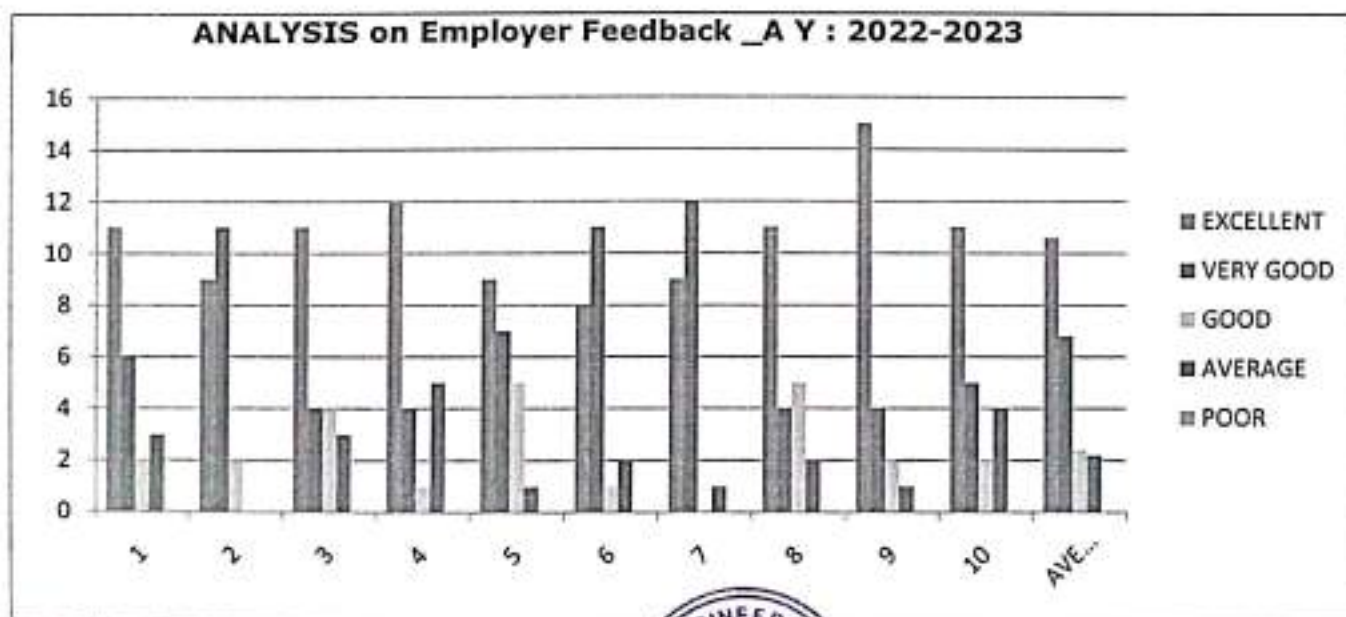
(ISO 9001:2008 Certified Institution)

## SUMMARY OF EMPLOYER/INDUSTRY FEEDBACK

Employer feedback is collected and analyzed taken on curriculum designed by JNTUK. We have received total 22 employer feedback from department of electronics and communication engineering for the Academic year 2022-2023.

S.NO.	ATTRIBUTES	5	4	3	2	1
1.	How do you rate the technical knowledge of the students?	11	6	2	3	
2.	How do you rate the relevance of the curriculum for employability?	9	11	2		
3.	How do you rate the students' ability to work in teams?	11	4	4	3	
4.	How do you rate the students managerial and leadership qualities?	12	4	1	5	
5.	How do you rate the students' ability to learn and mould themselves in the industrial practices?	9	7	5	1	
6.	How do you rate the students' contribution to the growth of industries?	8	11	1	2	
7.	How do you rate the communication skills of the students?	9	12		1	
8.	How do you rate the offering of electives in relation to the technological advancements?	11	4	5	2	
9.	How do you rate the training and placement support in the curriculum?	15	4	2	1	
10.	How do you rate the overall learning ambience of the college?	11	5	2	4	
Average		10.6	6.8	2.4	2.2	0

**ANALYSIS on Employer Feedback \_A Y : 2022-2023**



*[Signature]*  
Principal  
CHIRALA ENGINEERING COLLEGE  
CHIRALA.



# CHIRALA ENGINEERING COLLEGE

RAMAPURAM BEACH ROAD, CHIRALA, Andhra Pradesh - 523157.

Approved by AICTE, Affiliated to JNTUK, Kakinada.

(ISO 9001:2008 Certified Institution)

## ALUMNI FEEDBACK ON CURRICULUM (A.Y-2022-2023)

This feedback on Curriculum, Teaching, Learning and Evaluation is intended to collect information to obtain alumni input on the quality of education they received and the level of preparation they had at University. The purpose of this survey is to assess the quality of the academic program. We seek your help in completing this survey.

\*Rating score: Excellent (5), Very Good(4), Good(3), Average (2), Below Average(1)

S No	Questionnaire	5	4	3	2	1
1.	How do you rate the appropriateness of curriculum and syllabus content for your placement/higher education?	✓				
2.	How do you rate co-curricular activities arranged during your study period?	✓				
3.	How do you rate the availability of relevant reading materials and digital resources in the Library?	✓				
4.	How do you rate the usefulness of institute-Industry tie ups?		✓			
5.	How do you rate experiential learning (hands-on) of the courses?		✓			
6.	How do you rate the transparency of the academic processes of the institute?		✓			
7.	How do you rate the academic initiatives undertaken for the benefit of students?			✓		
8.	How do you rate the improvement of your inter and intra personal skills during your study period?			✓		
9.	How do you rate the training and placement support in the curriculum?		✓			
10.	How do you rate the learning ambience of the college?		✓			

Any Suggestions: Very Nice college. Helped me to achieve my goals.



# CHIRALA ENGINEERING COLLEGE

RAMAPURAM BEACH ROAD, CHIRALA, Andhra Pradesh - 523157.

Approved by AICTE, Affiliated to JNTUK, Kakinada.

(ISO 9001:2008 Certified Institution)

## ALUMNI FEEDBACK ON CURRICULUM (A.Y-2022-2023)

This feedback on Curriculum, Teaching, Learning and Evaluation is intended to collect information to obtain alumni input on the quality of education they received and the level of preparation they had at University. The purpose of this survey is to assess the quality of the academic program. We seek your help in completing this survey.

\*Rating score: Excellent (5), Very Good(4), Good(3), Average (2), Below Average(1)

S No	Questionnaire	5	4	3	2	1
1.	How do you rate the appropriateness of curriculum and syllabus content for your placement/higher education?	✓				
2.	How do you rate co-curricular activities arranged during your study period?		/			
3.	How do you rate the availability of relevant reading materials and digital resources in the Library?	✓				
4.	How do you rate the usefulness of institute-industry tie ups?			✓		
5.	How do you rate experiential learning (hands-on) of the courses?		✓			
6.	How do you rate the transparency of the academic processes of the institute?	✓				
7.	How do you rate the academic initiatives undertaken for the benefit of students?			✓		
8.	How do you rate the improvement of your inter and intra personal skills during your study period?	✓				
9.	How do you rate the training and placement support in the curriculum?	✓				
10.	How do you rate the leaning ambience of the college?		✓			

Any Suggestions: \_\_\_\_\_



# CHIRALA ENGINEERING COLLEGE

RAMAPURAM BEACH ROAD, CHIRALA, Andhra Pradesh - 523157.

Approved by AICTE, Affiliated to JNTUK, Kakinada.

(ISO 9001:2008 Certified Institution)

## ALUMNI FEEDBACK ON CURRICULUM (A.Y-2022-2023)

This feedback on Curriculum, Teaching, Learning and Evaluation is intended to collect information to obtain alumni input on the quality of education they received and the level of preparation they had at University. The purpose of this survey is to assess the quality of the academic program. We seek your help in completing this survey.

\*Rating score: Excellent (5), Very Good(4), Good(3), Average (2), Below Average(1)

S No	Questionnaire	5	4	3	2	1
1.	How do you rate the appropriateness of curriculum and syllabus content for your placement/higher education?	✓				
2.	How do you rate co-curricular activities arranged during your study period?		✓			
3.	How do you rate the availability of relevant reading materials and digital resources in the Library?	✓				
4.	How do you rate the usefulness of institute-industry tie ups?		✓			
5.	How do you rate experiential learning (hands-on) of the courses?	✓				
6.	How do you rate the transparency of the academic processes of the institute?		✓			
7.	How do you rate the academic initiatives undertaken for the benefit of students?		✓			
8.	How do you rate the improvement of your inter and intra personal skills during your study period?		✓			
9.	How do you rate the training and placement support in the curriculum?		✓			
10.	How do you rate the learning ambience of the college?	✓				

Any Suggestions: \_\_\_\_\_

\_\_\_\_\_



 <p>where professionalism speaks</p>	<h2>CHIRALA ENGINEERING COLLEGE</h2> <p>RAMAPURAM BEACH ROAD, CHIRALA, Andhra Pradesh – 523157.          Approved by AICTE, Affiliated to JNTUK, Kakinada.          (ISO 9001:2008 Certified Institution)</p>
---	---

### ALUMNI FEEDBACK ON CURRICULUM (A.Y-2022-2023)

This feedback on Curriculum, Teaching, Learning and Evaluation is intended to collect information to obtain alumni input on the quality of education they received and the level of preparation they had at University. The purpose of this survey is to assess the quality of the academic program. We seek your help in completing this survey.

\*Rating score: Excellent (5), Very Good(4), Good(3), Average (2), Below Average(1)

S No	Questionnaire	5	4	3	2	1
1.	How do you rate the appropriateness of curriculum and syllabus content for your placement/higher education?	✓				
2.	How do you rate co-curricular activities arranged during your study period?	✓				
3.	How do you rate the availability of relevant reading materials and digital resources in the Library?		✓			
4.	How do you rate the usefulness of institute-industry tie ups?			✓		
5.	How do you rate experiential learning (hands-on) of the courses?			✓		
6.	How do you rate the transparency of the academic processes of the institute?		✓			
7.	How do you rate the academic initiatives undertaken for the benefit of students?	✓				
8.	How do you rate the improvement of your inter and intra personal skills during your study period?	✓				
9.	How do you rate the training and placement support in the curriculum?		✓			
10.	How do you rate the learning ambience of the college?		✓			

Any Suggestions: \_\_\_\_\_

\_\_\_\_\_



# CHIRALA ENGINEERING COLLEGE

RAMAPURAM BEACH ROAD, CHIRALA, Andhra Pradesh - 523157.

Approved by AICTE, Affiliated to JNTUK, Kakinada.

(ISO 9001:2008 Certified Institution)

## ALUMNI FEEDBACK ON CURRICULUM (A.Y-2022-2023)

This feedback on Curriculum, Teaching, Learning and Evaluation is intended to collect information to obtain alumni input on the quality of education they received and the level of preparation they had at University. The purpose of this survey is to assess the quality of the academic program. We seek your help in completing this survey.

\*Rating score: Excellent (5), Very Good(4), Good(3), Average (2), Below Average(1)

S No	Questionnaire	5	4	3	2	1
1.	How do you rate the appropriateness of curriculum and syllabus content for your placement/higher education?			✓		
2.	How do you rate co-curricular activities arranged during your study period?	✓				
3.	How do you rate the availability of relevant reading materials and digital resources in the Library?	✓				
4.	How do you rate the usefulness of Institute-Industry tie ups?		✓			
5.	How do you rate experiential learning (hands-on) of the courses?	✓				
6.	How do you rate the transparency of the academic processes of the institute?		✓			
7.	How do you rate the academic initiatives undertaken for the benefit of students?	✓				
8.	How do you rate the improvement of your Inter and intra personal skills during your study period?		✓			
9.	How do you rate the training and placement support in the curriculum?	✓				
10.	How do you rate the learning ambience of the college?	✓				

Any Suggestions: Need to improve infrastructure



where professionalism speaks

# CHIRALA ENGINEERING COLLEGE

RAMAPURAM BEACH ROAD, CHIRALA, Andhra Pradesh – 523157.

Approved by AICTE, Affiliated to JNTUK, Kakinada.

(ISO 9001:2008 Certified Institution)

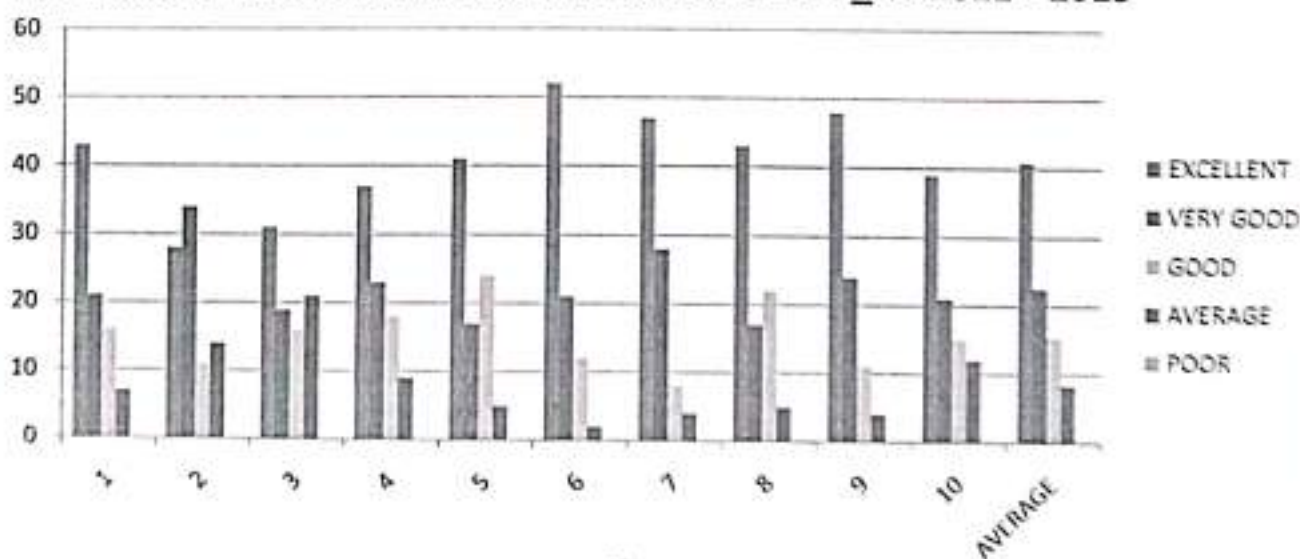
## SUMMARY of ALUMNI FEEDBACK ON CURRICULUM (A.Y-2022-2023)

This feedback on Curriculum, Teaching, Learning and Evaluation is intended to collect information to obtain alumni input on the quality of education they received and the level of preparation they had at University. The purpose of this survey is to assess the quality of the academic program. We seek your help in completing this survey

\*Rating score: Excellent (5), Very Good(4), Good(3), Average (2), Below Average(1)

S No	Questionnaire	5	4	3	2	1
1.	How do you rate the appropriateness of curriculum and syllabus content for your placement/higher education?	43	21	16	7	
2.	How do you rate co-curricular activities arranged during your study period?	28	34	11	14	
3.	How do you rate the availability of relevant reading materials and digital resources in the Library?	31	19	16	21	
4.	How do you rate the usefulness of institute-industry tie ups?	37	23	18	9	
5.	How do you rate experiential learning (hands-on) of the courses?	41	17	24	5	
6.	How do you rate the transparency of the academic processes of the institute?	52	21	12	2	
7.	How do you rate the academic initiatives undertaken for the benefit of students?	47	28	8	4	
8.	How do you rate the improvement of your inter and intra personal skills during your study period?	43	17	22	5	
9.	How do you rate the training and placement support in the curriculum?	48	24	11	4	
10.	How do you rate the leaning ambience of the college?	39	21	15	12	
	AVERAGE	40.9	22.5	15.3	8.3	0

## SUMMARY of ALUMNI FEEDBACK on CURRICULUM \_AY 2022 - 2023



*basu*  
Principal  
CHIRALA ENGINEERING COLLEGE  
CHIRALA.



where professionalism speaks

# CHIRALA ENGINEERING COLLEGE

RAMAPURAM BEACH ROAD, CHIRALA, ANDHRA PRADESH – 523157.

Approved by AICTE, Affiliated to JNTUK, Kakinada.

(ISO 9001:2008 Certified Institution)

## Department of Electronics and Communication Engineering

### **Student Feedback Analysis and Action taken on curriculum For The Academic Year: 2022 -2023**

Student Feedback Analysis	Actions Taken
<ol style="list-style-type: none"><li>95% were happy with credits assigned to the course. 91% agree that the depth of the course content is adequate in relation to the expected course outcomes (COs).</li><li>Feedback concluded that the units in the syllabus are properly sequenced from the majority view. 93% of the students agree that the syllabus enables students to improve their ability to formulate, analyze and solve problems.</li><li>Relevance of electives to the specialization chosen. 94% rate the electives offered matches with technological advancements. Majority of the students are happy with the evaluation scheme designed for each of the course. The course material is adequately available.</li><li>88 % of the students agree that the laboratory experiments enhanced the understanding of the concepts and enabled to relate theory to practice (Experiential Learning)</li><li>Use of digital boards for explanation rather than pdf Important questions to be discussed topic wise</li></ol>	<ul style="list-style-type: none"><li>Subject materials provided for Module Wise, Question Bank, Video lecture links are shared.</li><li>Students are encouraged to lead various Club activities for technical &amp; non-technical to enhance their Leadership qualities and improve communication skills.</li><li>Animated videos, different teaching tools (Jam board, digital board) and simulations are used.</li><li>Solutions and scheme of evaluation for previous year University question papers are shared and discussed.</li><li>Additional Laboratory sessions for lab experiments are conducted to enhance their practical knowledge.</li><li>T&amp;P cell is arranging training and helping the students to file a patent.</li><li>Students are encouraged and guided to write and publish a research paper of their project work.</li></ul>

  
Head of the Department  
Head of the Department  
Department of E.C.E  
CHIRALA ENGINEERING COLLEGE  
CHIRALA-523



  
Principal

PRINCIPAL  
CHIRALA ENGINEERING COLLEGE  
CHIRALA,



where professionalism speaks

## CHIRALA ENGINEERING COLLEGE

RAMAPURAM BEACH ROAD, CHIRALA, ANDHRA PRADESH - 523157.

Approved by AICTE, Affiliated to JNTUK, Kakinada.

(ISO 9001:2008 Certified Institution)

### Teacher's Feedback Analysis and Action taken on curriculum for Academic Year: 2022 -2023

Teacher's Feedback Analysis	Actions Taken
<ol style="list-style-type: none"><li>1. Introduce Web Resources for Knowledge Enhancement</li><li>2. Suggested students to participate in Skill Development Programs to sustain in Industry.</li><li>3. Students should be trained in Spoken English and Communication Skills.</li><li>4. Student must be encouraged to do Master's and Research in abroad and in premier institutions.</li><li>5. Improve the participation of students in co-curricular and extra-curricular activities in addition to academics.</li></ol>	<ul style="list-style-type: none"><li>• It is made mandatory for all faculties to upload the course material in MOODLE.</li><li>• Students were encouraged to register for Certification Courses.</li><li>• Students were apprised on the need of improving English Knowledge and also several add-on programs were conducted.</li><li>• Guided the students to prepare for GATE, CAT, GRE, etc and encouraged to strengthen the basic concepts.</li><li>• Motivated the students to join in NSS, NCC and participate in Sports competitions.</li></ul>



Principal

PRINCIPAL  
CHIRALA ENGINEERING COLLEGE  
CHIRALA.



where professionalism speaks

## CHIRALA ENGINEERING COLLEGE

RAMAPURAM BEACH ROAD, CHIRALA, ANDHRA PRADESH - 523157.

Approved by AICTE, Affiliated to JNTUK, Kakinada.

(ISO 9001:2008 Certified Institution)

### Employer Feedback Analysis and Action taken on curriculum for Academic Year: 2022 -2023

EMPLOYER Feedback Analysis	Actions Taken
1. Certification courses like JAVA, .dotnet, VLSI, IC designing and networking etc... can be made mandatory	<ul style="list-style-type: none"><li>Students are free to do the certification courses of their interest through NPTEL, or other OCW and it is proposed to allot 2 to 3 hours a week for this in time table. Minimum one certification should be done by each student through MOOCS.</li></ul>
2. Work towards developing communication skills	<ul style="list-style-type: none"><li>Communication skills Training is provided to students right from the first year.</li></ul>
3. Encourage students to improve coding skills and create awareness about latest technologies.	<ul style="list-style-type: none"><li>courses involving latest technologies are chosen from the list of open elective courses and workshops are conducted from time to time. Guest lectures are also arranged and Skill development courses are arranged.</li></ul>
4. Industrial visits may be increased to get more exposure	<ul style="list-style-type: none"><li>Industrial visits are increased</li></ul>
5. Improve the participation of students in Internships and to enhance the standard of the academic project to meet industry standard.	<ul style="list-style-type: none"><li>Motivated the students to undertake Real Time projects and encouraged the student to participate in Internships.</li></ul>
6. Student must be encouraged to do Master's and Research in premier institutions like NITs, IITs, IIMs etc.,	<ul style="list-style-type: none"><li>Direction is given to the student to prepare for GATE, CAT, GRE, etc and encouraged them to access NPTEL courses to strengthen the basic concepts.</li></ul>





Principal

PRINCIPAL  
CHIRALA ENGINEERING COLLEGE  
CHIRALA.



where professionalism speaks

# CHIRALA ENGINEERING COLLEGE

RAMAPURAM BEACH ROAD, CHIRALA, ANDHRA PRADESH - 523157.

Approved by AICTE, Affiliated to JNTUK, Kakinada.

(ISO 9001:2008 Certified Institution)

## Alumni Feedback Analysis and Action taken on curriculum for Academic Year: 2022 -2023

ALUMNI Feedback Analysis	Actions Taken
1. Need more focus on Industrial Training	<ul style="list-style-type: none"><li>• Industry Internship is included in the curriculum.</li></ul>
2. Need to add concepts related to current industry requirements.	<ul style="list-style-type: none"><li>• Current industry required subjects are chosen from the professional electives and open electives.</li></ul>
3. Current state of knowledge in computers to be imparted.	<ul style="list-style-type: none"><li>• Students are permitted to undergo industry internships.</li></ul>
4. It would be nice if interdisciplinary courses are added to the existing courses.	<ul style="list-style-type: none"><li>• Open elective courses are included to the curriculum.</li></ul>
5. Regular and periodic visits to industries would give a better picture of the text book knowledge.	<ul style="list-style-type: none"><li>• Industrial visits increased</li></ul>



  
Principal

PRINCIPAL  
CHIRALA ENGINEERING COLLEGE  
CHIRALA.