



CHIRALA ENGINEERING COLLEGE

RAMAPURAM BEACH ROAD, CHIRALA, ANDHRA PRADESH – 523157.

Approved by AICTE, Affiliated to JNTUK, Kakinada.

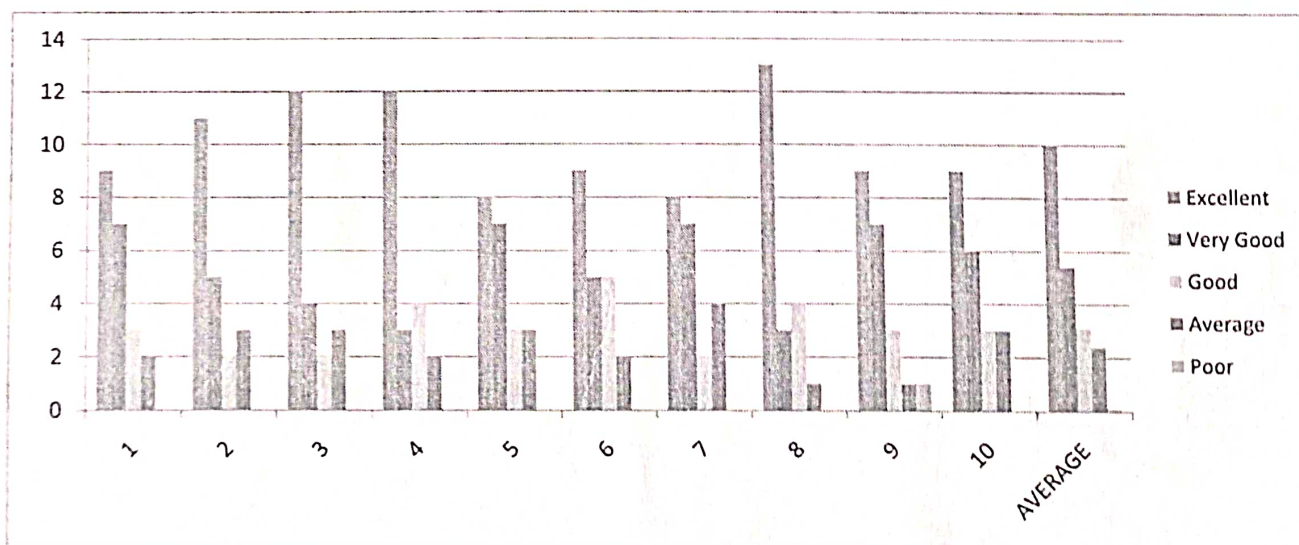
(ISO 9001:2008 Certified Institution)

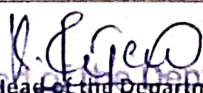
SUMMARY OF STUDENT'S FEEDBACK FORM ON CURRICULUM

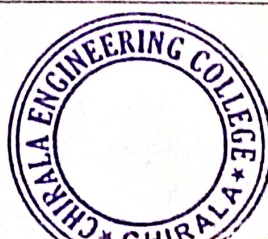
Program Year	Year-Semester	Branch	Total No. Of Samples
2021 - 2022	II-I	ECE	21

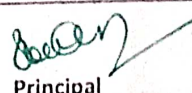
S.NO.	ATTRIBUTES/PARAMETERS	Excellent	Very Good	Good	Average	Poor
1	Rate the syllabus you studied in relation to the competencies required from the courses.	9	7	3	2	
2	The credit allotment for the course is appropriate.	11	5	2	3	
3	The depth of the course content is appropriate in relation to the intended course outcomes (COs).	12	4	2	3	
4	The syllabus's modules are properly ordered.	12	3	4	2	
5	The curriculum helped me increase my abilities to develop, analyze, and solve problems.	8	7	3	3	
6	Rate the evaluation scheme created for each course.	9	5	5	2	
7	The course materials are readily available.	8	7	2	4	
8	Calculate the proportion (%) of courses that have lab components.	13	3	4	1	
9	The laboratory trials improved conceptual knowledge and allowed for the connection of theory to practice (Experiential Learning).	9	7	3	1	1
10	The entire syllabus was completed in the class by the teacher	9	6	3	3	
AVERAGE		10	5.4	3.1	2.4	0.1

ANALYSIS on Student Feedback_ II B.Tech-I Semester AY 2021-2022




 Head of the Department
 Department of E.C.E
 CHIRALA ENGINEERING COLLEGE
 CHIRALA-523157




 Principal
PRINCIPAL
 CHIRALA ENGINEERING COLLEGE
 CHIRALA



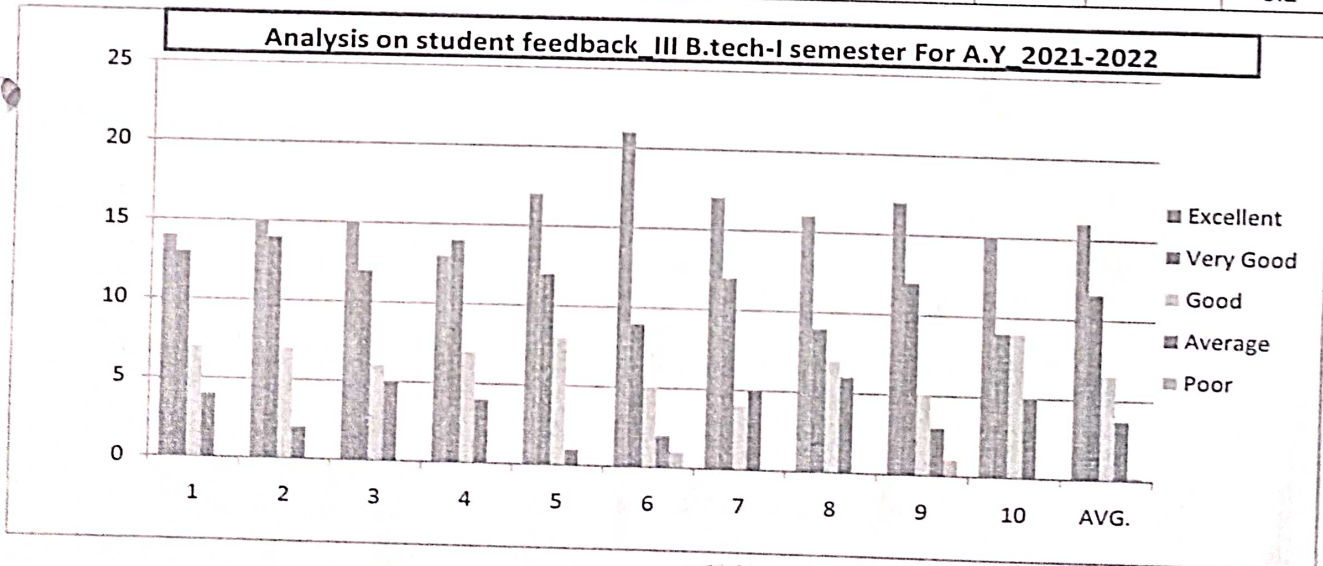
where professionalism speaks

CHIRALA ENGINEERING COLLEGE
 RAMAPURAM BEACH ROAD, CHIRALA, ANDHRA PRADESH - 523157.
 Approved by AICTE, Affiliated to JNTUK, Kakinada.
 (ISO 9001:2008 Certified Institution)

SUMMARY OF STUDENT'S FEEDBACK FORM ON CURRICULUM

Program Year 2021 - 2022	Year-Semester III-I	Branch ECE	Total No. Of Samples 38
-----------------------------	------------------------	---------------	----------------------------

S.NO.	ATTRIBUTES/PARAMETERS	Excellent	Very Good	Good	Average	Poor
1	Rate the syllabus you studied in relation to the competencies required from the courses.	14	13	7	4	
2	The credit allotment for the course is appropriate.	15	14	7	2	
3	The depth of the course content is appropriate in relation to the intended course outcomes (COs).	15	12	6	5	
4	The syllabus's modules are properly ordered.	13	14	7	4	
5	The curriculum helped me increase my abilities to develop, analyze, and solve problems.	17	12	8	1	
6	Rate the evaluation scheme created for each course.	21	9	5	2	1
7	The course materials are readily available.	17	12	4	5	
8	Calculate the proportion (%) of courses that have lab components.	16	9	7	6	
9	The laboratory trials improved conceptual knowledge and allowed for the connection of theory to practice (Experiential Learning).	17	12	5	3	1
10	The entire syllabus was completed in the class by the teacher	15	9	9	5	
AVERAGE		16	11.6	6.5	3.7	0.2



Head of the Department
 Department of E.C.E
 CHIRALA ENGINEERING COLLEGE
 CHIRALA-523157



Principal
 CHIRALA ENGINEERING COLLEGE
 CHIRALA



where professionalism speaks

CHIRALA ENGINEERING COLLEGE

RAMAPURAM BEACH ROAD, CHIRALA, ANDHRA PRADESH – 523157.

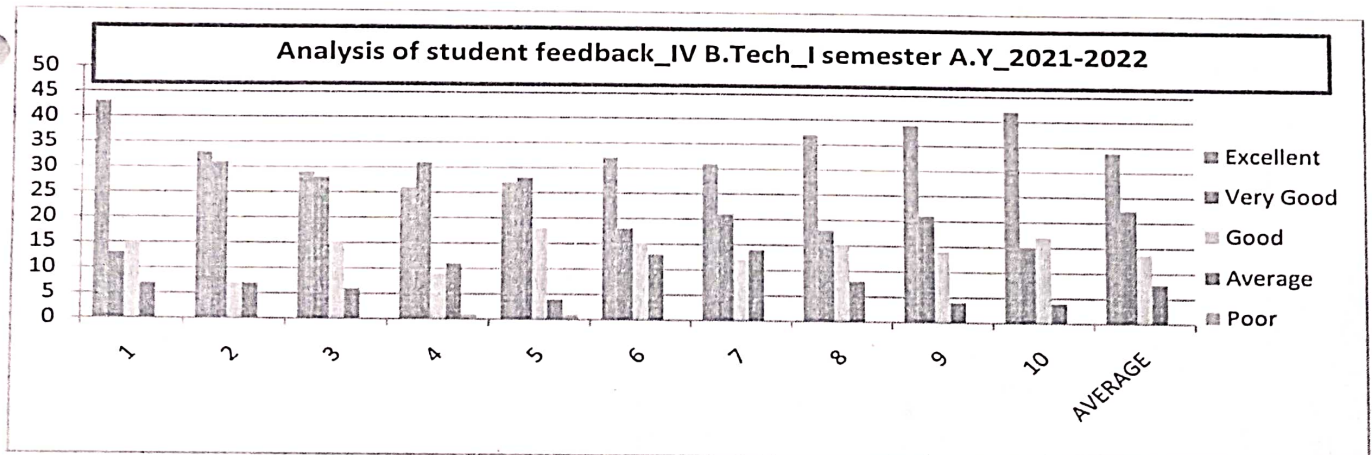
Approved by AICTE, Affiliated to JNTUK, Kakinada.

(ISO 9001:2008 Certified Institution)

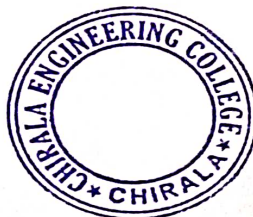
SUMMARY OF STUDENT'S FEEDBACK FORM ON CURRICULUM

Program Year	Year-Semester	Branch	Total No. Of Samples
2021 - 2022	IV-I	ECE	78

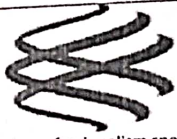
S.NO.	ATTRIBUTES/PARAMETERS	Excellent	Very Good	Good	Average	Poor
1	Rate the syllabus you studied in relation to the competencies required from the courses.	43	13	15	7	
2	The credit allotment for the course is appropriate.	33	31	7	7	
3	The depth of the course content is appropriate in relation to the intended course outcomes (COs).	29	28	15	6	
4	The syllabus's modules are properly ordered.	26	31	9	11	1
5	The curriculum helped me increase my abilities to develop, analyze, and solve problems.	27	28	18	4	1
6	Rate the evaluation scheme created for each course.	32	18	15	13	
7	The course materials are readily available.	31	21	12	14	
8	Calculate the proportion (%) of courses that have lab components.	37	18	15	8	
9	The laboratory trials improved conceptual knowledge and allowed for the connection of theory to practice (Experiential Learning).	39	21	14	4	
10	The entire syllabus was completed in the class by the teacher	42	15	17	4	
	AVERAGE	33.9	22.4	13.7	7.8	0.2



Head of the Department
Department of E.C.T
CHIRALA ENGINEERING COLLEGE
CHIRALA-523157



Principal
PRINCIPAL
CHIRALA ENGINEERING COLLEGE
CHIRALA



where professionalism speaks

CHIRALA ENGINEERING COLLEGE

RAMAPURAM BEACH ROAD, CHIRALA, ANDHRA PRADESH – 523157.

Approved by AICTE, Affiliated to JNTUK, Kakinada.

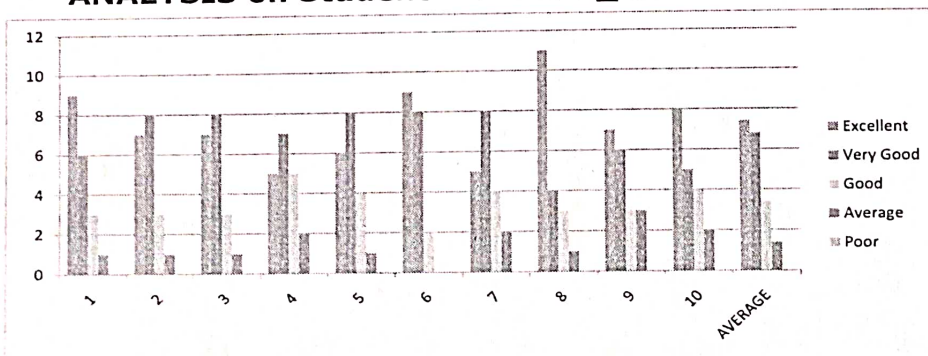
(ISO 9001:2008 Certified Institution)

SUMMARY OF STUDENT'S FEEDBACK FORM ON CURRICULUM

Program Year	Year-Semester	Branch	Total No. Of Samples
2021 - 2022	II-II	ECE	19

S.NO.	ATTRIBUTES/PARAMETERS	Excellent	Very Good	Good	Average	Poor
1	Rate the syllabus you studied in relation to the competencies required from the courses.	9	6	3	1	
2	The credit allotment for the course is appropriate.	7	8	3	1	
3	The depth of the course content is appropriate in relation to the intended course outcomes (COs).	7	8	3	1	
4	The syllabus's modules are properly ordered.	5	7	5	2	
5	The curriculum helped me increase my abilities to develop, analyze, and solve problems.	6	8	4	1	
6	Rate the evaluation scheme created for each course.	9	8	2		
7	The course materials are readily available.	5	8	4	2	
8	Calculate the proportion (%) of courses that have lab components.	11	4	3	1	
9	The laboratory trials improved conceptual knowledge and allowed for the connection of theory to practice (Experiential Learning).	7	6	3	3	
10	The entire syllabus was completed in the class by the teacher	8	5	4	2	
AVERAGE		7.4	6.8	3.4	1.4	

ANALYSIS on Student Feedback_ II B.Tech-II Semester AY 2021-2022



Head of the Department
Head of the Department
Department of E.C.E
CHIRALA ENGINEERING COLLEGE
CHIRALA-523157



Principal
CHIRALA ENGINEERING COLLEGE
CHIRALA



where professionalism speaks

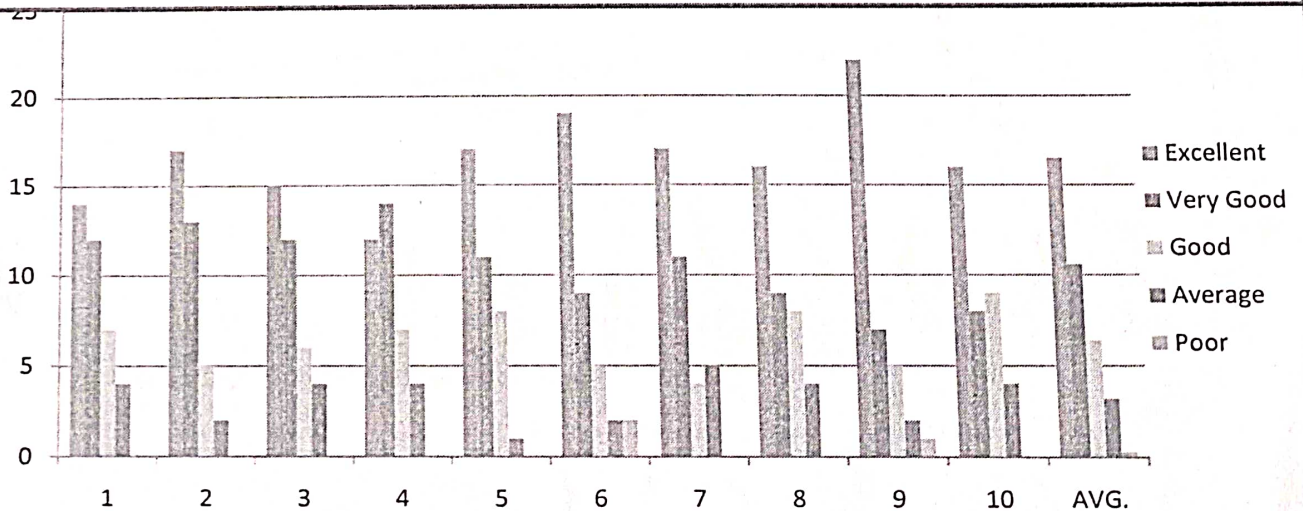
CHIRALA ENGINEERING COLLEGE
 RAMAPURAM BEACH ROAD, CHIRALA, ANDHRA PRADESH - 523157.
 Approved by AICTE, Affiliated to JNTUK, Kakinada.
 (ISO 9001:2008 Certified Institution)

SUMMARY OF STUDENT'S FEEDBACK FORM ON CURRICULUM

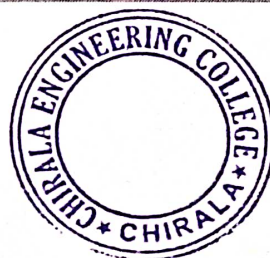
Program Year	Year-Semester	Branch	Total No. Of Samples
2021 - 2022	III-II	ECE	37

S.NO.	ATTRIBUTES/PARAMETERS	Excellent	Very Good	Good	Average	Poor
1	Rate the syllabus you studied in relation to the competencies required from the courses.	14	12	7	4	
2	The credit allotment for the course is appropriate.	17	13	5	2	
3	The depth of the course content is appropriate in relation to the intended course outcomes (COs).	15	12	6	4	
4	The syllabus's modules are properly ordered.	12	14	7	4	
5	The curriculum helped me increase my abilities to develop, analyze, and solve problems.	17	11	8	1	
6	Rate the evaluation scheme created for each course.	19	9	5	2	2
7	The course materials are readily available.	17	11	4	5	
8	Calculate the proportion (%) of courses that have lab components.	16	9	8	4	
9	The laboratory trials improved conceptual knowledge and allowed for the connection of theory to practice (Experiential Learning).	22	7	5	2	1
10	The entire syllabus was completed in the class by the teacher	16	8	9	4	
	AVERAGE	16.5	10.6	6.4	3.2	0.3

Analysis on student feedback_III B.Tech-II Semester For A.Y_2021-2022



Head of the Department
 Department of E.C.E
 CHIRALA ENGINEERING COLLEGE
 CHIRALA-523157



Principal
 PRINCIPAL
 CHIRALA ENGINEERING COLLEGE
 CHIRALA



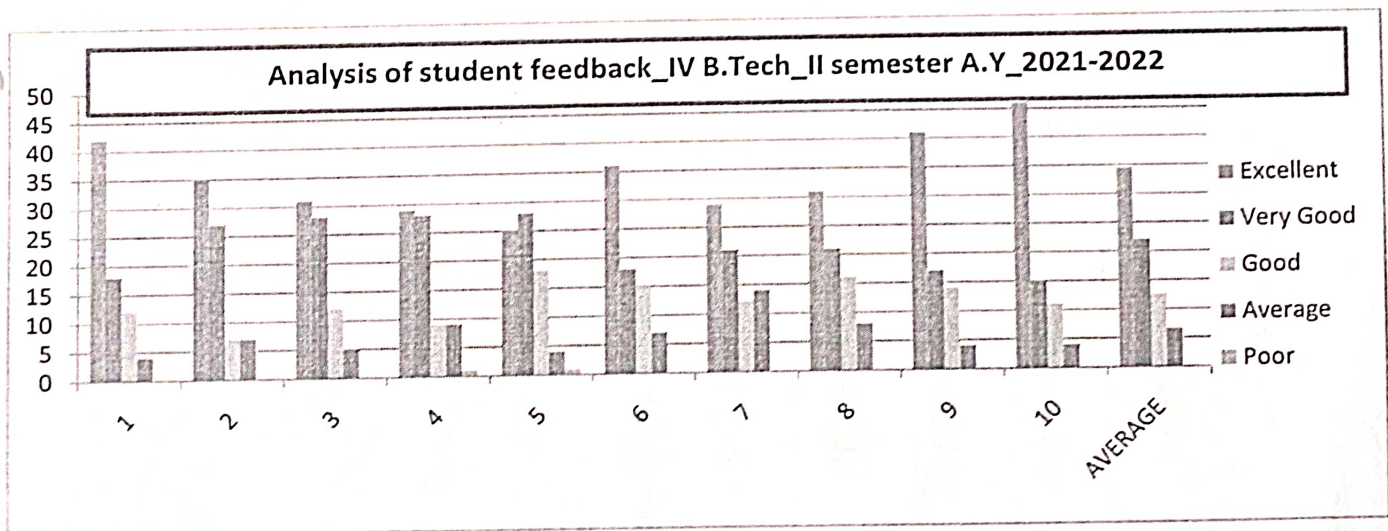
where professionalism speaks

CHIRALA ENGINEERING COLLEGE
 RAMAPURAM BEACH ROAD, CHIRALA, ANDHRA PRADESH - 523157.
 Approved by AICTE, Affiliated to JNTUK, Kakinada.
 (ISO 9001:2008 Certified Institution)

SUMMARY OF STUDENT'S FEEDBACK FORM ON CURRICULUM

Program Year	Year-Semester	Branch	Total No. Of Samples
2021 - 2022	IV-II	ECE	76

S.NO.	ATTRIBUTES/PARAMETERS	Excellent	Very Good	Good	Average	Poor
1	Rate the syllabus you studied in relation to the competencies required from the courses.	42	18	12	4	
2	The credit allotment for the course is appropriate.	35	27	7	7	
3	The depth of the course content is appropriate in relation to the intended course outcomes (COs).	31	28	12	5	
4	The syllabus's modules are properly ordered.	29	28	9	9	1
5	The curriculum helped me increase my abilities to develop, analyze, and solve problems.	25	28	18	4	1
6	Rate the evaluation scheme created for each course.	36	18	15	7	
7	The course materials are readily available.	29	21	12	14	
8	Calculate the proportion (%) of courses that have lab components.	31	21	16	8	
9	The laboratory trials improved conceptual knowledge and allowed for the connection of theory to practice (Experiential Learning).	41	17	14	4	
10	The entire syllabus was completed in the class by the teacher	46	15	11	4	
	AVERAGE	34.5	22.1	12.6	6.6	0.2



[Signature]
 Head of the Department
 Department of E.C.E
 CHIRALA ENGINEERING COLLEGE
 CHIRALA-523157



[Signature]
 Principal
 PRINCIPAL
 CHIRALA ENGINEERING COLLEGE
 CHIRALA



CHIRALA ENGINEERING COLLEGE

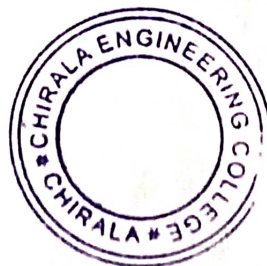
RAMAPURAM BEACH ROAD, CHIRALA, ANDHRA PRADESH - 523157.

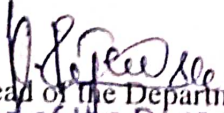
Approved by AICTE, Affiliated to JNTUK, Kakinada.

(ISO 9001:2008 Certified Institution)

Department of Electronics and Communication Engineering Student Feedback Analysis and Action taken on curriculum For Academic Year: 2021 -2022

Student Feedback Analysis	Actions Taken
<p>1. 88 % of the students agree that the laboratory experiments enhanced the understanding of the concepts and enabled to relate theory to practice (Experiential Learning)</p> <p>2. 95% were happy with credits assigned to the course. 91% agree that the depth of the course content is adequate in relation to the expected course outcomes (COs).</p> <p>3. Feedback concluded that the units in the syllabus are properly sequenced from the majority view. 93% of the students agree that the syllabus enables students to improve their ability to formulate, analyze and solve problems.</p> <p>4. Relevance of electives to the specialization chosen. 94% rate the electives offered matches with technological advancements. Majority of the students are happy with the evaluation scheme designed for each of the course. The course material is adequately available.</p> <p>5. Use of digital boards for explanation rather than pdf Important questions to be discussed topic wise</p>	<ul style="list-style-type: none">• Extra Lab Experiments or Programs related to syllabus are encouraged to add in the labs.• All Staff makes sure that all the COs and POs are fulfilled.• Instructed to teach content beyond syllabus such that flavor of the subject is inculcated to the minds of students.• Electives which are job oriented and high demand course was chosen in the benefit of students.• Usage of PPTs, Animations and Video Lectures were made mandatory to be taught in order to increase visualization of concept to the students.




Head of the Department
Head of the Department
Department of E.C.E
CHIRALA ENGINEERING COLLEGE
CHIRALA-523157


Principal
PRINCIPAL
CHIRALA ENGINEERING COLLEGE
CHIRALA.