



where professionalism speaks

CHIRALA ENGINEERING COLLEGE

RAMAPURAM BEACH ROAD, CHIRALA, Andhra Pradesh - 523157.

Approved by AICTE, Affiliated to JNTUK, Kakinada.

(ISO 9001:2008 Certified Institution)

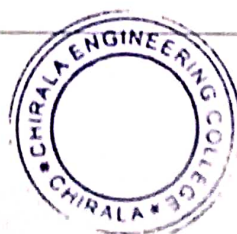
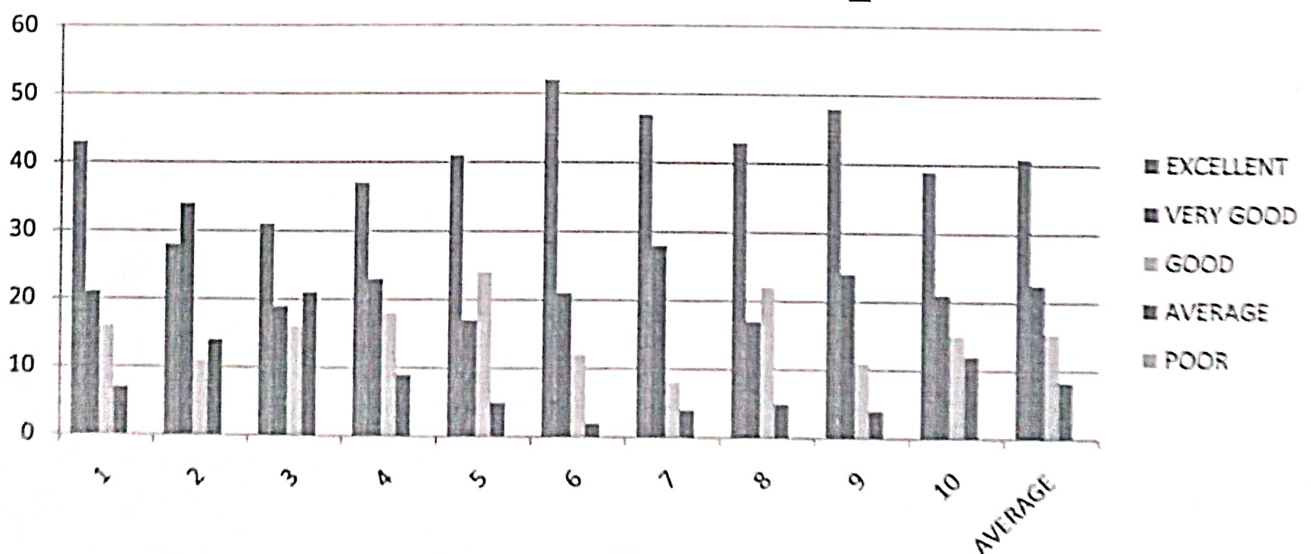
SUMMARY of ALUMNI FEEDBACK ON CURRICULUM (A.Y-2022-2023)

This feedback on Curriculum, Teaching, Learning and Evaluation is intended to collect information to obtain alumni input on the quality of education they received and the level of preparation they had at University. The purpose of this survey is to assess the quality of the academic program. We seek your help in completing this survey

*Rating score: Excellent (5), Very Good(4), Good(3), Average (2), Below Average(1)

| S No | Questionnaire | 5 | 4 | 3 | 2 | 1 |
|------|---|------|------|------|-----|---|
| 1. | How do you rate the appropriateness of curriculum and syllabus content for your placement/higher education? | 43 | 21 | 16 | 7 | |
| 2. | How do you rate co-curricular activities arranged during your study period? | 28 | 34 | 11 | 14 | |
| 3. | How do you rate the availability of relevant reading materials and digital resources in the Library? | 31 | 19 | 16 | 21 | |
| 4. | How do you rate the usefulness of institute-industry tie ups? | 37 | 23 | 18 | 9 | |
| 5. | How do you rate experiential learning (hands-on) of the courses? | 41 | 17 | 24 | 5 | |
| 6. | How do you rate the transparency of the academic processes of the institute? | 52 | 21 | 12 | 2 | |
| 7. | How do you rate the academic initiatives undertaken for the benefit of students? | 47 | 28 | 8 | 4 | |
| 8. | How do you rate the improvement of your inter and intra personal skills during your study period? | 43 | 17 | 22 | 5 | |
| 9. | How do you rate the training and placement support in the curriculum? | 48 | 24 | 11 | 4 | |
| 10. | How do you rate the leaning ambience of the college? | 39 | 21 | 15 | 12 | |
| | AVERAGE | 40.9 | 22.5 | 15.3 | 8.3 | 0 |

SUMMARY of ALUMNI FEEDBACK on CURRICULUM _AY 2022 - 2023



Principal
PRINCIPAL
 CHIRALA ENGINEERING COLLEGE
 CHIRALA.



where professionalism speaks

CHIRALA ENGINEERING COLLEGE

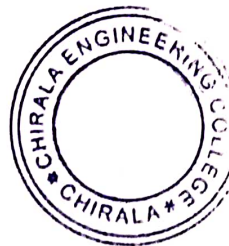
RAMAPURAM BEACH ROAD, CHIRALA, ANDHRA PRADESH - 523157.

Approved by AICTE, Affiliated to JNTUK, Kakinada.

(ISO 9001:2008 Certified Institution)

Alumni Feedback Analysis and Action taken on curriculum for Academic Year: 2022 -2023

| ALUMNI Feedback Analysis | Actions Taken |
|--|---|
| 1. Need more focus on Industrial Training | <ul style="list-style-type: none">• Industry Internship is included in the curriculum. |
| 2. Need to add concepts related to current industry requirements. | <ul style="list-style-type: none">• Current industry required subjects are chosen from the professional electives and open electives. |
| 3. Current state of knowledge in computers to be imparted. | <ul style="list-style-type: none">• Students are permitted to undergo industry internships. |
| 4. It would be nice if interdisciplinary courses are added to the existing courses. | <ul style="list-style-type: none">• Open elective courses are included to the curriculum. |
| 5. Regular and periodic visits to industries would give a better picture of the text book knowledge. | <ul style="list-style-type: none">• Industrial visits increased |




Principal

PRINCIPAL
CHIRALA ENGINEERING COLLEGE
CHIRALA.