



where professionalism speaks

CHIRALA ENGINEERING COLLEGE

RAMAPURAM BEACH ROAD, CHIRALA, ANDHRA PRADESH - 523157.

Approved by AICTE, Affiliated to JNTUK, Kakinada.

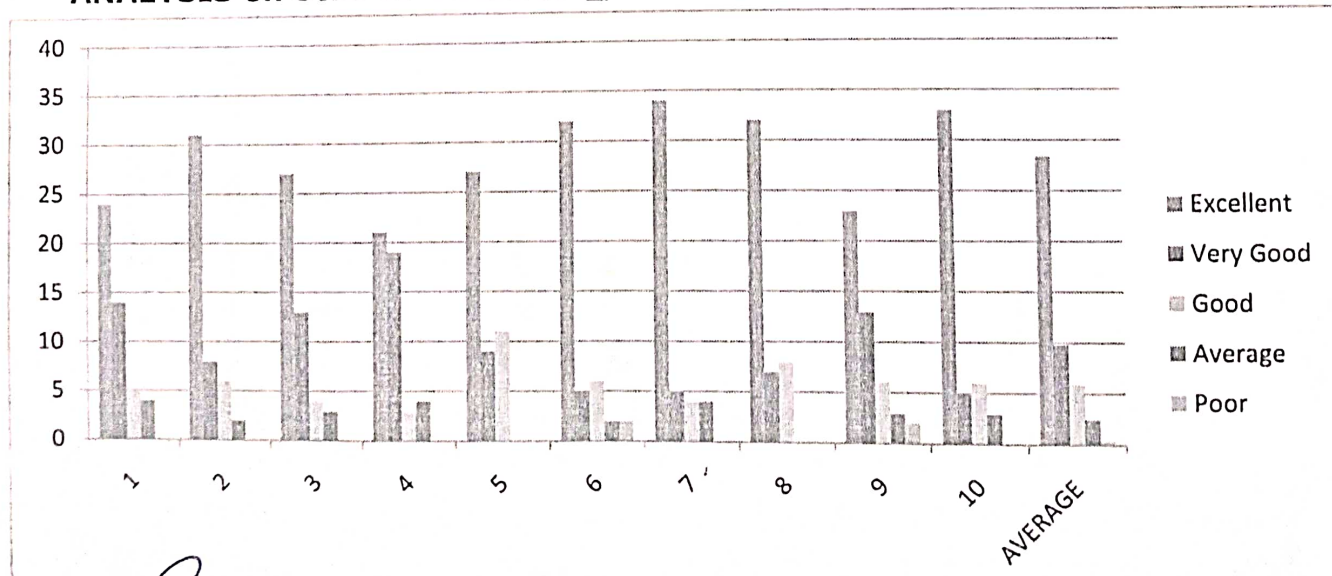
(ISO 9001:2008 Certified Institution)


SUMMARY OF STUDENT'S FEEDBACK FORM ON CURRICULUM (A.Y-2022-2023)

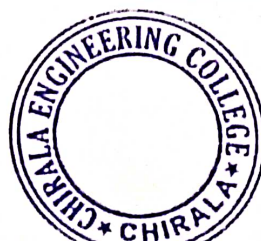
Program Year 2022 - 2023	Year-Semester II-I	Branch ECE	Total No. Of Samples 47
-----------------------------	-----------------------	---------------	----------------------------

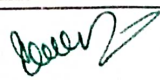
S.NO.	ATTRIBUTES/PARAMETERS	Excellent	Very Good	Good	Average	Poor
1	Rate the syllabus you studied in relation to the competencies required from the courses.	24	14	5	4	
2	The credit allotment for the course is appropriate.	31	8	6	2	
3	The depth of the course content is appropriate in relation to the intended course outcomes (COs).	27	13	4	3	
4	The syllabus's modules are properly ordered.	21	19	3	4	
5	The curriculum helped me increase my abilities to develop, analyze, and solve problems.	27	9	11		
6	Rate the evaluation scheme created for each course.	32	5	6	2	2
7	The course materials are readily available.	34	5	4	4	
8	Calculate the proportion (%) of courses that have lab components.	32	7	8		
9	The laboratory trials improved conceptual knowledge and allowed for the connection of theory to practice (Experiential Learning).	23	13	6	3	2
10	The entire syllabus was completed in the class by the teacher	33	5	6	3	
	AVERAGE	28.4	9.8	5.9	2.5	0.4

ANALYSIS on Student Feedback_ II B.Tech-I Semester AY 2022-2023




 Head of the Department
 Department of E.C
 CHIRALA ENGINEERING COLLEGE
 CHIRALA-523157




 Principal
 PRINCIPAL
 CHIRALA ENGINEERING COLLEGE,
 CHIRALA



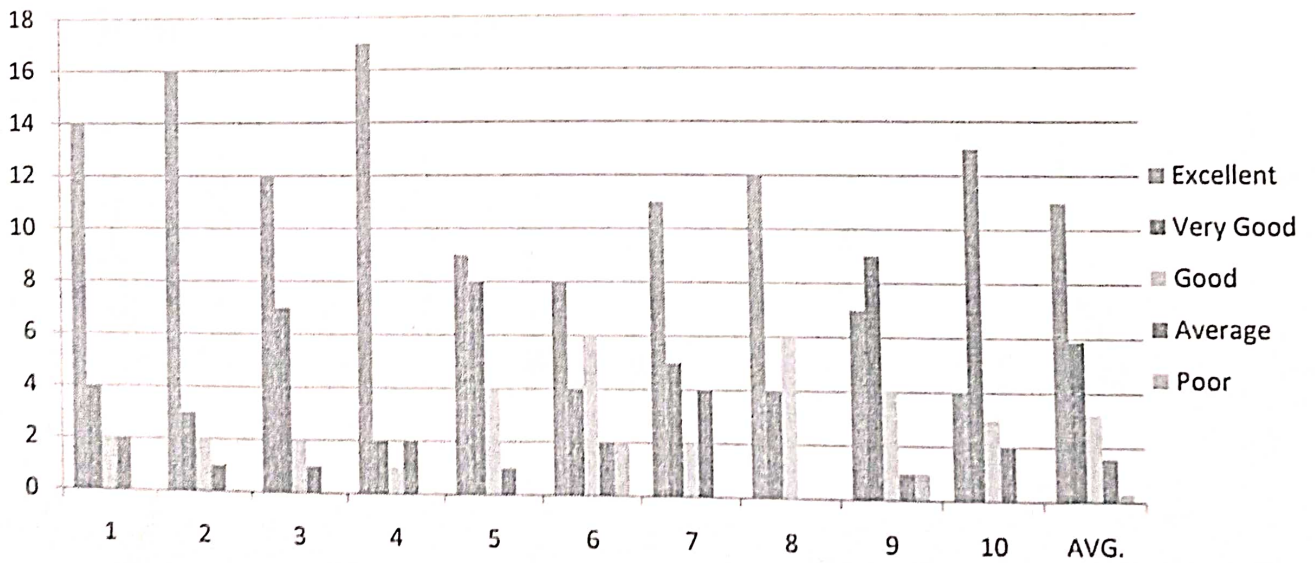
where professionalism speaks

CHIRALA ENGINEERING COLLEGE
 RAMAPURAM BEACH ROAD, CHIRALA, ANDHRA PRADESH - 523157.
 Approved by AICTE, Affiliated to JNTUK, Kakinada.
 (ISO 9001:2008 Certified Institution)

SUMMARY OF STUDENT'S FEEDBACK FORM ON CURRICULUM (A.Y-2022-2023)

Program Year.	Year-Semester	Branch	Total No. Of Samples			
2022 - 2023	III-I	ECE	22			
S.NO.	ATTRIBUTES/PARAMETERS	Excellent	Very Good	Good	Average	Poor
1	Rate the syllabus you studied in relation to the competencies required from the courses.	14	4	2	2	
2	The credit allotment for the course is appropriate.	16	3	2	1	
3	The depth of the course content is appropriate in relation to the intended course outcomes (COs).	12	7	2	1	
4	The syllabus's modules are properly ordered.	17	2	1	2	
5	The curriculum helped me increase my abilities to develop, analyze, and solve problems.	9	8	4	1	
6	Rate the evaluation scheme created for each course.	8	4	6	2	2
7	The course materials are readily available.	11	5	2	4	
8	Calculate the proportion (%) of courses that have lab components.	12	4	6		
9	The laboratory trials improved conceptual knowledge and allowed for the connection of theory to practice (Experiential Learning).	7	9	4	1	1
10	The entire syllabus was completed in the class by the teacher	4	13	3	2	
AVERAGE		11	5.9	3.2	1.6	0.3

ANALYSIS on Student Feedback_ III B.Tech-I Semester AY 2022-2023



Head of the Department
 Department of E.C.I
 CHIRALA ENGINEERING COLLEGE
 CHIRALA-523157



Principal
 PRINCIPAL
 CHIRALA ENGINEERING COLLEGE
 CHIRALA

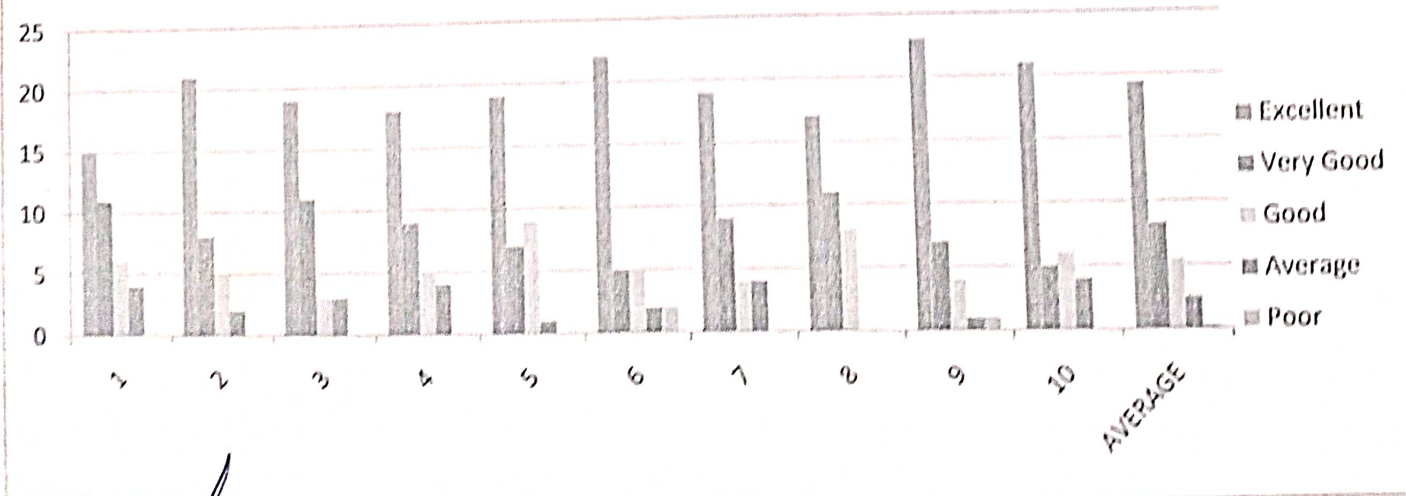


CHIRALA ENGINEERING COLLEGE
 RAMAPURAM BEACH ROAD, CHIRALA, ANDHRA PRADESH - 523157.
 Approved by AICTE, Affiliated to JNTUK, Kakinada.
 (ISO 9001:2008 Certified Institution)

SUMMARY OF STUDENT'S FEEDBACK FORM ON CURRICULUM (A.Y-2022-2023)

Program Year	Year-Semester	Branch	Total No. Of Samples				
2022 - 2023	IV-I	ECE	36				
S.NO.	ATTRIBUTES/PARAMETERS	Excellent	Very Good	Good	Average	Poor	
1	Rate the syllabus you studied in relation to the competencies required from the courses.	15	11	6	4		
2	The credit allotment for the course is appropriate.	21	8	5	2		
3	The depth of the course content is appropriate in relation to the intended course outcomes (COs).	19	11	3	3		
4	The syllabus's modules are properly ordered.	18	9	5	4		
5	The curriculum helped me increase my abilities to develop, analyze, and solve problems.	19	7	9	1		
6	Rate the evaluation scheme created for each course.	22	5	5	2	2	
7	The course materials are readily available.	19	9	4	4		
8	Calculate the proportion (%) of courses that have lab components.	17	11	8			
9	The laboratory trials improved conceptual knowledge and allowed for the connection of theory to practice (Experiential Learning).	23	7	4	1	1	
10	The entire syllabus was completed in the class by the teacher	21	5	6	4		
	AVERAGE	19.4	8.3	5.5	2.5	0.3	

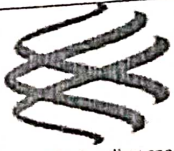
ANALYSIS of Student Feedback_IV B.Tech-I Semester AY 2022-2023



[Signature]
 Head of the Department
 Department of E.C.E.
 CHIRALA ENGINEERING COLLEGE
 CHIRALA-523157



[Signature]
 Principal
 CHIRALA ENGINEERING COLLEGE
 CHIRALA



where professionalism speaks

CHIRALA ENGINEERING COLLEGE

RAMAPURAM BEACH ROAD, CHIRALA, ANDHRA PRADESH - 523157.

Approved by AICTE, Affiliated to JNTUK, Kakinada.

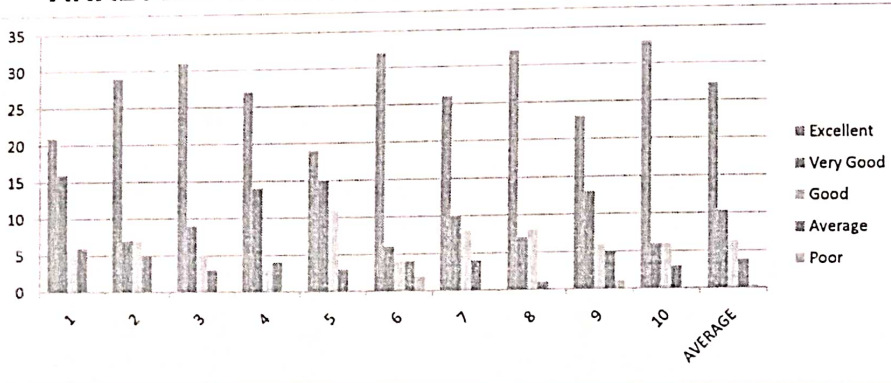
(ISO 9001:2008 Certified Institution)

SUMMARY OF STUDENT'S FEEDBACK FORM ON CURRICULUM

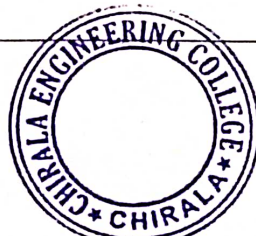
Program Year	Year-Semester	Branch	Total No. Of Samples
2022 - 2023	II-II	ECE	48

S.NO.	ATTRIBUTES/PARAMETERS	Excellent	Very Good	Good	Average	Poor
1	Rate the syllabus you studied in relation to the competencies required from the courses.	21	16	5	6	
2	The credit allotment for the course is appropriate.	29	7	7	5	
3	The depth of the course content is appropriate in relation to the intended course outcomes (COs).	31	9	5	3	
4	The syllabus's modules are properly ordered.	27	14	3	4	
5	The curriculum helped me increase my abilities to develop, analyze, and solve problems.	19	15	11	3	
6	Rate the evaluation scheme created for each course.	32	6	4	4	2
7	The course materials are readily available.	26	10	8	4	
8	Calculate the proportion (%) of courses that have lab components.	32	7	8	1	
9	The laboratory trials improved conceptual knowledge and allowed for the connection of theory to practice (Experiential Learning).	23	13	6	5	1
10	The entire syllabus was completed in the class by the teacher	33	6	6	3	
AVERAGE		27.3	10.3	6.3	3.8	0.3

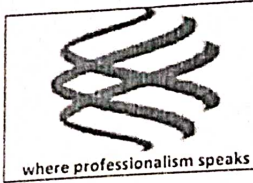
ANALYSIS on Student Feedback_ II B.Tech-II Semester AY 2022-2023



Head of the Department
 Head of the Department
 Department of E.C.E
 CHIRALA ENGINEERING COLLEGE
 CHIRALA-523157



Principal
 PRINCIPAL
 CHIRALA ENGINEERING COLLEGE
 CHIRALA



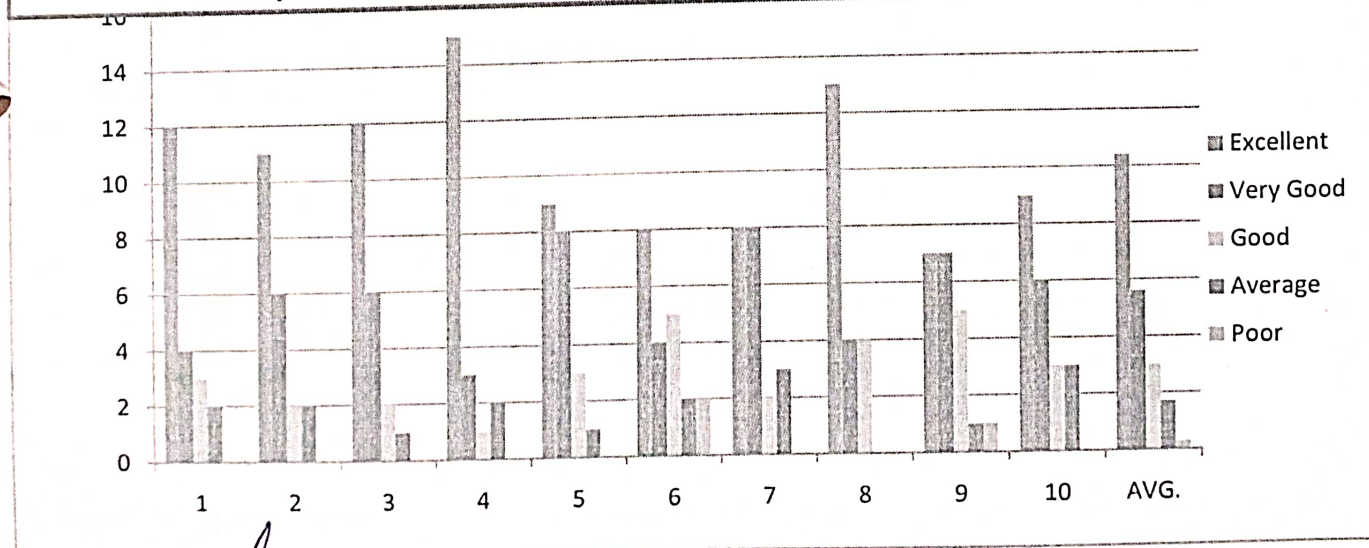
CHIRALA ENGINEERING COLLEGE
 RAMAPURAM BEACH ROAD, CHIRALA, ANDHRA PRADESH - 523157.
 Approved by AICTE, Affiliated to JNTUK, Kakinada.
 (ISO 9001:2008 Certified Institution)

SUMMARY OF STUDENT'S FEEDBACK FORM ON CURRICULUM

Program Year	Year-Semester	Branch	Total No. Of Samples
2022 - 2023	III-II	ECE	21

S.NO.	ATTRIBUTES/PARAMETERS	Excellent	Very Good	Good	Average	Poor
1	Rate the syllabus you studied in relation to the competencies required from the courses.	12	4	3	2	
2	The credit allotment for the course is appropriate.	11	6	2	2	
3	The depth of the course content is appropriate in relation to the intended course outcomes (COs).	12	6	2	1	
4	The syllabus's modules are properly ordered.	15	3	1	2	
5	The curriculum helped me increase my abilities to develop, analyze, and solve problems.	9	8	3	1	
6	Rate the evaluation scheme created for each course.	8	4	5	2	2
7	The course materials are readily available.	8	8	2	3	
8	Calculate the proportion (%) of courses that have lab components.	13	4	4		
9	The laboratory trials improved conceptual knowledge and allowed for the connection of theory to practice (Experiential Learning).	7	7	5	1	1
10	The entire syllabus was completed in the class by the teacher	9	6	3	3	
	AVERAGE	10.4	5.6	3	1.7	0.3

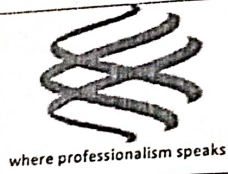
Analysis on student feedback_III B.Tech-II Semester For A.Y_2022-2023



[Signature]
 Head of the Department
 Department of E.C.E
 CHIRALA ENGINEERING COLLEGE
 CHIRALA-523157



[Signature]
 Principal
 CHIRALA ENGINEERING COLLEGE
 CHIRALA

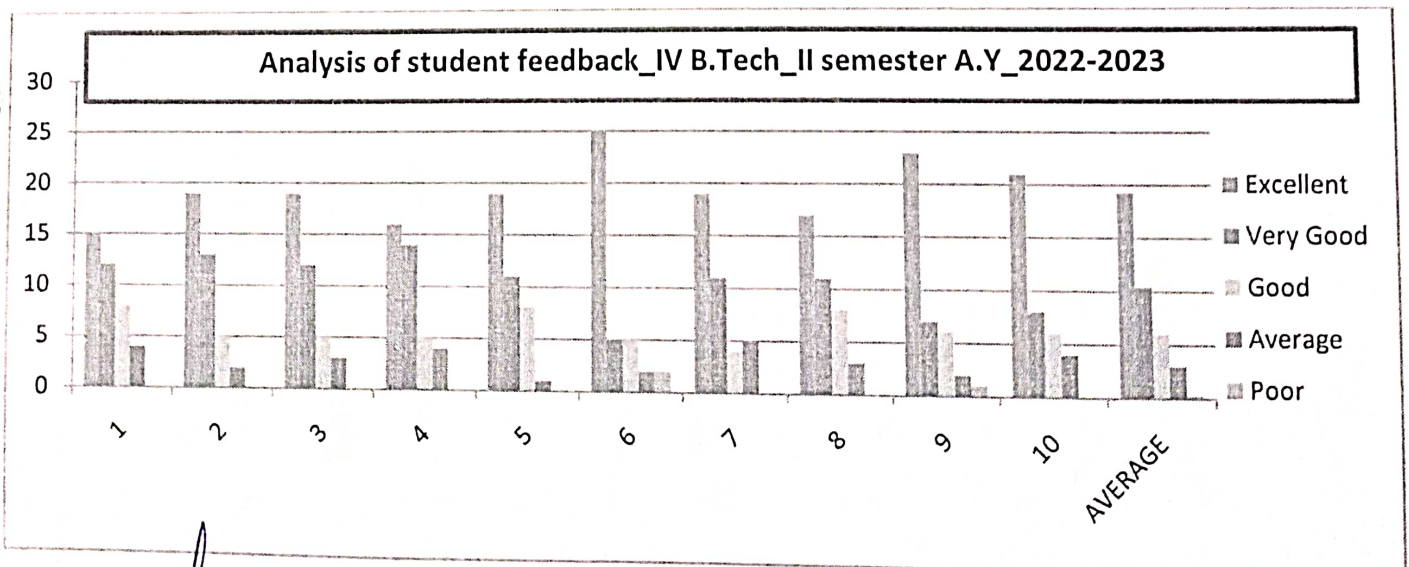


CHIRALA ENGINEERING COLLEGE
 RAMAPURAM BEACH ROAD, CHIRALA, ANDHRA PRADESH – 523157.
 Approved by AICTE, Affiliated to JNTUK, Kakinada.
 (ISO 9001:2008 Certified Institution)

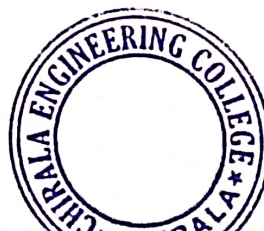
SUMMARY OF STUDENT'S FEEDBACK FORM ON CURRICULUM

Program Year	Year-Semester	Branch	Total No. Of Samples			
2022 - 2023	IV-II	ECE	39			

S.NO.	ATTRIBUTES/PARAMETERS	Excellent	Very Good	Good	Average	Poor
1	Rate the syllabus you studied in relation to the competencies required from the courses.	15	12	8	4	
2	The credit allotment for the course is appropriate.	19	13	5	2	
3	The depth of the course content is appropriate in relation to the intended course outcomes (COs).	19	12	5	3	
4	The syllabus's modules are properly ordered.	16	14	5	4	
5	The curriculum helped me increase my abilities to develop, analyze, and solve problems.	19	11	8	1	
6	Rate the evaluation scheme created for each course.	25	5	5	2	2
7	The course materials are readily available.	19	11	4	5	
8	Calculate the proportion (%) of courses that have lab components.	17	11	8	3	
9	The laboratory trials improved conceptual knowledge and allowed for the connection of theory to practice (Experiential Learning).	23	7	6	2	1
10	The entire syllabus was completed in the class by the teacher	21	8	6	4	
	AVERAGE	19.3	10.4	6	3	0.3



[Signature]
 Head of the Department
 Department of E.C.E
 CHIRALA ENGINEERING COLLEGE
 CHIRALA-523157



[Signature]
 Principal
 CHIRALA ENGINEERING COLLEGE
 CHIRALA




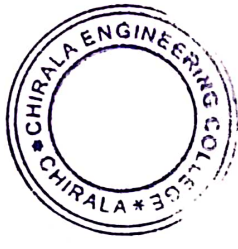
CHIRALA ENGINEERING COLLEGE
RAMAPURAM BEACH ROAD, CHIRALA, ANDHRA PRADESH – 523157.
Approved by AICTE, Affiliated to JNTUK, Kakinada.
(ISO 9001:2008 Certified Institution)

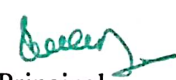
Department of Electronics and Communication Engineering

**Student Feedback Analysis and Action taken on curriculum
For The Academic Year: 2022 -2023**

Student Feedback Analysis	Actions Taken
<ol style="list-style-type: none">95% were happy with credits assigned to the course. 91% agree that the depth of the course content is adequate in relation to the expected course outcomes (COs).Feedback concluded that the units in the syllabus are properly sequenced from the majority view. 93% of the students agree that the syllabus enables students to improve their ability to formulate, analyze and solve problems.Relevance of electives to the specialization chosen. 94% rate the electives offered matches with technological advancements. Majority of the students are happy with the evaluation scheme designed for each of the course. The course material is adequately available.88 % of the students agree that the laboratory experiments enhanced the understanding of the concepts and enabled to relate theory to practice (Experiential Learning)Use of digital boards for explanation rather than pdf Important questions to be discussed topic wise	<ul style="list-style-type: none">Subject materials provided for Module Wise, Question Bank, Video lecture links are shared.Students are encouraged to lead various Club activities for technical & non-technical to enhance their Leadership qualities and improve communication skills.Animated videos, different teaching tools (Jam board, digital board) and simulations are used.Solutions and scheme of evaluation for previous year University question papers are shared and discussed.Additional Laboratory sessions for lab experiments are conducted to enhance their practical knowledge.T&P cell is arranging training and helping the students to file a patent.Students are encouraged and guided to write and publish a research paper of their project work.


Head of the Department
Head of the Department
Department of E.C.E
CHIRALA ENGINEERING COLLEGE
CHIRALA-523157




Principal
PRINCIPAL
CHIRALA ENGINEERING COLLEGE
CHIRALA.